

SIMPLE WESTERN CERTIFIED ANTIBODY DATASHEET

[View Antibody Link](#)

1



Figure 1: Cathepsin X/Z/P Antibody [NBP2-38614] - Simple Western lane view shows a specific band for Cathepsin Z in 0.2 mg/ml of SW480 lysate(s). This experiment was performed under reducing conditions using the 12-230 kDa separation systems.

2

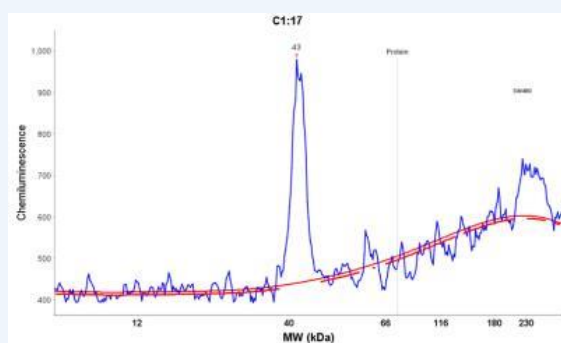


Figure 2: Cathepsin X/Z/P Antibody [NBP2-38614] - Electropherogram image of the corresponding Simple Western lane view. Cathepsin Z antibody was used at 1:10 dilution on SW480 lysate(s) respectively.

PROTEIN TARGET/ANTIBODY	
Protein Target	Cathepsin X/Z/P
Protein Isoform	Cathepsin X/Z/P Antibody
Antibody Type	Primary
Host Species/Clonality	Rabbit Polyclonal
ASSAY	
Sample Type	SW480 lysates
Sample Concentration	0.2 mg/ml
Antibody Concentration	1:10
Antibody Diluent	
Detection Mode	Chemiluminescence
Separation Type	Size
Matrix	12-230 kDa
Observed kDa	

PUBLICATIONS
None Listed

This antibody is validated for Gel-Free, Blot Free, Hands Free Simple Western Systems. To learn about Simple Western Systems, available Simple Western antibodies, or new antibody submissions visit the links below. For additional information, please contact support@proteinsimple.com.

[Simple Western Systems](#)

[Simple Western Antibody Database](#)

[Simple Western Antibody Submission](#)