

## SIMPLE WESTERN CERTIFIED ANTIBODY DATASHEET

[View Antibody Link](#)

1



Figure 1: CaMKII beta Antibody [NBP1-88212] - Simple Western lane view shows a specific band for CaMKII beta in 0.2 mg/ml of H. Motor Cortex lysate(s). This experiment was performed under reducing conditions using the 12-230 kDa separation systems.

2

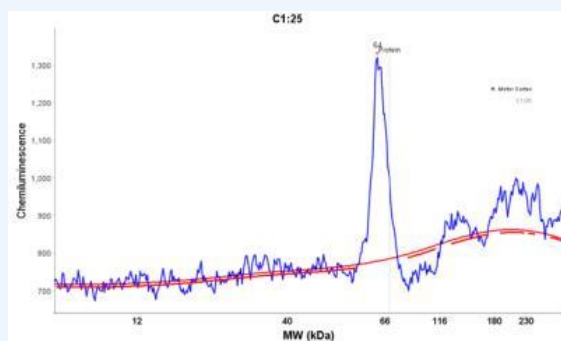


Figure 2: CaMKII beta Antibody [NBP1-88212] - Electropherogram image of the corresponding Simple Western lane view. CaMKII beta antibody was used at 1:5 dilution on H. Motor Cortex lysate(s) respectively.

PROTEIN TARGET/ANTIBODY	
Protein Target	CaMKII beta
Protein Isoform	CaMKII beta Antibody
Antibody Type	Primary
Host Species/Clonality	Rabbit Polyclonal
ASSAY	
Sample Type	H. Motor Cortex lysates
Sample Concentration	0.2 mg/ml
Antibody Concentration	1:5
Antibody Diluent	
Detection Mode	Chemiluminescence
Separation Type	Size
Matrix	12-230 kDa
Observed kDa	

PUBLICATIONS
None Listed

This antibody is validated for Gel-Free, Blot Free, Hands Free Simple Western Systems. To learn about Simple Western Systems, available Simple Western antibodies, or new antibody submissions visit the links below. For additional information, please contact [support@proteinsimple.com](mailto:support@proteinsimple.com).

[Simple Western Systems](#)

[Simple Western Antibody Database](#)

[Simple Western Antibody Submission](#)