

## SIMPLE WESTERN CERTIFIED ANTIBODY DATASHEET

[View  
Antibody Link](#)

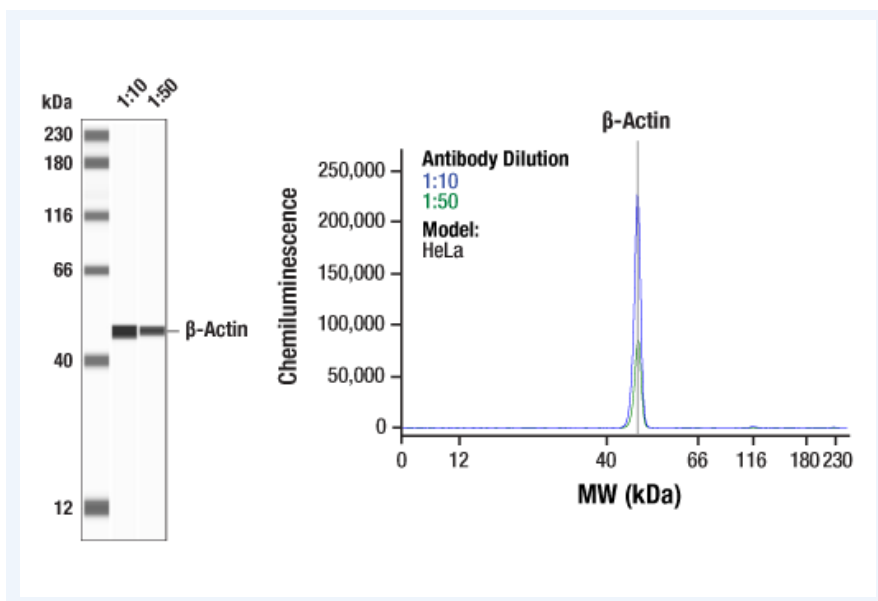


Figure: Simple Western™ analysis of lysates (0.1 mg/mL) from HeLa cells using β-Actin (13E5) Rabbit mAb #4970. The virtual lane view (left) shows the target band (as indicated) at 1:10 and 1:50 dilutions of primary antibody. The corresponding electropherogram view (right) plots chemiluminescence by molecular weight along the capillary at 1:10 (blue line) and 1:50 (green line) dilutions of primary antibody. This experiment was performed under reducing conditions on the Jess Simple Western instrument from ProteinSimple, a Bio-Techne brand, using the 12-230 kDa separation module.

PROTEIN TARGET/ANTIBODY	
Protein Target	β-Actin (13E5) Rabbit mAb
Protein Isoform	
Antibody Type	Primary
Host Species/Clonality	Rabbit Monoclonal
ASSAY	
Sample Type	HeLa
Sample Concentration	0.1 mg/ml
Recommended Antibody Concentration/Dilution	1:10-1:50
Antibody Diluent	Antibody Diluent 2
Detection Mode	Chemiluminescence
Separation Type	Size
Matrix	12 - 230 kDa
Observed kDa	48

This antibody is validated for Gel-Free, Blot Free, Hands Free Simple Western Systems. To learn about Simple Western Systems, available Simple Western antibodies, or new antibody submissions visit the links below. For additional information, please contact [support@proteinsimple.com](mailto:support@proteinsimple.com).

[Simple Western Systems](#)

[Simple Western Antibody Database](#)

[Simple Western Antibody Submission](#)