

SIMPLE WESTERN CERTIFIED ANTIBODY DATASHEET

[View Antibody Link](#)

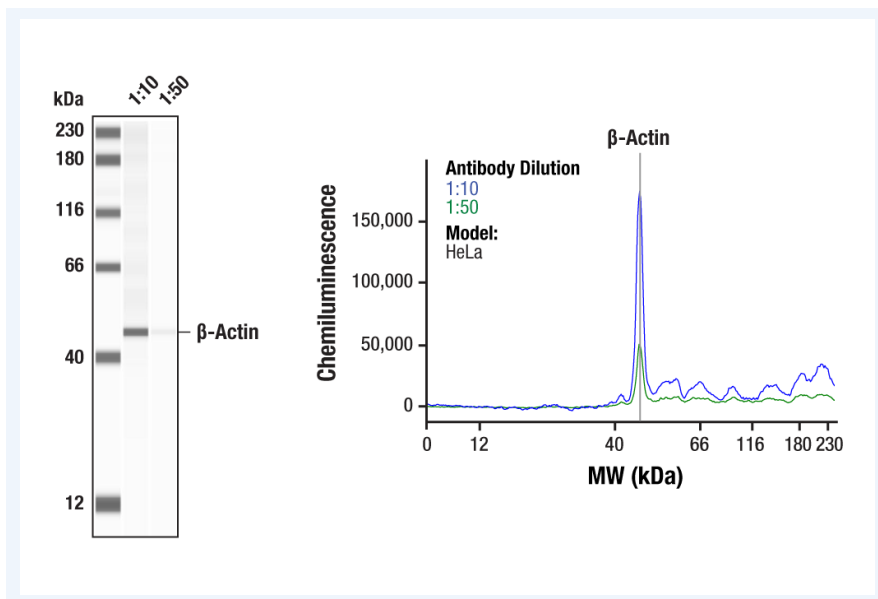


Figure: Simple Western™ analysis of lysates (1 mg/mL) from HeLa cells using β-Actin Antibody #4967. The virtual lane view (left) shows the target band (as indicated) at 1:10 and 1:50 dilutions of primary antibody. The corresponding electropherogram view (right) plots chemiluminescence by molecular weight along the capillary at 1:10 (blue line) and 1:50 (green line) dilutions of primary antibody. This experiment was performed under reducing conditions on the Jess Simple Western instrument from ProteinSimple, a Bio-Techne brand, using the 12-230 kDa separation module.

| PROTEIN TARGET/ANTIBODY | |
|---|--------------------|
| Protein Target | β-Actin Antibody |
| Protein Isoform | |
| Antibody Type | Primary |
| Host Species/Clonality | Rabbit Polyclonal |
| ASSAY | |
| Sample Type | HeLa |
| Sample Concentration | 1 mg/ml |
| Recommended Antibody Concentration/Dilution | 1:10-1:50 |
| Antibody Diluent | Antibody Diluent 2 |
| Detection Mode | Chemiluminescence |
| Separation Type | Size |
| Matrix | 12 - 230 kDa |
| Observed kDa | 48 |

This antibody is validated for Gel-Free, Blot Free, Hands Free Simple Western Systems. To learn about Simple Western Systems, available Simple Western antibodies, or new antibody submissions visit the links below. For additional information, please contact support@proteinsimple.com.

[Simple Western Systems](#)

[Simple Western Antibody Database](#)

[Simple Western Antibody Submission](#)