

SIMPLE WESTERN CERTIFIED ANTIBODY DATASHEET

[View Antibody Link](#)

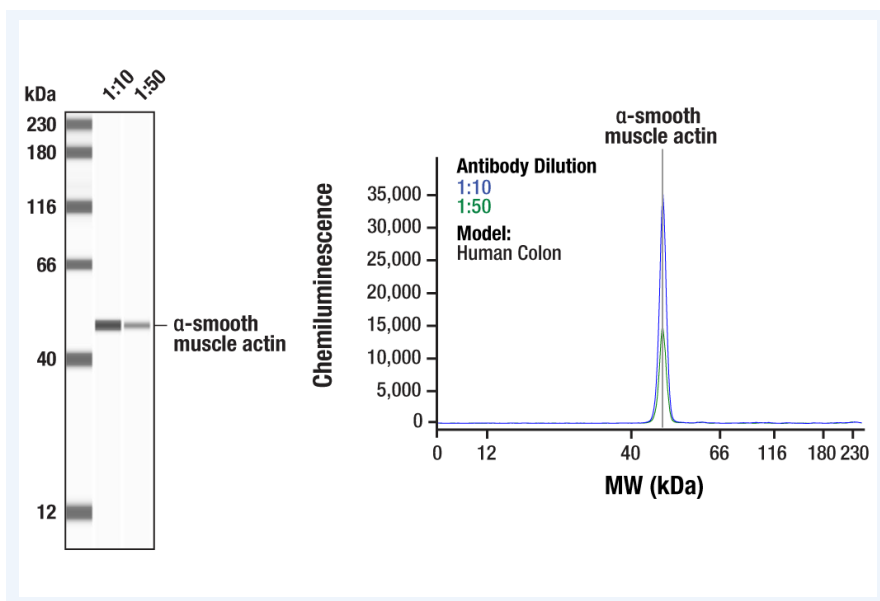


Figure: Simple Western™ analysis of extracts (1 mg/mL) from Human Colon tissue using α-Smooth Muscle Actin (D4K9N) XP® Rabbit mAb #19245. The virtual lane view (left) shows a single target band (as indicated) at 1:10 and 1:50 dilutions of primary antibody. The corresponding electropherogram view (right) plots chemiluminescence by molecular weight along the capillary at 1:10 (blue line) and 1:50 (green line) dilutions of primary antibody. This experiment was performed under reducing conditions on the Jess Simple Western instrument from ProteinSimple, a Bio-Techne brand, using the 12-230 kDa separation module.

PROTEIN TARGET/ANTIBODY	
Protein Target	a-Smooth Muscle Actin (D4K9N) XP® Rabbit mAb
Protein Isoform	
Antibody Type	Primary
Host Species/Clonality	Rabbit Monoclonal
ASSAY	
Sample Type	Human Colon
Sample Concentration	1 mg/ml
Recommended Antibody Concentration/Dilution	1:10-1:50
Antibody Diluent	Antibody Diluent 2
Detection Mode	Chemiluminescence
Separation Type	Size
Matrix	12 - 230 kDa
Observed kDa	49

This antibody is validated for Gel-Free, Blot Free, Hands Free Simple Western Systems. To learn about Simple Western Systems, available Simple Western antibodies, or new antibody submissions visit the links below. For additional information, please contact support@proteinsimple.com.

[Simple Western Systems](#)

[Simple Western Antibody Database](#)

[Simple Western Antibody Submission](#)