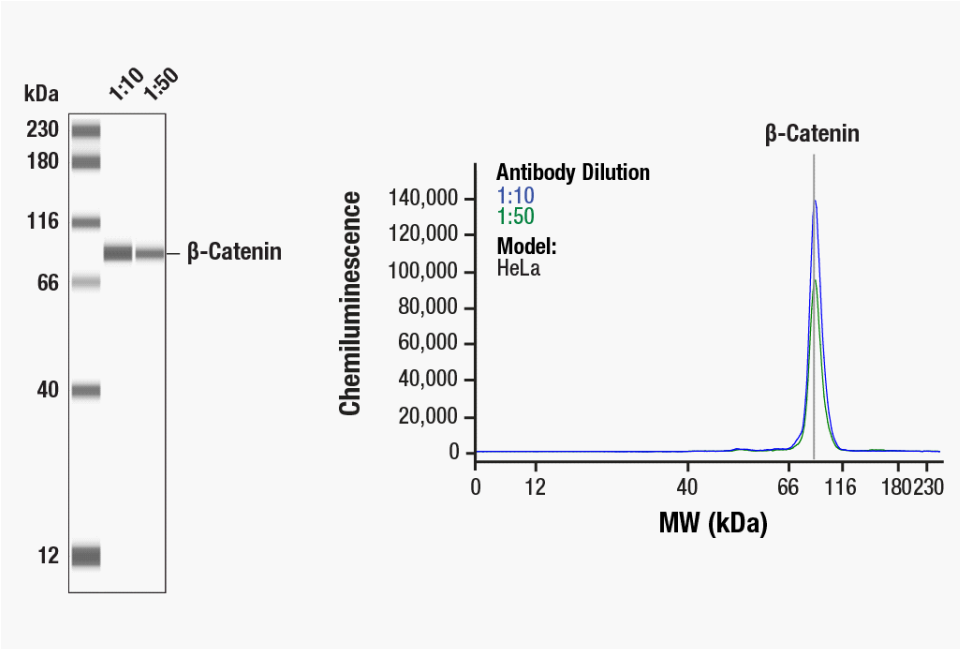


## SIMPLE WESTERN CERTIFIED ANTIBODY DATASHEET



Simple Western™ analysis of lysates (0.1 mg/mL) from HeLa cells using β-Catenin (D10A8) XP® Rabbit mAb #8480. The virtual lane view (left) shows the target band (as indicated) at 1:10 and 1:50 dilutions of primary antibody. The corresponding electropherogram view (right) plots chemiluminescence by molecular weight along the capillary at 1:10 (blue line) and 1:50 (green line) dilutions of primary antibody. This experiment was performed under reducing conditions on the Jess™ Simple Western instrument from ProteinSimple, a Bio-Techne brand, using the 12–230 kDa Separation Module.

Certified by Cell Signaling Technology

### Antibody

Antibody Name (Target)	β-Catenin (D10A8) XP® Rabbit mAb
Host Species	Rabbit
Clonality	Monoclonal
Antibody Type	Primary
Antibody Dilution	1:10–1:50 (recommended by CST)
Sample Concentration	0.1 mg/mL (recommended by CST)

### Assay

Assay Type	SW - Size
Matrix	12–230 kDa
Observed kDa	90
Sample Type	HeLa
Publications [3 total]	[1] Cancers (Basel). 2021 Jul 23;13(15):3714. [2] Biol Open. 2018 Jan 26;7(1):bio030874. [3] Oncotarget. 2017 Sep 28;8(70):114526-114539.

For additional information on this antibody: [View Antibody Link](#)

This antibody is certified for Gel-Free, Blot Free, Hands Free Simple Western Systems. To learn about Simple Western Systems, available Simple Western antibodies, or new antibody submissions visit the links below. For additional information, please contact

[support@proteinsimple.com](mailto:support@proteinsimple.com)

[Simple Western Systems](#)

[Simple Western Antibody Database](#)

[Simple Western Antibody Submission](#)