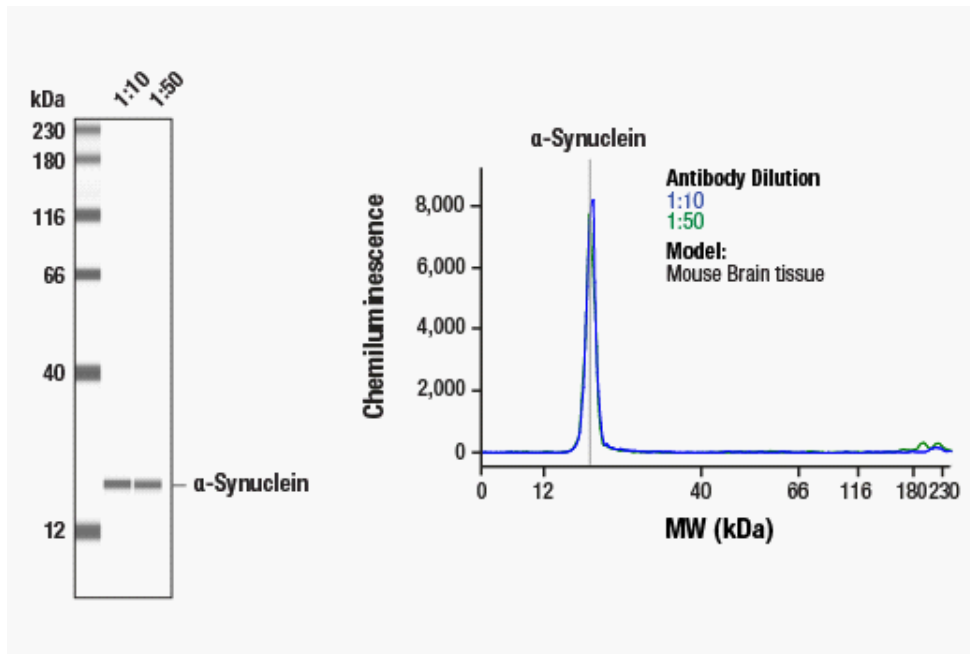


SIMPLE WESTERN CERTIFIED ANTIBODY DATASHEET



Simple Western™ analysis of extracts (1 mg/mL) from Mouse brain tissue using α-Synuclein (E4U2F) XP® Rabbit mAb #51510. The virtual lane view (left) shows a single target band (as indicated) at 1:10 and 1:50 dilutions of primary antibody. The corresponding electropherogram view (right) plots chemiluminescence by molecular weight along the capillary at 1:10 (blue line) and 1:50 (green line) dilutions of primary antibody. This experiment was performed under reducing conditions on the Jess™ Simple Western instrument from ProteinSimple, a Bio-Techne brand, using the 12–230 kDa Separation Module.

Certified by Cell Signaling Technology

Antibody

Antibody Name (Target)	α-Synuclein (E4U2F) XP® Rabbit mAb
Host Species	Rabbit
Clonality	Monoclonal
Antibody Type	Primary
Antibody Dilution	1:10–1:50 (recommended by CST)
Sample Concentration	1 mg/mL (recommended by CST)

Assay

Assay Type	SW - Size
Matrix	12–230 kDa
Observed kDa	20
Sample Type	Mouse Brain

For additional information on this antibody: [View Antibody Link](#)

This antibody is certified for Gel-Free, Blot Free, Hands Free Simple Western Systems. To learn about Simple Western Systems, available Simple Western antibodies, or new antibody submissions visit the links below. For additional information, please contact

support@proteinsimple.com

[Simple Western Systems](#)

[Simple Western Antibody Database](#)

[Simple Western Antibody Submission](#)