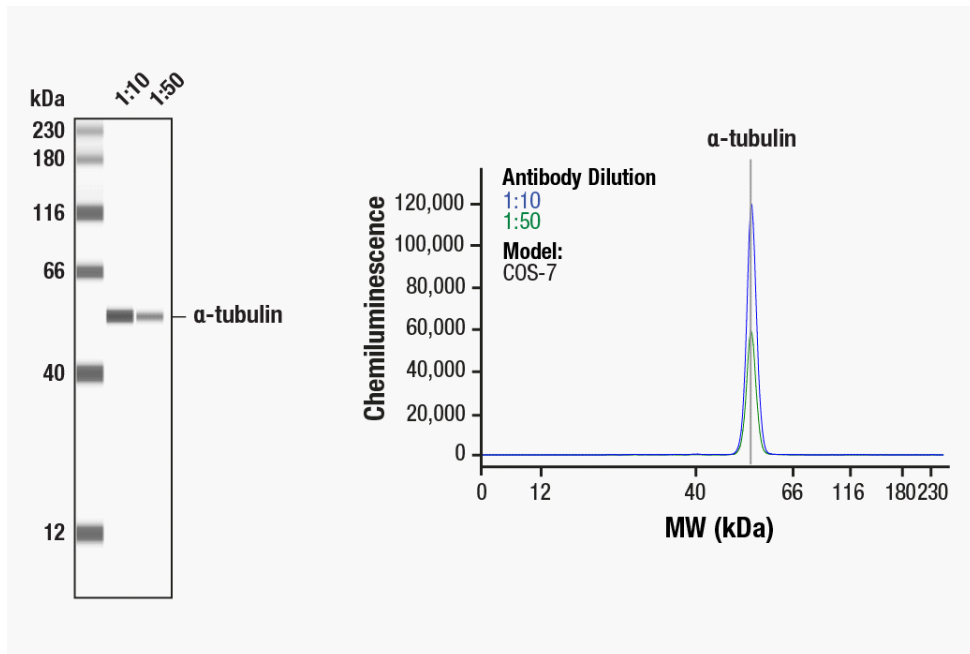


SIMPLE WESTERN CERTIFIED ANTIBODY DATASHEET



Simple Western™ analysis of lysates (0.1 mg/mL) from COS-7 cells using α-Tubulin (11H10) Rabbit mAb #2125. The virtual lane view (left) shows the target band (as indicated) at 1:10 and 1:50 dilutions of primary antibody. The corresponding electropherogram view (right) plots chemiluminescence by molecular weight along the capillary at 1:10 (blue line) and 1:50 (green line) dilutions of primary antibody. This experiment was performed under reducing conditions on the Jess™ Simple Western instrument from ProteinSimple, a Bio-Techne brand, using the 12–230 kDa Separation Module.

Certified by Cell Signaling Technology

Antibody

Antibody Name (Target)	α-Tubulin (11H10) Rabbit mAb #2125
Host Species	Rabbit
Clonality	Monoclonal
Antibody Type	Primary
Antibody Dilution	1:10–1:50 (recommended by CST)
Sample Concentration	0.1 mg/mL (recommended by CST)

Assay

Assay Type	SW - Size
Matrix	12–230 kDa
Observed kDa	55
Sample Type	COS-7
Publications [4 total]	[1] J Cell Sci. 2018 Feb 2;131(3):jcs202580. [2] Exp Neurol. 2019 Feb;312:20-32. [3] Cell Commun Signal. 2016 Dec 15;14(1):32. [4] PLoS One. 2015 Apr 7;10(4):e0123642.

For additional information on this antibody: [View Antibody Link](#)

This antibody is certified for Gel-Free, Blot Free, Hands Free Simple Western Systems. To learn about Simple Western Systems, available Simple Western antibodies, or new antibody submissions visit the links below. For additional information, please contact

support@proteinsimple.com

[Simple Western Systems](#)

[Simple Western Antibody Database](#)

[Simple Western Antibody Submission](#)