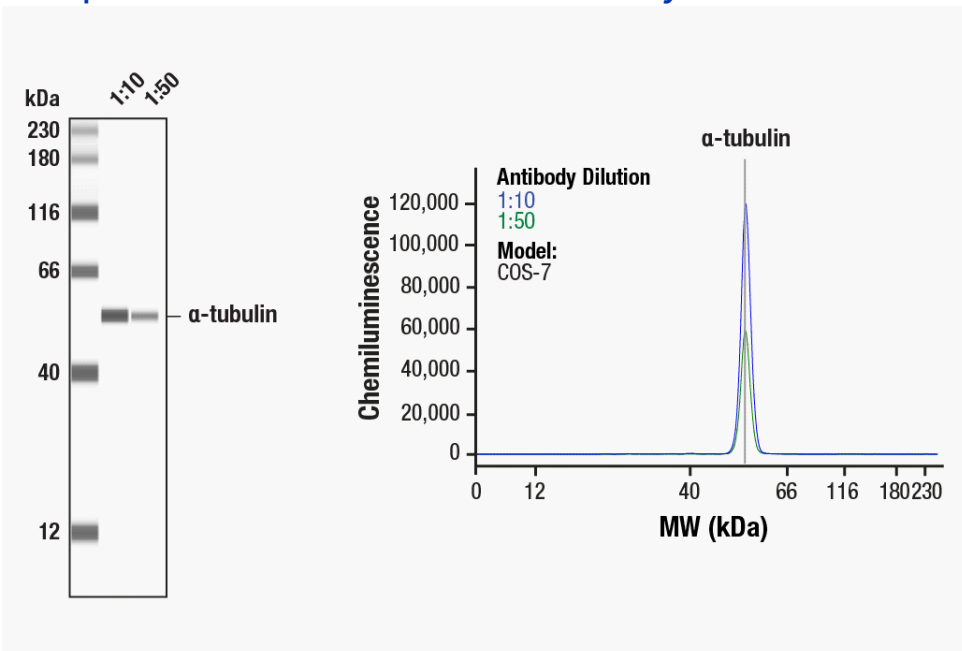


Simple Western Certified Antibody Datasheet



Simple Western™ analysis of lysates (0.1 mg/mL) from COS-7 cells using  $\alpha$ -Tubulin (11H10) Rabbit mAb #2125. The virtual lane view (left) shows the target band (as indicated) at 1:10 and 1:50 dilutions of primary antibody. The corresponding electropherogram view (right) plots chemiluminescence by molecular weight along the capillary at 1:10 (blue line) and 1:50 (green line) dilutions of primary antibody. This experiment was performed under reducing conditions on the Jess™ Simple Western instrument from ProteinSimple, a Bio-Techne brand, using the 12–230 kDa Separation Module.

Certified by Cell Signaling Technology

**Antibody**

|                      |  |
|----------------------|--|
| Name                 | $\alpha$ -Tubulin (11H10) Rabbit mAb #2125 |
| Host                 | Rabbit                                     |
| Clonality            | Monoclonal                                 |
| Type                 | Primary                                    |
| Dilution             | 1:10–1:50 (recommended by CST)             |
| Sample Concentration | 0.1 mg/mL (recommended by CST)             |

**Assay**

|                        |  |
|------------------------|--|
| Type                   | Size   |
| Matrix                 | 12–230 kDa   |
| Observed kDa           | 55   |
| Sample Type            | COS-7  |
| Publications (4 found) | J Cell Sci. 2018 Feb 2;131(3):jcs202580. // Exp Neurol. 2019 Feb;312:20-32. // Cell Commun Signal. 2016 Dec 15;14(1):32. // PLoS One. 2015 Apr 7;10(4):e0123642. |

For additional information on this antibody [view antibody link](#).

This antibody is certified for Simple Western™ technology. To learn about Simple Western technology, available antibodies, or to submit new antibodies, visit the links below. For additional information, please contact:

[support@proteinsimple.com](mailto:support@proteinsimple.com)

[Simple Western Systems](#)

[Simple Western Antibody Database](#)

[Submit Antibody Validation Data](#)