

SIMPLE WESTERN CERTIFIED ANTIBODY DATASHEET

[View
Antibody Link](#)

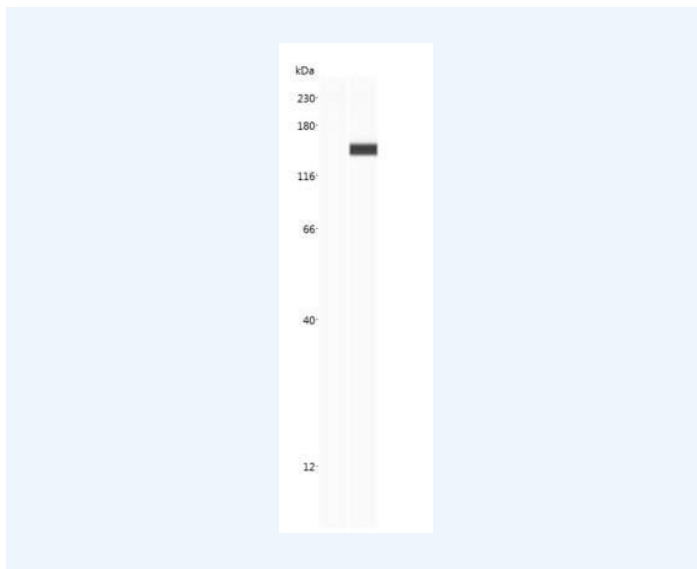


Figure1 CRISPR-Cas9 Antibody (6G12) - C-terminus [NBP2-52398] - Image shows a specific band for Cas9 in 0.2 mg/mL of HeLa Cas9 lysate but not in HeLa WT lysate. This experiment was performed under reducing conditions using the 12-230 kDa separation system. Observed molecular weight is ~158 kDa.

PROTEIN TARGET/ANTIBODY	
Protein Target	CRISPR-Cas9
Protein Isoform	CRISPR-Cas9 Antibody (6G12) - C-terminus
Antibody Type	Primary
Host Species/Clonality	Mouse Monoclonal
ASSAY	
Sample Type	HeLa Cas9 lysate and HeLa WT lysate
Sample Concentration	0.2 mg/mL
Antibody Concentration/Dilution	
Antibody Diluent	
Detection Mode	Chemiluminescence
Separation Type	Size
Matrix	12-230 kDa
Observed kDa	158 kDa
Publications	None listed

This antibody is validated for Gel-Free, Blot Free, Hands Free Simple Western Systems. To learn about Simple Western Systems, available Simple Western antibodies, or new antibody submissions visit the links below. For additional information, please contact support@proteinsimple.com.

[Simple Western Systems](#)

[Simple Western Antibody Database](#)

[Simple Western Antibody Submission](#)