

Product Datasheet

GLP-1R Antibody - BSA Free NLS1205

Unit Size: 0.05 ml

Store at 4C short term. Aliquot and store at -80C long term. Avoid freeze-thaw cycles.

www.novusbio.com



technical@novusbio.com

Reviews: 1 Publications: 8

Protocols, Publications, Related Products, Reviews, Research Tools and Images at:
www.novusbio.com/NLS1205

Updated 12/20/2023 v.20.1

**Earn rewards for product
reviews and publications.**

Submit a publication at www.novusbio.com/publications

Submit a review at www.novusbio.com/reviews/destination/NLS1205



NLS1205

GLP-1R Antibody - BSA Free

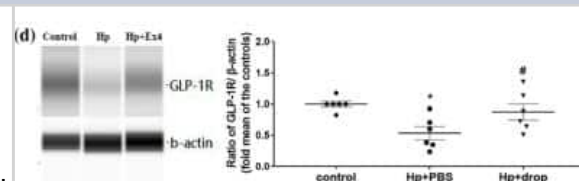
Product Information	
Unit Size	0.05 ml
Concentration	1.0 mg/ml
Storage	Store at 4C short term. Aliquot and store at -80C long term. Avoid freeze-thaw cycles.
Clonality	Polyclonal
Preservative	0.02% Sodium Azide
Isotype	IgG
Purity	Immunogen affinity purified
Buffer	PBS
Target Molecular Weight	53 kDa

Product Description	
Host	Rabbit
Gene ID	2740
Gene Symbol	GLP1R
Species	Human, Mouse, Rat
Reactivity Notes	Rat reactivity reported in scientific literature (PMID: 26398375).
Immunogen	A synthetic peptide made to an N-terminal extracellular portion of the human GLP1R protein (between residues 100-200). [UniProt P43220]

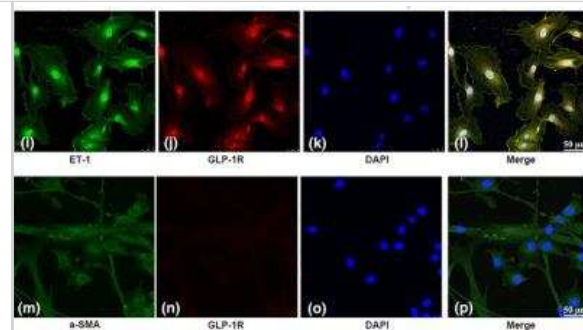
Product Application Details	
Applications	Western Blot, Simple Western, Immunocytochemistry/ Immunofluorescence, Immunohistochemistry, Immunohistochemistry-Paraffin, Microarray, Immunocytochemistry
Recommended Dilutions	Western Blot 1 - 2 ug/mL, Simple Western 1:50, Immunohistochemistry 10 - 20 ug/mL, Immunocytochemistry/ Immunofluorescence reported in scientific literature (PMID 32232832), Immunohistochemistry-Paraffin 10 - 20 ug/mL, Microarray reported by customer review, Immunocytochemistry
Application Notes	In Simple Western only 10 - 15 uL of the recommended dilution is used per data point. Separated by Size-Wes, Sally Sue/Peggy Sue. The observed molecular weight of the protein may vary from the listed predicted molecular weight due to post translational modifications, post translation cleavages, relative charges, and other experimental factors.

Images

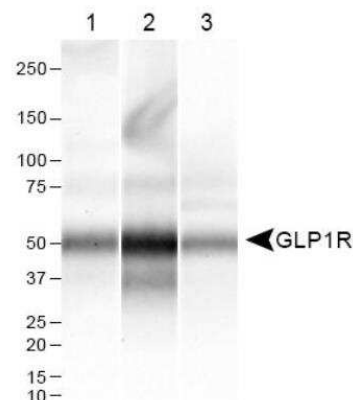
Simple Western: GLP-1R Antibody [NLS1205] - Capillary western blot and fold change in the expression of GLP-1 receptors (GLP-1R) in the rat retina. *P < .05, significantly different from CSF group; #P < .05 significantly different from noradrenaline without exendin-4 group. Image collected and cropped by CiteAb from the following publication (<https://bpspubs.onlinelibrary.wiley.com/doi/10.1111/bph.15059>) licensed under a CC-BY license.



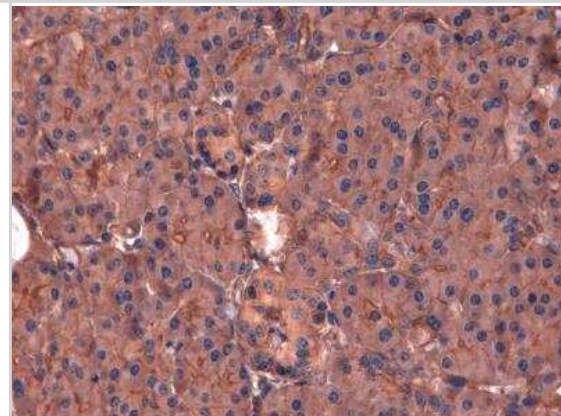
Immunocytochemistry: GLP-1R Antibody [NLS1205] - Expression of GLP-1 receptors in human retinal microvascular endothelial cells (HRMECs). (i) Endothelial cells labelled with endothelin-1 (ET-1) antibodies (green). (j) GLP-1 receptors are labelled in red. (k) DAPI staining indicates the cell nucleus (blue). (l) Merged images. (m-p) Evaluation of GLP-1 receptors expression in human retinal pericytes (HRPs). (m) Pericytes labelled with alpha-SMA antibodies (green). (n) GLP-1 receptors are labelled in red. (o) DAPI staining indicates the cell nucleus (blue). (l and p) merged images. Image collected and cropped by CiteAb from the following publication (<https://bpspubs.onlinelibrary.wiley.com/doi/10.1111/bph.15059>) licensed under a CC-BY license.



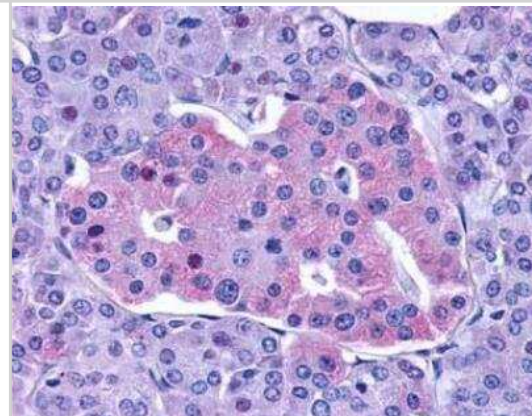
Western Blot: GLP-1R Antibody [NLS1205] - WB detection of GLP-1R in lysates of human (1) pancreas (2) lung and (3) kidney tissues using 2 ug/mL concentration of GLP-1R antibody.



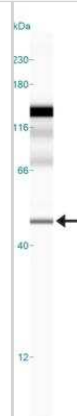
Immunohistochemistry: GLP-1R Antibody [NLS1205] - Analysis of GLP-1R in mouse pancreas.



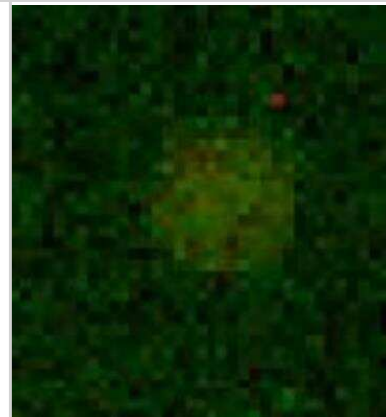
Immunohistochemistry: GLP-1R Antibody [NLS1205] - Human pancreas (Islets of Langerhans).



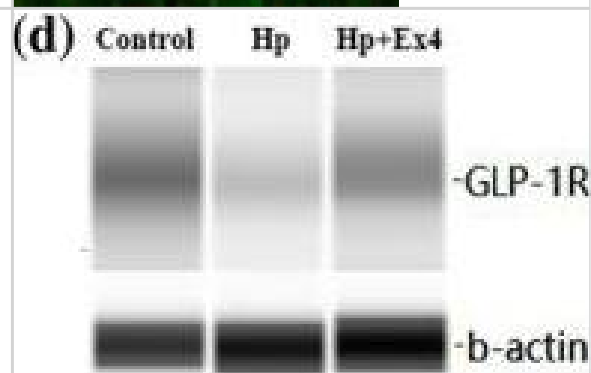
Simple Western: GLP-1R Antibody [NLS1205] - Image shows a specific band for GLP-1R in 0.5 mg/mL of HEK293 lysate. This experiment was performed under reducing conditions using the 12-230 kDa separation system.



Microarray: GLP-1R Antibody [NLS1205] - Antibody was printed on custom arrays and incubated with fluorescently labeled human EDTA plasma. Microarray image submitted by a verified customer review.



Effect of the administration of exendin-4 on eNOS expression. (a) Capillary western blot of total eNOS and phosphorylated eNOS expression in the rat retina. The red box indicates the target protein. Image collected and cropped by CiteAb from the following publication (<https://pubmed.ncbi.nlm.nih.gov/32232832>), licensed under a CC-BY licence.



Publications

So WY, Liao Y, Liu WN et al. Paired box 6 gene delivery preserves beta cells and improves islet transplantation efficacy EMBO molecular medicine 2023-11-07 [PMID: 37933577] (WB, Human)

Details:

1:1000 dilution

de Paiva I, Silva R, Mendonça I et al. Semaglutide Attenuates Anxious And Depressive-Like Behaviors and Reverses The Cognitive Impairment in a Type 2 Diabetes Mellitus Via The Microbiota-Gut-Brain Axis Research Square 2023-09-15 (IHC-P, WB, Mouse)

Wei L, Mo W, Lan S et al. GLP-1 RA Improves Diabetic Retinopathy by Protecting the Blood-Retinal Barrier through GLP-1R-ROCK-p-MLC Signaling Pathway Journal of diabetes research 2022-11-03 [PMID: 36387940] (WB, IHC-P, Mouse)

Eicher AK, Kechele DO, Sundaram N Et al. Functional human gastrointestinal organoids can be engineered from three primary germ layers derived separately from pluripotent stem cells Cell stem cell 2021-11-23 [PMID: 34856121] (IHC-P)

Zhai R, Xu H, Hu F et al. GLP-1 Receptor Agonist Exendin-4 Regulates Retinal Capillary Tone and Restores Microvascular Patency Under Ischemia-reperfusion Injury Br. J. Pharmacol. 2020-03-30 [PMID: 32232832] (ICC/IF, WB, Human)

Kimura T, Obata A, Shimoda M et al. Decreased glucagon-like peptide 1 receptor expression in endothelial and smooth muscle cells in diabetic db/db mice: TCF7L2 is a possible regulator of the vascular glucagon-like peptide 1 receptor Diab Vasc Dis Res 2017-08-01 [PMID: 28830217] (Mouse)

Karabulut S, Coskun ZM, Bolkent S. Immunohistochemical, apoptotic and biochemical changes by dipeptidyl peptidase-4 inhibitor-sitagliptin in type-2 diabetic rats. Pharmacol Rep 2015-10-01 [PMID: 26398375] (Rat)

Matveyenko AV, Dry S, Cox HI et al. Beneficial Endocrine but Adverse Exocrine Effects of Sitagliptin in the Human Islet Amyloid Polypeptide Transgenic Rat Model of Type 2 Diabetes: Interactions With Metformin. Diabetes;58 (7):1604-1615. 2009-01-01 [PMID: 19403868]



Procedures

IHC Protocol specific for GLP1R Antibody (NLS1205)

Immunohistochemistry-Paraffin Embedded Sections

Antigen Unmasking:

Bring slides to a boil in 10 mM sodium citrate buffer (pH 6.0) then maintain at a sub-boiling temperature for 10 minutes. Cool slides on bench-top for 30 minutes.

Staining:

1. Wash sections in deionized water three times for 5 minutes each.
2. Wash sections in wash buffer for 5 minutes.
3. Block each section with 100-400 ul blocking solution for 1 hour at room temperature.
4. Remove blocking solution and add 100-400 ul diluted primary antibody. Incubate overnight at 4 degrees C.
5. Remove antibody solution and wash sections in wash buffer three times for 5 minutes each.
6. Add 100-400 ul biotinylated diluted secondary antibody. Incubate 30 minutes at room temperature.
7. Remove secondary antibody solution and wash sections three times with wash buffer for 5 minutes each.
8. Add 100-400 ul Streptavidin-HRP reagent to each section and incubate for 30 minutes at room temperature.
9. Wash sections three times in wash buffer for 5 minutes each.
10. Add 100-400 ul DAB substrate to each section and monitor staining closely.
11. As soon as the sections develop, immerse slides in deionized water.
12. Counterstain sections in hematoxylin.
13. Wash sections in deionized water two times for 5 minutes each.
14. Dehydrate sections.
15. Mount coverslips.

Western blot Protocol for GLP1R NLS1205

Western Blot Protocol

1. Perform SDS-PAGE on samples to be analyzed, loading 40 ug of total protein per lane.
2. Transfer proteins to membrane according to the instructions provided by the manufacturer of the membrane and transfer apparatus.
3. Stain according to standard Ponceau S procedure (or similar product) to assess transfer success, and mark molecular weight standards where appropriate.
4. Rinse the blot.
5. Block the membrane using standard blocking buffer for at least 1 hour.
6. Wash the membrane in wash buffer three times for 10 minutes each.
7. Dilute primary antibody in blocking buffer and incubate 1 hour at room temperature.
8. Wash the membrane in wash buffer three times for 10 minutes each.
9. Apply the diluted HRP conjugated secondary antibody in blocking buffer (as per manufacturers instructions) and incubate 1 hour at room temperature.
10. Wash the blot in wash buffer three times for 10 minutes each (this step can be repeated as required to reduce background).
11. Apply the detection reagent of choice in accordance with the manufacturers instructions.

Note: Tween-20 can be added to the blocking or antibody dilution buffer at a final concentration of 0.05-0.2%.





Novus Biologicals USA

10730 E. Briarwood Avenue
Centennial, CO 80112
USA
Phone: 303.730.1950
Toll Free: 1.888.506.6887
Fax: 303.730.1966
nb-customerservice@bio-techne.com

Bio-Techne Canada

21 Canmotor Ave
Toronto, ON M8Z 4E6
Canada
Phone: 905.827.6400
Toll Free: 855.668.8722
Fax: 905.827.6402
canada.inquires@bio-techne.com

Bio-Techne Ltd

19 Barton Lane
Abingdon Science Park
Abingdon, OX14 3NB, United Kingdom
Phone: (44) (0) 1235 529449
Free Phone: 0800 37 34 15
Fax: (44) (0) 1235 533420
info.EMEA@bio-techne.com

General Contact Information

www.novusbio.com
Technical Support: nb-technical@bio-techne.com
Orders: nb-customerservice@bio-techne.com
General: novus@novusbio.com

Products Related to NLS1205

NB820-59244	Human Pancreas Whole Tissue Lysate (Adult Whole Normal)
NLS1205PEP	GLP-1R Antibody Blocking Peptide
HAF008	Goat anti-Rabbit IgG Secondary Antibody [HRP]
NB7160	Goat anti-Rabbit IgG (H+L) Secondary Antibody [HRP]
NBP2-24891	Rabbit IgG Isotype Control

Limitations

This product is for research use only and is not approved for use in humans or in clinical diagnosis. Primary Antibodies are guaranteed for 1 year from date of receipt.

For more information on our 100% guarantee, please visit www.novusbio.com/guarantee

Earn gift cards/discounts by submitting a review: www.novusbio.com/reviews/submit/NLS1205

Earn gift cards/discounts by submitting a publication using this product:

www.novusbio.com/publications

