

# Product Datasheet

## Calcium-sensing R/CaSR Antibody (HL 1499) - Azide and BSA Free NBP2-80607

Unit Size: 0.1 ml

Aliquot and store at -20C or -80C. Avoid freeze-thaw cycles.

[www.novusbio.com](http://www.novusbio.com)



[technical@novusbio.com](mailto:technical@novusbio.com)

Protocols, Publications, Related Products, Reviews, Research Tools and Images at:  
[www.novusbio.com/NBP2-80607](http://www.novusbio.com/NBP2-80607)

Updated 6/1/2021 v.20.1

Earn rewards for product reviews and publications.

Submit a publication at [www.novusbio.com/publications](http://www.novusbio.com/publications)

Submit a review at [www.novusbio.com/reviews/destination/NBP2-80607](http://www.novusbio.com/reviews/destination/NBP2-80607)



**NBP2-80607**

Calcium-sensing R/CaSR Antibody (HL 1499) - Azide and BSA Free

Product Information	
Unit Size	0.1 ml
Concentration	1 mg/ml
Storage	Aliquot and store at -20C or -80C. Avoid freeze-thaw cycles.
Clonality	Monoclonal
Clone	HL 1499
Preservative	No Preservative
Isotype	IgG1 Kappa
Purity	Protein G purified
Buffer	Tris-Glycine, 0.15 M NaCl
Target Molecular Weight	130 kDa

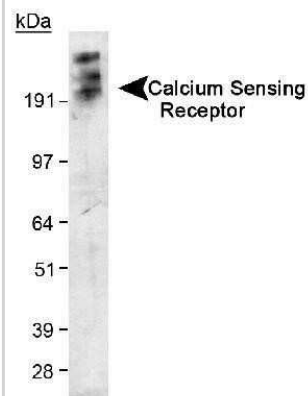
Product Description	
Host	Mouse
Gene ID	846
Gene Symbol	CASR
Species	Human, Mouse, Rat, Rabbit
Immunogen	N-terminal region of human Calcium Sensing Receptor. [UniProt# P41180]

Product Application Details	
Applications	Western Blot, Simple Western, ELISA, Flow Cytometry, Immunocytochemistry/Immunofluorescence, Immunohistochemistry-Paraffin, Immunoprecipitation, Radioimmunoassay
Recommended Dilutions	Western Blot : 1:50 - 1:200, Simple Western : 1:200, Flow Cytometry : 1 ug/10 <sup>6</sup> cells, ELISA : 1:100 - 1:2000, Immunocytochemistry/Immunofluorescence : 1:50 - 1:200, Immunoprecipitation : 5 - 10 ug, Immunohistochemistry-Paraffin, Radioimmunoassay
Application Notes	<p>In Western blot transfected samples were tested, where a band was seen ~130 kDa and a large smear at the top of the gel.</p> <p>In Simple Western only 10 - 15 uL of the recommended dilution is used per data point. Separated by Size-Wes, Sally Sue/Peggy Sue. The observed molecular weight of the protein may vary from the listed predicted molecular weight due to post translational modifications, post translation cleavages, relative charges, and other experimental factors.</p>

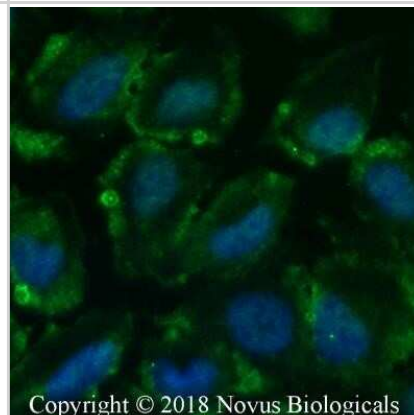


## Images

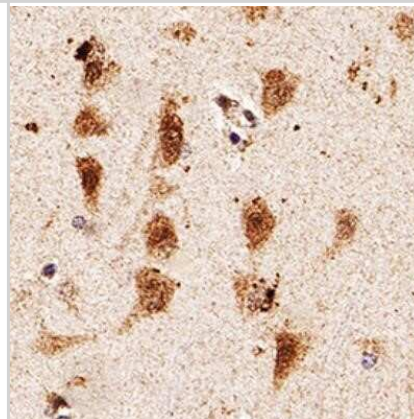
Western Blot: Calcium-sensing R/CaSR Antibody (HL 1499) - Azide and BSA Free [NBP2-80607] - Detection of Calcium Sensing Receptor in transfected 293 cell lysate using NB 100-1830. ECL exposure, 5 minutes. In this photo, the protein has aggregated and thus the higher MW band as expected. Image from the standard format of this antibody.



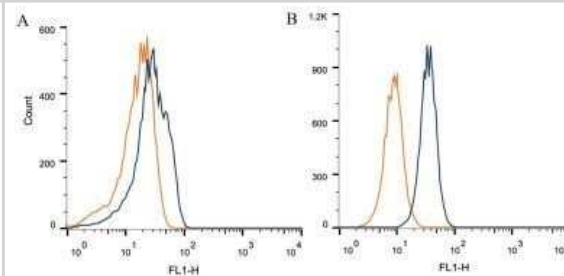
Immunocytochemistry/Immunofluorescence: Calcium-sensing R/CaSR Antibody (HL 1499) - Azide and BSA Free [NBP2-80607] - U2OS cells were fixed for 10 minutes using 10% formalin and then permeabilized for 5 minutes using 1X PBS + 0.05% Triton X-100. The cells were incubated with antibody at 5 ug/mL overnight at 4C and detected with an anti-mouse Dylight 488 (Green) at 1:500. Nuclei were counterstained with DAPI (Blue). Cells were imaged using a 40X objective. Image from the standard format of this antibody.



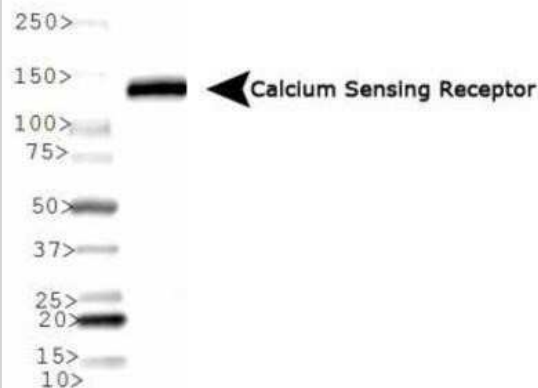
Immunohistochemistry-Paraffin: Calcium-sensing R/CaSR Antibody (HL 1499) - Azide and BSA Free [NBP2-80607] - Analysis of FFPE human brain using Calcium-sensing R/CaSR antibody at 1:50 on a Bond Rx autostainer (Leica Biosystems). The assay involved 20 minutes of heat induced antigen retrieval (HIER) using 10mM sodium citrate buffer (pH 6.0) and endogenous peroxid



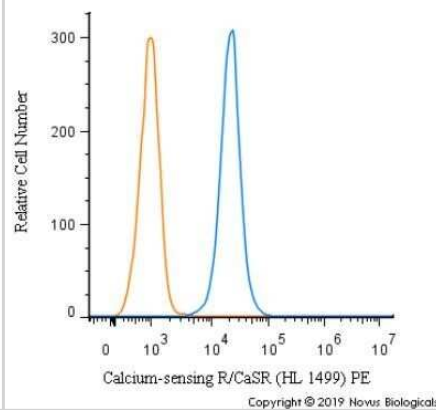
Flow Cytometry: Calcium-sensing R/CaSR Antibody (HL 1499) - Azide and BSA Free [NBP2-80607] - Intracellular flow cytometric staining of  $1 \times 10^6$  CHO (A) and HEK-293 (B) cells using calcium sensing receptor antibody (dark blue). Isotype control shown in orange. Antibody at  $1 \mu\text{g}/1 \times 10^6$  cells. Image from the standard format of this antibody.



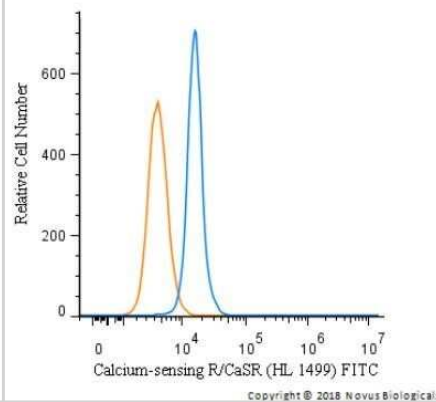
Western Blot: Calcium-sensing R/CaSR Antibody (HL 1499) - Azide and BSA Free [NBP2-80607] - Analysis of Calcium Sensing Receptor expression in rat kidney tissue. Image from the standard format of this antibody.



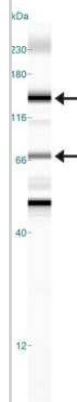
Flow Cytometry: Calcium-sensing R/CaSR Antibody (HL 1499) - Azide and BSA Free [NBP2-80607] - An intracellular stain was performed on Hek293 cells with Calcium-sensing R/CaSR Antibody (HL 1499) NB100-1830PE (blue) and a matched isotype control (orange). Cells were fixed with 4% PFA and then permeabilized with 0.1% saponin. Cells were incubated in an antibody dilution of 2.5 ug/mL for 30 minutes at room temperature. Both antibodies were directly conjugated to Phycoerythrin.



Flow Cytometry: Calcium-sensing R/CaSR Antibody (HL 1499) - Azide and BSA Free [NBP2-80607] - An intracellular stain was performed on HEK293 cells with Calcium-sensing R/CaSR Antibody [HL 1499] NB100-1830F (blue) and a matched isotype control (orange). Cells were fixed with 4% PFA and then permeabilized with 0.1% saponin. Cells were incubated in an antibody dilution of 5 ug/mL for 30 minutes at room temperature. Both antibodies were directly conjugated to FITC.



Simple Western: Calcium-sensing R/CaSR Antibody (HL 1499) - Azide and BSA Free [NBP2-80607] - Image shows a specific band for Calcium Sensing Receptor in 0.5 mg/mL of HEK293 lysate. This experiment was performed under reducing conditions using the 12-230 kDa separation system. Image from the standard format of this antibody.





### **Novus Biologicals USA**

10730 E. Briarwood Avenue  
Centennial, CO 80112  
USA  
Phone: 303.730.1950  
Toll Free: 1.888.506.6887  
Fax: 303.730.1966  
nb-customerservice@bio-techne.com

### **Bio-Techne Canada**

21 Canmotor Ave  
Toronto, ON M8Z 4E6  
Canada  
Phone: 905.827.6400  
Toll Free: 855.668.8722  
Fax: 905.827.6402  
canada.inquires@bio-techne.com

### **Bio-Techne Ltd**

19 Barton Lane  
Abingdon Science Park  
Abingdon, OX14 3NB, United Kingdom  
Phone: (44) (0) 1235 529449  
Free Phone: 0800 37 34 15  
Fax: (44) (0) 1235 533420  
info.EMEA@bio-techne.com

### **General Contact Information**

www.novusbio.com  
Technical Support: nb-technical@bio-techne.com  
Orders: nb-customerservice@bio-techne.com  
General: novus@novusbio.com

### **Products Related to NBP2-80607**

---

HAF007	Goat anti-Mouse IgG Secondary Antibody [HRP]
NB720-B	Rabbit anti-Mouse IgG (H+L) Secondary Antibody [Biotin]
NBP1-43319-0.5mg	Mouse IgG1 Kappa Isotype Control (P3.6.2.8.1)
NBP1-84687PEP	Calcium-sensing R/CaSR Recombinant Protein Antigen

---

### **Limitations**

This product is for research use only and is not approved for use in humans or in clinical diagnosis. Primary Antibodies are guaranteed for 1 year from date of receipt.

For more information on our 100% guarantee, please visit [www.novusbio.com/guarantee](http://www.novusbio.com/guarantee)

Earn gift cards/discounts by submitting a review: [www.novusbio.com/reviews/submit/NBP2-80607](http://www.novusbio.com/reviews/submit/NBP2-80607)

Earn gift cards/discounts by submitting a publication using this product:  
[www.novusbio.com/publications](http://www.novusbio.com/publications)

