

Product Datasheet

Cytokeratin 8/18 Antibody (KRT8/803 + KRT18/835) NBP2-44930-0.1mg

Unit Size: 0.1 mg

Store at 4C.

www.novusbio.com



technical@novusbio.com

Protocols, Publications, Related Products, Reviews, Research Tools and Images at:
www.novusbio.com/NBP2-44930

Updated 7/16/2024 v.20.1

Earn rewards for product
reviews and publications.

Submit a publication at www.novusbio.com/publications

Submit a review at www.novusbio.com/reviews/destination/NBP2-44930



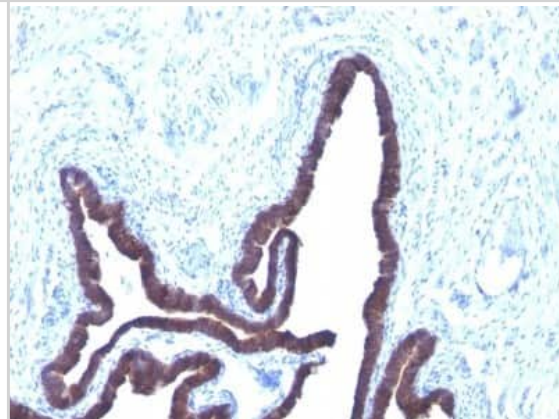
NBP2-44930-0.1mg

Cytokeratin 8/18 Antibody (KRT8/803 + KRT18/835)

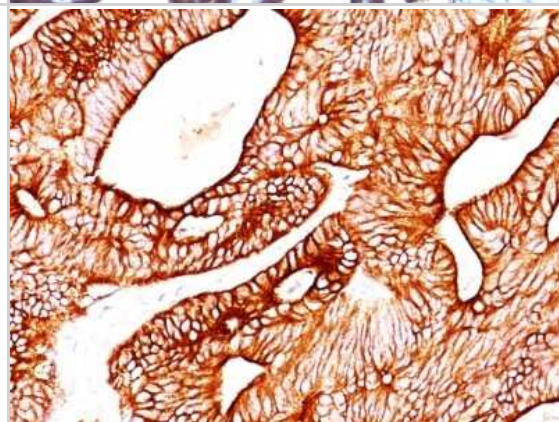
Product Information	
Unit Size	0.1 mg
Concentration	0.2 mg/ml
Storage	Store at 4C.
Clonality	Monoclonal
Clone	KRT8/803 + KRT18/835
Preservative	0.05% Sodium Azide
Isotype	IgG1 Kappa/IgG1 Kappa
Purity	Protein A or G purified
Buffer	10 mM PBS with 0.05% BSA
Product Description	
Description	200ug/ml of antibody purified from Bioreactor Concentrate by Protein A or G. Prepared in 10 mM PBS with 0.05% BSA & 0.05% azide. Also available WITHOUT BSA & azide at 1.0 mg/ml. (NBP2-47983) Antibody with azide - store at 2 to 8C. Antibody without azide - store at -20 to -80C.
Host	Mouse
Gene ID	3856
Gene Symbol	KRT8
Species	Human
Specificity/Sensitivity	Cytokeratin 8 (CK8) belongs to the type II (or B or basic) subfamily of high molecular weight cytokeratins and exists in combination with cytokeratin 18 (CK18). This monoclonal antibody cocktail recognizes all simple epithelia including glandular epithelium, for example thyroid, female breast, gastrointestinal tract, respiratory tract, and urogenital tract including transitional epithelium. All adenocarcinomas and most squamous carcinomas are positive but keratinizing squamous carcinomas are usually negative. This antibody is useful in demonstrating the presence of Paget cells; there is very little keratin 18 in the normal epidermis so only Paget cells are stained. Immuno-histochemical staining with this monoclonal antibody is indistinguishable from that obtained with monoclonal antibody 5D3.
Immunogen	Recombinant full-length human KRT8 protein (KRT8/803); Recombinant full-length human KRT18 protein (KRT18/835)
Product Application Details	
Applications	Simple Western, Flow Cytometry, Immunohistochemistry, Immunohistochemistry-Paraffin
Recommended Dilutions	Simple Western 10 ug/ml, Flow Cytometry 0.5 - 1 ug/million cells in 0.1 ml, Immunohistochemistry, Immunohistochemistry-Paraffin 0.1-0.2 ug/ml
Application Notes	Immunohistochemistry (Formalin-fixed): 0.1-0.2ug/ml for 30 min at RT. Staining of formalin-fixed tissues requires heating tissue sections in 10mM Tris with 1mM EDTA, pH 9.0, for 45 min at 95C followed by cooling at RT for 20 minutes. Optimal dilution for a specific application should be determined. In Simple Western only 10 - 15 ul of the recommended dilution is used per data point. Separated by Size.

Images

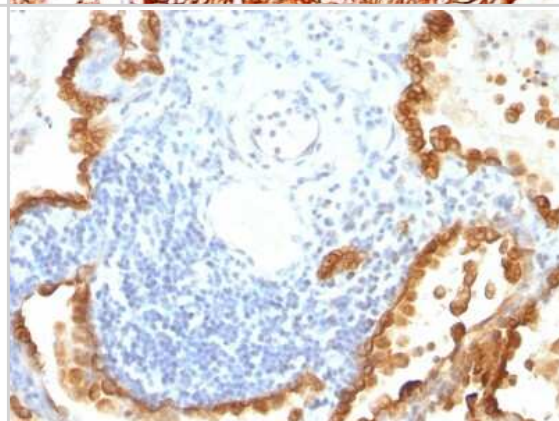
Immunohistochemistry-Paraffin: Cytokeratin 8/18 Antibody (KRT8/803 + KRT18/835) [NBP2-44930] - Human Ovarian Carcinoma stained with Cytokeratin 8/18 Monoclonal Antibody (KRT8/803 + KRT18/835).



Immunohistochemistry-Paraffin: Cytokeratin 8/18 Antibody (KRT8/803 + KRT18/835) [NBP2-44930] - Human Colon Carcinoma stained with Cytokeratin 8/18 Monoclonal Antibody (KRT8/803 + KRT18/835).



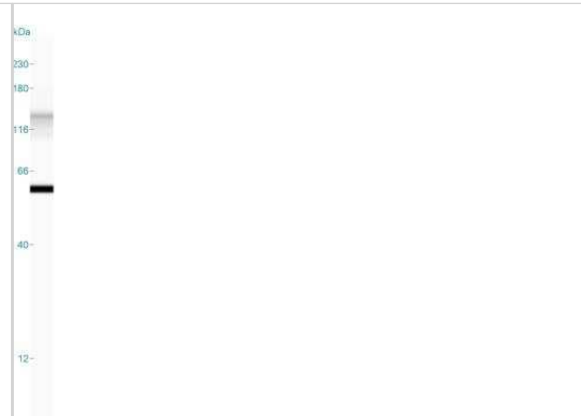
Immunohistochemistry-Paraffin: Cytokeratin 8/18 Antibody (KRT8/803 + KRT18/835) [NBP2-44930] - Human Lung Carcinoma stained with Cytokeratin 8/18 Monoclonal Antibody (KRT8/803 + KRT18/835).



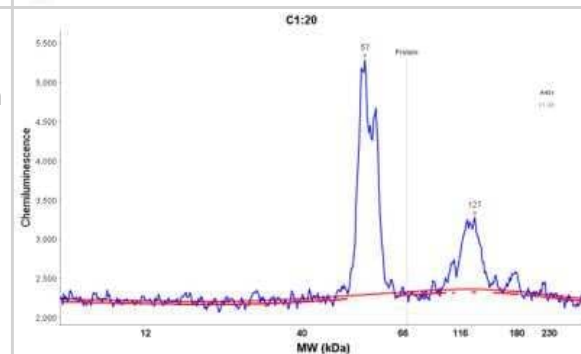
Simple Western: Cytokeratin 8/18 Antibody (KRT8/803 + KRT18/835) [NBP2-44930] - Simple Western lane view shows a specific band for Cytokeratin 8/18 in 0.2 mg/ml of A431 lysate. This experiment was performed under reducing conditions using the 12-230 kDa separation system.



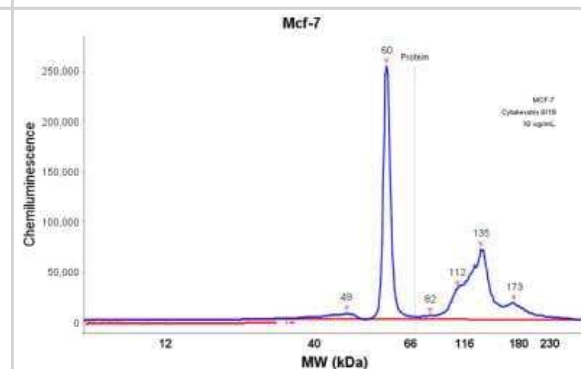
Simple Western: Cytokeratin 8/18 Antibody (KRT8/803 + KRT18/835) [NBP2-44930] - Simple Western lane view shows a specific band for Cytokeratin 8/18 in 0.2 mg/ml of A431 lysate. This experiment was performed under reducing conditions using the 12-230 kDa separation system.



Simple Western: Cytokeratin 8/18 Antibody (KRT8/803 + KRT18/835) [NBP2-44930] - Electropherogram image of the corresponding Simple western lane. Cytokeratin 8/18 antibody was used at 10 ug/ml dilution on A431 lysate(s) respectively.



Simple Western: Cytokeratin 8/18 Antibody (KRT8/803 + KRT18/835) [NBP2-44930] - Electropherogram image of the corresponding Simple western lane view. Cytokeratin 8/18 antibody was used at 10 ug/ml dilution on MCF-7 lysate(s) respectively.





Novus Biologicals USA

10730 E. Briarwood Avenue
Centennial, CO 80112
USA
Phone: 303.730.1950
Toll Free: 1.888.506.6887
Fax: 303.730.1966
nb-customerservice@bio-techne.com

Bio-Techne Canada

21 Canmotor Ave
Toronto, ON M8Z 4E6
Canada
Phone: 905.827.6400
Toll Free: 855.668.8722
Fax: 905.827.6402
canada.inquires@bio-techne.com

Bio-Techne Ltd

19 Barton Lane
Abingdon Science Park
Abingdon, OX14 3NB, United Kingdom
Phone: (44) (0) 1235 529449
Free Phone: 0800 37 34 15
Fax: (44) (0) 1235 533420
info.EMEA@bio-techne.com

General Contact Information

www.novusbio.com
Technical Support: nb-technical@bio-techne.com
Orders: nb-customerservice@bio-techne.com
General: novus@novusbio.com

Products Related to NBP2-44930-0.1mg

HAF007	Goat anti-Mouse IgG Secondary Antibody [HRP]
NB720-B	Rabbit anti-Mouse IgG (H+L) Secondary Antibody [Biotin]
8184-CK-050	Choline Kinase beta [Unconjugated]
MAB1368	alpha-Fetoprotein/AFP Antibody (189502) [Unconjugated]

Limitations

This product is for research use only and is not approved for use in humans or in clinical diagnosis. Primary Antibodies are guaranteed for 1 year from date of receipt.

For more information on our 100% guarantee, please visit www.novusbio.com/guarantee

Earn gift cards/discounts by submitting a review: www.novusbio.com/reviews/submit/NBP2-44930

Earn gift cards/discounts by submitting a publication using this product:
www.novusbio.com/publications

