

# Product Datasheet

## Caldesmon/CALD1 Antibody (h-CALD)

### NBP2-44421-0.1mg

Unit Size: 0.1 mg

Store at 4C.

[www.novusbio.com](http://www.novusbio.com)



[technical@novusbio.com](mailto:technical@novusbio.com)

**Reviews: 1**

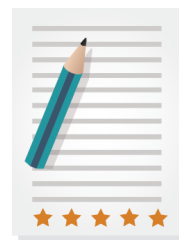
Protocols, Publications, Related Products, Reviews, Research Tools and Images at:  
[www.novusbio.com/NBP2-44421](http://www.novusbio.com/NBP2-44421)

Updated 7/16/2024 v.20.1

Earn rewards for product reviews and publications.

Submit a publication at [www.novusbio.com/publications](http://www.novusbio.com/publications)

Submit a review at [www.novusbio.com/reviews/destination/NBP2-44421](http://www.novusbio.com/reviews/destination/NBP2-44421)



**NBP2-44421-0.1mg**

Caldesmon/CALD1 Antibody (h-CALD)

Product Information	
Unit Size	0.1 mg
Concentration	0.2 mg/ml
Storage	Store at 4C.
Clonality	Monoclonal
Clone	h-CALD
Preservative	0.05% Sodium Azide
Isotype	IgG1 Kappa
Purity	Protein A or G purified
Buffer	10 mM PBS with 0.05% BSA
Target Molecular Weight	150 kDa

Product Description	
Description	200ug/ml of antibody purified from Bioreactor Concentrate by Protein A or G. Prepared in 10 mM PBS with 0.05% BSA & 0.05% azide. Also available WITHOUT BSA & azide at 1.0 mg/ml. (NBP2-47816)  Antibody with azide - store at 2 to 8C. Antibody without azide - store at -20 to -80C.
Host	Mouse
Gene ID	800
Gene Symbol	CALD1
Species	Human
Marker	Smooth Muscle Marker
Specificity/Sensitivity	Recognizes a protein of 150kDa, which is identified as the high molecular weight variant of Caldesmon. Two closely related variants of human caldesmon have been identified which are different in their electrophoretic mobility and cellular distribution. The h-caldesmon variant (12080kDa) is found in non- muscle tissue and cells. Neither of the two variants has been detected in skeletal muscle. This monoclonal antibody recognizes only the 150kDa variant (h-caldesmon) in Western blots of human aortic media extracts and is unreactive with fibroblast extracts from cultivated human foreskin. Caldesmon is a developmentally regulated protein involved in smooth muscle and non-muscle contraction.
Immunogen	Crude human uterus extract

Product Application Details	
Applications	Western Blot, Simple Western, Flow Cytometry, Immunocytochemistry/ Immunofluorescence, Immunohistochemistry, Immunohistochemistry-Paraffin, Immunofluorescence
Recommended Dilutions	Western Blot 2-4 ug/ml, Simple Western 10 ug/ml, Flow Cytometry 1-2 ug/million cells, Immunohistochemistry, Immunocytochemistry/ Immunofluorescence 1-2 ug/ml, Immunohistochemistry-Paraffin 1-2 ug/ml, Immunofluorescence 1 - 2 ug/ml

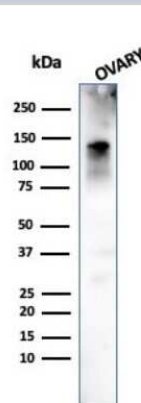


**Application Notes**

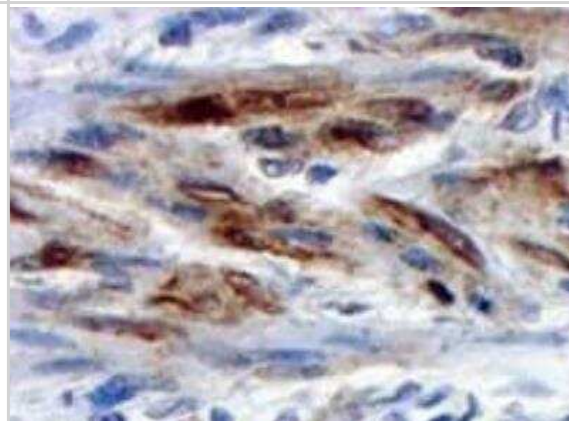
Immunohistochemistry (Formalin-fixed): 1-2ug/ml for 30 minutes at RT. Staining of formalin-fixed tissues requires heating tissue sections in 10mM Tris with 1mM EDTA, pH 9.0, for 45 min at 95C followed by cooling at RT for 20 minutes. Optimal dilution for a specific application should be determined. In Simple Western only 10 - 15 ul of the recommended dilution is used per data point. Separated by Size.

**Images**

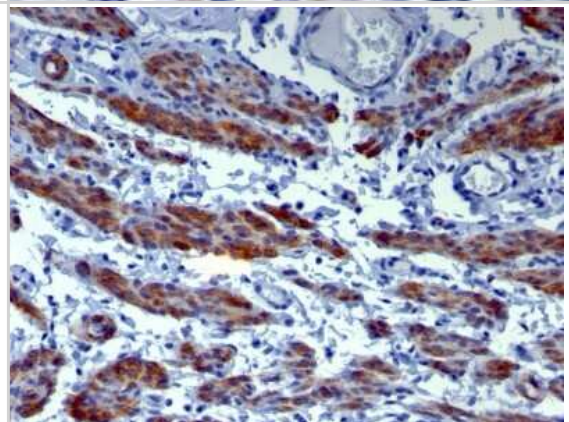
Western Blot: Caldesmon/CALD1 Antibody (h-CALD) [NBP2-44421] - Western Blot Analysis of human Ovary tissue using Caldesmon/CALD1 antibody (h-CALD).



Immunohistochemistry-Paraffin: Caldesmon/CALD1 Antibody (h-CALD) [NBP2-44421] - Analysis of Human uterus tissue using Caldesmon/CALD1 antibody (h-CALD). Image from verified customer review.



Immunohistochemistry-Paraffin: Caldesmon/CALD1 Antibody (h-CALD) [NBP2-44421] - Human Uterus stained with Caldesmon Monoclonal Antibody (h-CALD).



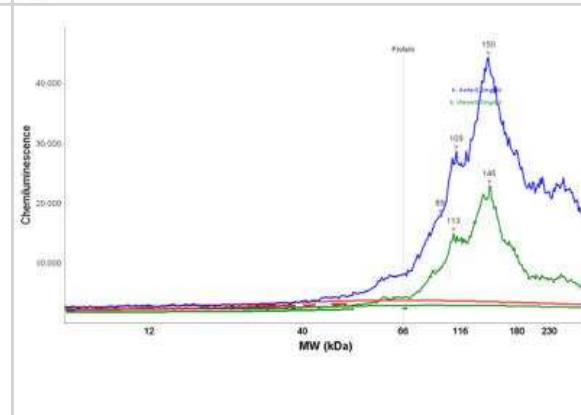
Simple Western: Caldesmon/CALD1 Antibody (h-CALD) [NBP2-44421] - Simple Western lane view shows a specific band for Caldesmon/CALD1 in 0.2 mg/ml of h. Aorta lysate(s). This experiment was performed under reducing conditions using the 12-230 kDa separation system.



Simple Western: Caldesmon/CALD1 Antibody (h-CALD) [NBP2-44421] - Simple Western lane view shows a specific band for Caldesmon/CALD1 in 0.2 mg/ml of h. Uterus lysate(s). This experiment was performed under reducing conditions using the 12-230 kDa separation system.



Simple Western: Caldesmon/CALD1 Antibody (h-CALD) [NBP2-44421] - Electropherogram image of the corresponding Simple Western lane. Caldesmon/CALD1 antibody was used at 10 ug/ml dilution of h. Aorta and h. Uterus lysates(s) respectively.





### **Novus Biologicals USA**

10730 E. Briarwood Avenue  
Centennial, CO 80112  
USA  
Phone: 303.730.1950  
Toll Free: 1.888.506.6887  
Fax: 303.730.1966  
nb-customerservice@bio-techne.com

### **Bio-Techne Canada**

21 Canmotor Ave  
Toronto, ON M8Z 4E6  
Canada  
Phone: 905.827.6400  
Toll Free: 855.668.8722  
Fax: 905.827.6402  
canada.inquires@bio-techne.com

### **Bio-Techne Ltd**

19 Barton Lane  
Abingdon Science Park  
Abingdon, OX14 3NB, United Kingdom  
Phone: (44) (0) 1235 529449  
Free Phone: 0800 37 34 15  
Fax: (44) (0) 1235 533420  
info.EMEA@bio-techne.com

### **General Contact Information**

www.novusbio.com  
Technical Support: nb-technical@bio-techne.com  
Orders: nb-customerservice@bio-techne.com  
General: novus@novusbio.com

### **Products Related to NBP2-44421-0.1mg**

---

HAF007	Goat anti-Mouse IgG Secondary Antibody [HRP]
NB720-B	Rabbit anti-Mouse IgG (H+L) Secondary Antibody [Biotin]
NBP1-43319-0.5mg	Mouse IgG1 Kappa Isotype Control (P3.6.2.8.1)
H00000800-P01-10ug	Recombinant Human Caldesmon/CALD1 GST (N-Term) Protein

---

### **Limitations**

This product is for research use only and is not approved for use in humans or in clinical diagnosis. Primary Antibodies are guaranteed for 1 year from date of receipt.

For more information on our 100% guarantee, please visit [www.novusbio.com/guarantee](http://www.novusbio.com/guarantee)

Earn gift cards/discounts by submitting a review: [www.novusbio.com/reviews/submit/NBP2-44421](http://www.novusbio.com/reviews/submit/NBP2-44421)

Earn gift cards/discounts by submitting a publication using this product:  
[www.novusbio.com/publications](http://www.novusbio.com/publications)

