

# Product Datasheet

## ADE2 Antibody NBP1-90235

Unit Size: 0.1 ml

Store at 4C short term. Aliquot and store at -20C long term. Avoid freeze-thaw cycles.

[www.novusbio.com](http://www.novusbio.com)



[technical@novusbio.com](mailto:technical@novusbio.com)

### Publications: 3

Protocols, Publications, Related Products, Reviews, Research Tools and Images at:  
[www.novusbio.com/NBP1-90235](http://www.novusbio.com/NBP1-90235)

Updated 6/7/2021 v.20.1

Earn rewards for product  
reviews and publications.

Submit a publication at [www.novusbio.com/publications](http://www.novusbio.com/publications)

Submit a review at [www.novusbio.com/reviews/destination/NBP1-90235](http://www.novusbio.com/reviews/destination/NBP1-90235)



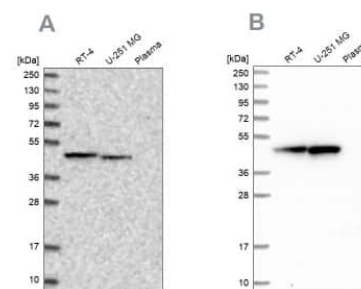
**NBP1-90235**

ADE2 Antibody

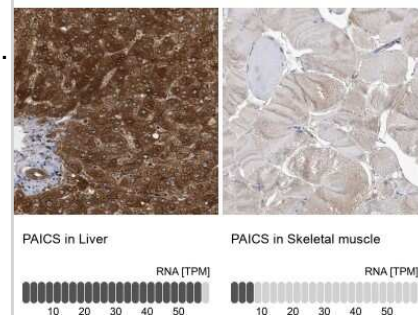
Product Information	
<b>Unit Size</b>	0.1 ml
<b>Concentration</b>	Concentrations vary lot to lot. See vial label for concentration. If unlisted please contact technical services.
<b>Storage</b>	Store at 4C short term. Aliquot and store at -20C long term. Avoid freeze-thaw cycles.
<b>Clonality</b>	Polyclonal
<b>Preservative</b>	0.02% Sodium Azide
<b>Isotype</b>	IgG
<b>Purity</b>	Immunogen affinity purified
<b>Buffer</b>	PBS (pH 7.2) and 40% Glycerol
<b>Target Molecular Weight</b>	47 kDa
Product Description	
<b>Host</b>	Rabbit
<b>Gene ID</b>	10606
<b>Gene Symbol</b>	PAICS
<b>Species</b>	Human, Mouse, Rat, Chinese Hamster
<b>Reactivity Notes</b>	Chinese Hamster reactivity reported in scientific literature (PMID: 23394948).
<b>Immunogen</b>	This antibody was developed against Recombinant Protein corresponding to amino acids: ETAFIAPQCEMPIEWVCRRIATGSFLKRNPVKEGYKFYPPKVELFFKDDANN DPQWSEEQLIAAKFCFAGLLIGQTEVDIMS
Product Application Details	
<b>Applications</b>	Western Blot, Simple Western, Immunohistochemistry, Immunohistochemistry-Paraffin
<b>Recommended Dilutions</b>	Western Blot 0.04-0.4 ug/ml, Simple Western 1:20, Immunohistochemistry 1:50 - 1:200, Immunohistochemistry-Paraffin 1:50 - 1:200
<b>Application Notes</b>	For IHC-Paraffin, HIER pH 6 retrieval is recommended.  In Simple Western only 10 - 15 uL of the recommended dilution is used per data point. Separated by Size-Wes, Sally Sue/Peggy Sue.

## Images

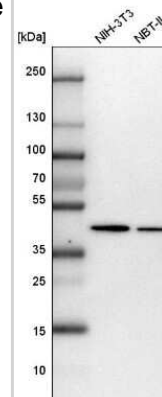
Western Blot: ADE2 Antibody [NBP1-90235] - Analysis using Anti-PAICS antibody NBP1-90235 (A) shows similar pattern to independent antibody NBP2-58966 (B).



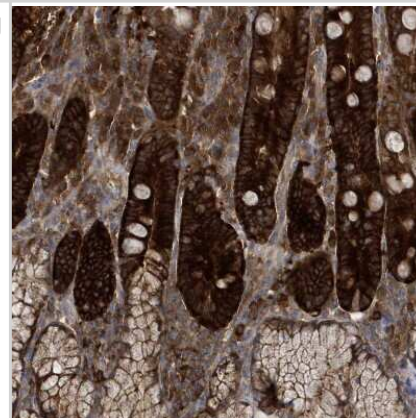
Immunohistochemistry-Paraffin: ADE2 Antibody [NBP1-90235] - Analysis in human liver and skeletal muscle tissues using NBP1-90235 antibody. Corresponding PAICS RNA-seq data are presented for the same tissues.



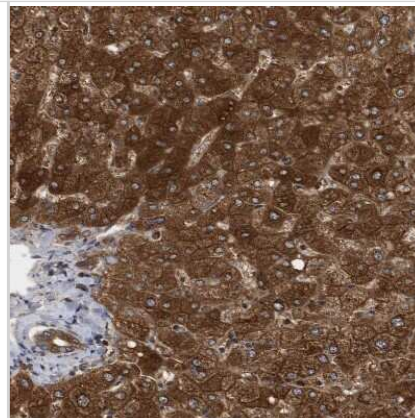
Western Blot: ADE2 Antibody [NBP1-90235] - Analysis in mouse cell line NIH-3T3 and rat cell line NBT-II.



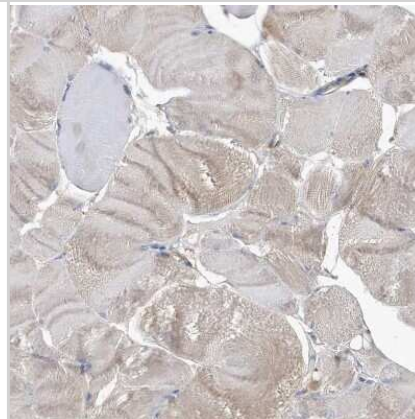
Immunohistochemistry-Paraffin: ADE2 Antibody [NBP1-90235] - Staining of human duodenum shows strong cytoplasmic positivity in glandular cells.



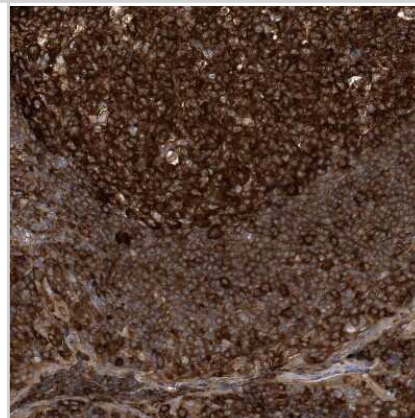
Immunohistochemistry-Paraffin: ADE2 Antibody [NBP1-90235] - Staining of human liver shows strong cytoplasmic positivity in hepatocytes.



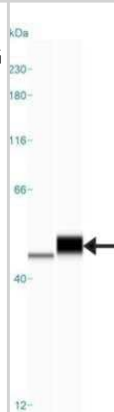
Immunohistochemistry-Paraffin: ADE2 Antibody [NBP1-90235] - Staining of human skeletal muscle shows very weak positivity in myocytes as expected.



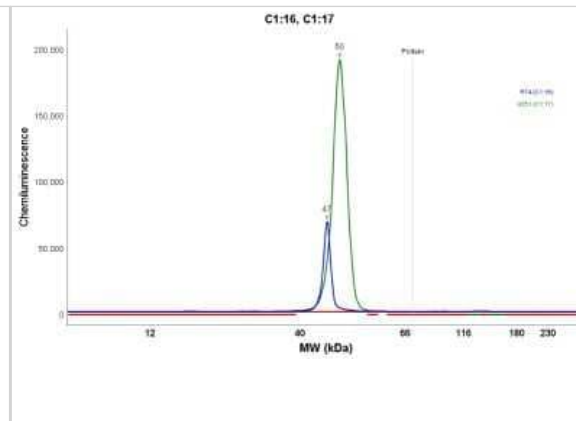
Immunohistochemistry-Paraffin: ADE2 Antibody [NBP1-90235] - Staining of human tonsil shows strong cytoplasmic positivity in germinal center cells.



Simple Western: ADE2 Antibody [NBP1-90235] - Simple Western lane view shows a specific band for ADE2 in 0.2 mg/ml of RT-4 and U-251MG lysate. This experiment was performed under reducing conditions using the 12-230 kDa separation system.



Simple Western: ADE2 Antibody [NBP1-90235] - Electropherogram image(s) of corresponding Simple Western lane view. ADE2 antibody was used at 1:20 dilution on RT-4 and U-251MG lysate(s).



## Publications

Barfeld SJ, Fazli L, Persson M et al. Myc-dependent purine biosynthesis affects nucleolar stress and therapy response in prostate cancer. *Oncotarget* 2015-05-20 [PMID: 25869206] (WB, IF/IHC, Human)

Zhao A, Tsechansky M, Swaminathan J et al. Transiently Transfected Purine Biosynthetic Enzymes Form Stress Bodies. *PLoS One* 2013-01-01 [PMID: 23405267]

Duval N, Luhrs K, Wilkinson TG II et al. Genetic and metabolomic analysis of AdeD and Adel mutants of de novo purine biosynthesis: cellular models of de novo purine biosynthesis deficiency disorders. *Mol Genet Metab* 2013-03-01 [PMID: 23394948] (WB, Chinese Hamster)



### **Novus Biologicals USA**

10730 E. Briarwood Avenue  
Centennial, CO 80112  
USA  
Phone: 303.730.1950  
Toll Free: 1.888.506.6887  
Fax: 303.730.1966  
nb-customerservice@bio-techne.com

### **Bio-Techne Canada**

21 Canmotor Ave  
Toronto, ON M8Z 4E6  
Canada  
Phone: 905.827.6400  
Toll Free: 855.668.8722  
Fax: 905.827.6402  
canada.inquires@bio-techne.com

### **Bio-Techne Ltd**

19 Barton Lane  
Abingdon Science Park  
Abingdon, OX14 3NB, United Kingdom  
Phone: (44) (0) 1235 529449  
Free Phone: 0800 37 34 15  
Fax: (44) (0) 1235 533420  
info.EMEA@bio-techne.com

### **General Contact Information**

www.novusbio.com  
Technical Support: nb-technical@bio-techne.com  
Orders: nb-customerservice@bio-techne.com  
General: novus@novusbio.com

### **Products Related to NBP1-90235**

---

NBP1-90235PEP	ADE2 Recombinant Protein Antigen
HAF008	Goat anti-Rabbit IgG Secondary Antibody [HRP]
NB7160	Goat anti-Rabbit IgG (H+L) Secondary Antibody [HRP]
NBP2-24891	Rabbit IgG Isotype Control

---

### **Limitations**

This product is for research use only and is not approved for use in humans or in clinical diagnosis. Primary Antibodies are guaranteed for 1 year from date of receipt.

For more information on our 100% guarantee, please visit [www.novusbio.com/guarantee](http://www.novusbio.com/guarantee)

Earn gift cards/discounts by submitting a review: [www.novusbio.com/reviews/submit/NBP1-90235](http://www.novusbio.com/reviews/submit/NBP1-90235)

Earn gift cards/discounts by submitting a publication using this product:  
[www.novusbio.com/publications](http://www.novusbio.com/publications)

