

# Product Datasheet

## Apolipoprotein L1 Antibody

### NBP1-89033

Unit Size: 0.1 ml

Store at 4C short term. Aliquot and store at -20C long term. Avoid freeze-thaw cycles.

[www.novusbio.com](http://www.novusbio.com)



[technical@novusbio.com](mailto:technical@novusbio.com)

#### Publications: 3

Protocols, Publications, Related Products, Reviews, Research Tools and Images at:  
[www.novusbio.com/NBP1-89033](http://www.novusbio.com/NBP1-89033)

Updated 12/20/2023 v.20.1

Earn rewards for product  
reviews and publications.

Submit a publication at [www.novusbio.com/publications](http://www.novusbio.com/publications)

Submit a review at [www.novusbio.com/reviews/destination/NBP1-89033](http://www.novusbio.com/reviews/destination/NBP1-89033)



**NBP1-89033**

## Apolipoprotein L1 Antibody

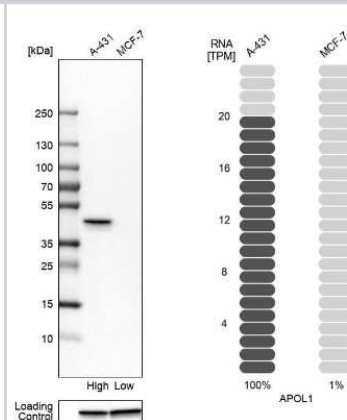
Product Information	
Unit Size	0.1 ml
Concentration	Concentrations vary lot to lot. See vial label for concentration. If unlisted please contact technical services.
Storage	Store at 4C short term. Aliquot and store at -20C long term. Avoid freeze-thaw cycles.
Clonality	Polyclonal
Preservative	0.02% Sodium Azide
Isotype	IgG
Purity	Immunogen affinity purified
Buffer	PBS (pH 7.2) and 40% Glycerol

Product Description	
Host	Rabbit
Gene ID	8542
Gene Symbol	APOL1
Species	Human
Immunogen	This antibody was developed against Recombinant Protein corresponding to amino acids: SNFLSLAGNTYQLTRGIGKDIRALRRARANLQSVPHASASRPRVTEPISAESGE QVERVNEPSILEMSRGVKLTDVAPVSFFLVLDVVYLVYESKHLHEGAKSETAEE LKKVAQELEEKLNILNN

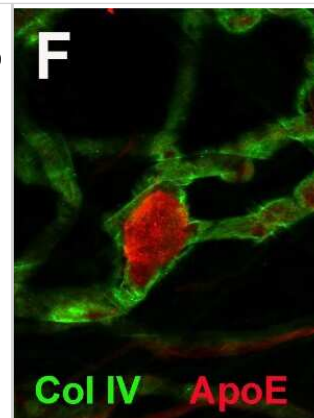
Product Application Details	
Applications	Western Blot, Simple Western, Immunocytochemistry/ Immunofluorescence, Immunohistochemistry, Immunohistochemistry-Paraffin
Recommended Dilutions	Western Blot 0.04 - 0.4 ug/ml, Simple Western 1:30, Immunohistochemistry 1:2500 -1:5000, Immunocytochemistry/ Immunofluorescence Reported in scientific literature (PMID : 29284024)., Immunohistochemistry-Paraffin 1:2500 - 1:5000
Application Notes	For IHC-Paraffin, HIER pH 6 retrieval is recommended.  In Simple Western only 10 - 15 uL of the recommended dilution is used per data point. Separated by Size-Wes, Sally Sue/Peggy Sue.

**Images**

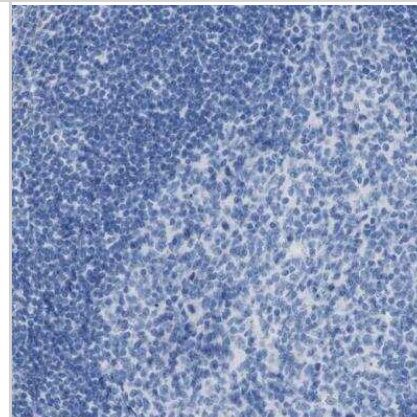
Western Blot: Apolipoprotein L1 Antibody [NBP1-89033] - Analysis in human cell lines A-431 and MCF-7 using anti-APOL1 antibody. Corresponding APOL1 RNA-seq data are presented for the same cell lines. Loading control: anti-GAPDH.



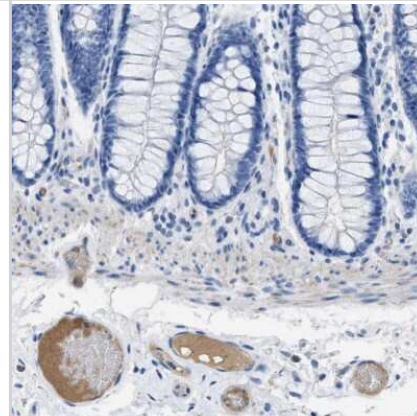
Immunocytochemistry/Immunofluorescence: Apolipoprotein L1 Antibody [NBP1-89033] - Staining of vascular BM whole mounts with antibodies to proteins detected in the proteome analysis. The same treatment of vascular BM whole mounts from non-diabetic eyes did not show staining for these proteins. Diabetes-related changes in the protein composition and the biomechanical properties of human retinal vascular basement membranes. Image collected and cropped by CiteAb from the following publication ([//pubmed.ncbi.nlm.nih.gov/29284024/](https://pubmed.ncbi.nlm.nih.gov/29284024/)) licensed under a CC-BY license.



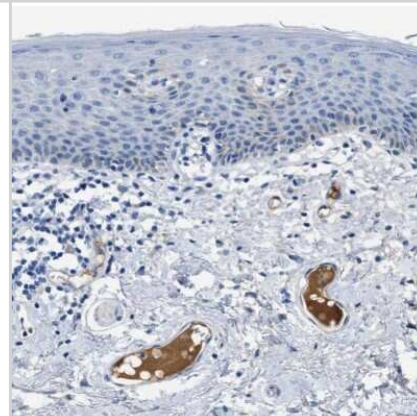
Immunohistochemistry-Paraffin: Apolipoprotein L1 Antibody [NBP1-89033] - Staining of human tonsil shows no positivity in non-germinal center cells as expected.



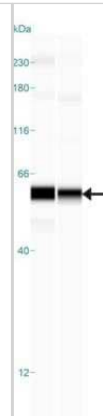
Immunohistochemistry-Paraffin: Apolipoprotein L1 Antibody [NBP1-89033] - Staining of human colon shows positivity in plasma.



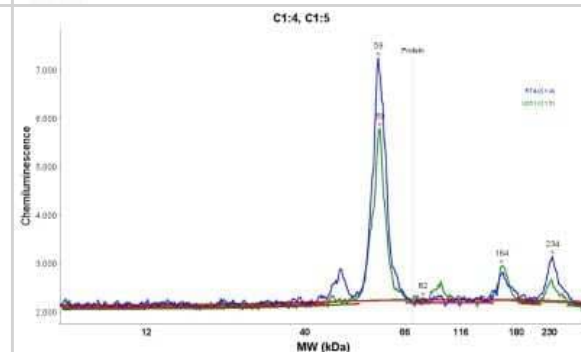
Immunohistochemistry-Paraffin: Apolipoprotein L1 Antibody [NBP1-89033] - Staining of human skin shows positivity in plasma.



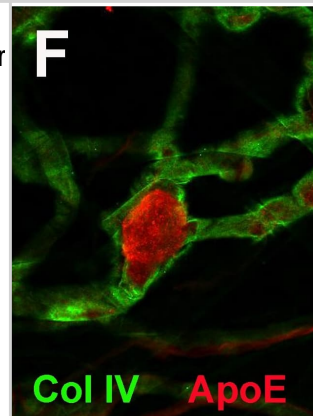
Simple Western: Apolipoprotein L1 Antibody [NBP1-89033] - Simple Western lane view shows a specific band for APOL1 in 0.2 mg/ml of RT-4 (left) and U-251MG sp (right) lysate. This experiment was performed under reducing conditions using the 12-230 kDa separation system.



Simple Western: Apolipoprotein L1 Antibody [NBP1-89033] - Electropherogram image(s) of corresponding Simple Western lane view. Apolipoprotein L1 antibody was used at 1:30 dilution on RT-4 and U-251MG sp lysates(s).



Examples of PNUTS staining: (a) comparison of PNUTS staining in (1) normal and (2) cancerous prostate glands of the same TMA spot. Cancer spots with (b) lack of staining and (c) weak, (d) moderate, and (e) strong staining. Image collected and cropped by CiteAb from the following open publication (<https://pubmed.ncbi.nlm.nih.gov/32377272>), licensed under a CC-BY license. Not internally tested by Novus Biologicals.



## Publications

Halfter W, Moes S, Asgeirsson DO et al. Diabetes-related changes in the protein composition and the biomechanical properties of human retinal vascular basement membranes. PLoS ONE 2017-12-28 [PMID: 29284024] (ICC/IF, Human)

Johnstone DB, Shegokar V, Nihalani D et al. APOL1 Null Alleles from a Rural Village in India Do Not Correlate with Glomerulosclerosis. PLoS One 2012-01-01 [PMID: 23300552]

Madhavan SM, O'Toole JF, Konieczkowski M et al. APOL1 localization in normal kidney and nondiabetic kidney disease. J Am Soc Nephrol 2011-11-01 [PMID: 21997392]



### **Novus Biologicals USA**

10730 E. Briarwood Avenue  
Centennial, CO 80112  
USA  
Phone: 303.730.1950  
Toll Free: 1.888.506.6887  
Fax: 303.730.1966  
nb-customerservice@bio-techne.com

### **Bio-Techne Canada**

21 Canmotor Ave  
Toronto, ON M8Z 4E6  
Canada  
Phone: 905.827.6400  
Toll Free: 855.668.8722  
Fax: 905.827.6402  
canada.inquires@bio-techne.com

### **Bio-Techne Ltd**

19 Barton Lane  
Abingdon Science Park  
Abingdon, OX14 3NB, United Kingdom  
Phone: (44) (0) 1235 529449  
Free Phone: 0800 37 34 15  
Fax: (44) (0) 1235 533420  
info.EMEA@bio-techne.com

### **General Contact Information**

www.novusbio.com  
Technical Support: nb-technical@bio-techne.com  
Orders: nb-customerservice@bio-techne.com  
General: novus@novusbio.com

### **Products Related to NBP1-89033**

---

NBP1-89033PEP	Apolipoprotein L1 Recombinant Protein Antigen
HAF008	Goat anti-Rabbit IgG Secondary Antibody [HRP]
NB7160	Goat anti-Rabbit IgG (H+L) Secondary Antibody [HRP]
NBP2-24891	Rabbit IgG Isotype Control

---

### **Limitations**

This product is for research use only and is not approved for use in humans or in clinical diagnosis. Primary Antibodies are guaranteed for 1 year from date of receipt.

For more information on our 100% guarantee, please visit [www.novusbio.com/guarantee](http://www.novusbio.com/guarantee)

Earn gift cards/discounts by submitting a review: [www.novusbio.com/reviews/submit/NBP1-89033](http://www.novusbio.com/reviews/submit/NBP1-89033)

Earn gift cards/discounts by submitting a publication using this product:  
[www.novusbio.com/publications](http://www.novusbio.com/publications)

