

Product Datasheet

WIPI1 Antibody NBP1-88878

Unit Size: 0.1 ml

Store at 4C short term. Aliquot and store at -20C long term. Avoid freeze-thaw cycles.

www.novusbio.com



technical@novusbio.com

Reviews: 1 Publications: 1

Protocols, Publications, Related Products, Reviews, Research Tools and Images at:
www.novusbio.com/NBP1-88878

Updated 10/31/2021 v.20.1

**Earn rewards for product
reviews and publications.**

Submit a publication at www.novusbio.com/publications

Submit a review at www.novusbio.com/reviews/destination/NBP1-88878



NBP1-88878

WIPI1 Antibody

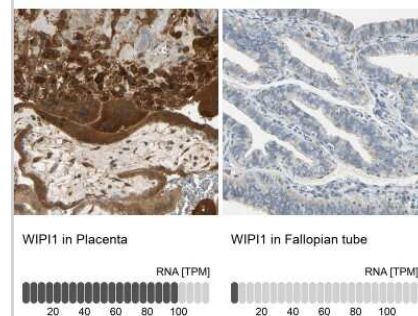
Product Information	
Unit Size	0.1 ml
Concentration	Concentrations vary lot to lot. See vial label for concentration. If unlisted please contact technical services.
Storage	Store at 4C short term. Aliquot and store at -20C long term. Avoid freeze-thaw cycles.
Clonality	Polyclonal
Preservative	0.02% Sodium Azide
Isotype	IgG
Purity	Immunogen affinity purified
Buffer	PBS (pH 7.2) and 40% Glycerol

Product Description	
Host	Rabbit
Gene ID	55062
Gene Symbol	WIPI1
Species	Human, Mouse, Rat
Reactivity Notes	Human reactivity reported in scientific literature (PMID: 26158518).
Immunogen	This antibody was developed against Recombinant Protein corresponding to amino acids: HQDRAFATARLNFSGQRNICTLSTIQKLPRLLVASSSGHLYMYNLDPQDGGEC VLIKTHSLLGSGTTEENKENDLRPSLPQSYAATVARPSASSASTVPGYSEDGG ALRGEVIPEHEFATGPVCLDDENEFPPIILCRG

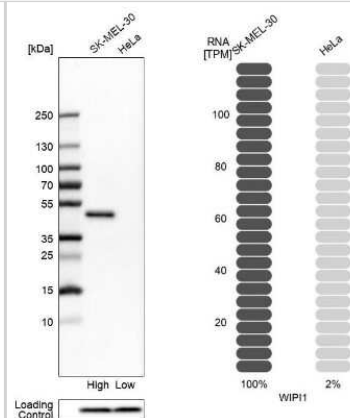
Product Application Details	
Applications	Western Blot, Simple Western, Immunohistochemistry, Immunohistochemistry-Paraffin
Recommended Dilutions	Western Blot 1:100-1:500, Simple Western, Immunohistochemistry 1:20 - 1:50, Immunohistochemistry-Paraffin 1:20-1:50
Application Notes	WB reported in scientific literature (PMID: 26158518). For IHC-Paraffin, HIER pH 6 retrieval is recommended. WIPI1 antibody validated for Simple Western from a verified customer review.

Images

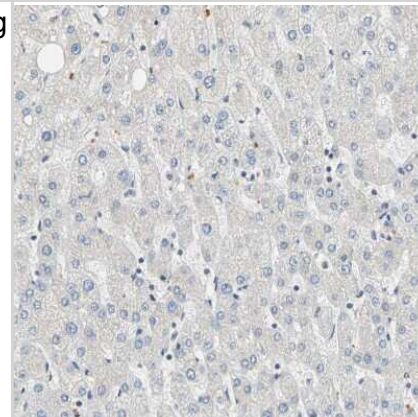
Immunohistochemistry-Paraffin: WIPI1 Antibody [NBP1-88878] - Analysis in human placenta and fallopian tube tissues using NBP1-88878 antibody. Corresponding WIPI1 RNA-seq data are presented for the same tissues.



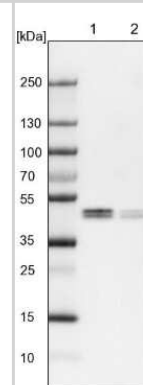
Western Blot: WIPI1 Antibody [NBP1-88878] - Analysis in human cell lines SK-MEL-30 and HeLa using anti-WIPI1 antibody. Corresponding WIPI1 RNA-seq data are presented for the same cell lines. Loading control: anti-COX4I1.



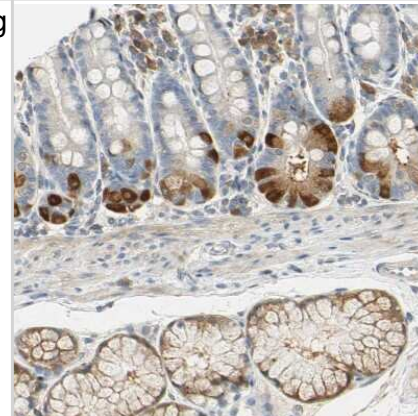
Immunohistochemistry-Paraffin: WIPI1 Antibody [NBP1-88878] - Staining of human liver shows very weak cytoplasmic positivity in hepatocytes.



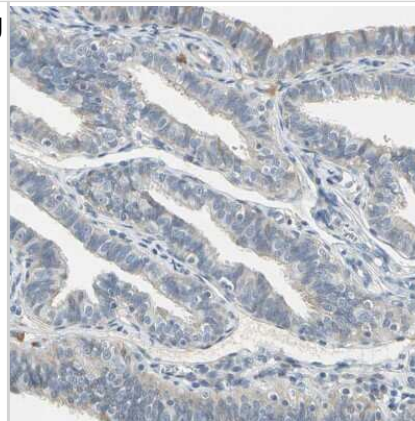
Western Blot: WIPI1 Antibody [NBP1-88878] - Lane 1: NIH-3T3 cell lysate (Mouse embryonic fibroblast cells). Lane 2: NBT-II cell lysate (Rat Wistar bladder tumor cells).



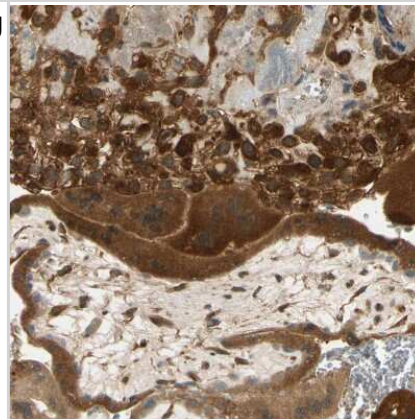
Immunohistochemistry-Paraffin: WIPI1 Antibody [NBP1-88878] - Staining of human duodenum shows moderate cytoplasmic positivity in glandular and enteroendocrine cells.



Immunohistochemistry-Paraffin: WIP11 Antibody [NBP1-88878] - Staining of human fallopian tube shows very weak cytoplasmic positivity in glandular cells.



Immunohistochemistry-Paraffin: WIP11 Antibody [NBP1-88878] - Staining of human placenta shows strong cytoplasmic positivity in trophoblastic and decidual cells.



Publications

Felzen V, Hiebel C, Koziollek-Drechsler I et al. Estrogen receptor alpha regulates non-canonical autophagy that provides stress resistance to neuroblastoma and breast cancer cells and involves BAG3 function. Cell Death Dis 2015-07-09 [PMID: 26158518] (WB, Human)



Novus Biologicals USA

10730 E. Briarwood Avenue
Centennial, CO 80112
USA
Phone: 303.730.1950
Toll Free: 1.888.506.6887
Fax: 303.730.1966
nb-customerservice@bio-techne.com

Bio-Techne Canada

21 Canmotor Ave
Toronto, ON M8Z 4E6
Canada
Phone: 905.827.6400
Toll Free: 855.668.8722
Fax: 905.827.6402
canada.inquires@bio-techne.com

Bio-Techne Ltd

19 Barton Lane
Abingdon Science Park
Abingdon, OX14 3NB, United Kingdom
Phone: (44) (0) 1235 529449
Free Phone: 0800 37 34 15
Fax: (44) (0) 1235 533420
info.EMEA@bio-techne.com

General Contact Information

www.novusbio.com
Technical Support: nb-technical@bio-techne.com
Orders: nb-customerservice@bio-techne.com
General: novus@novusbio.com

Products Related to NBP1-88878

NBP1-88878PEP	WIP11 Recombinant Protein Antigen
HAF008	Goat anti-Rabbit IgG Secondary Antibody [HRP]
NB7160	Goat anti-Rabbit IgG (H+L) Secondary Antibody [HRP]
NBP2-24891	Rabbit IgG Isotype Control

Limitations

This product is for research use only and is not approved for use in humans or in clinical diagnosis. Primary Antibodies are guaranteed for 1 year from date of receipt.

For more information on our 100% guarantee, please visit www.novusbio.com/guarantee

Earn gift cards/discounts by submitting a review: www.novusbio.com/reviews/submit/NBP1-88878

Earn gift cards/discounts by submitting a publication using this product:
www.novusbio.com/publications

