

Product Datasheet

MEF2D Antibody NBP1-85788

Unit Size: 0.1 ml

Store at 4C short term. Aliquot and store at -20C long term. Avoid freeze-thaw cycles.

www.novusbio.com



technical@novusbio.com

Reviews: 2

Protocols, Publications, Related Products, Reviews, Research Tools and Images at:
www.novusbio.com/NBP1-85788

Updated 8/22/2023 v.20.1

**Earn rewards for product
reviews and publications.**

Submit a publication at www.novusbio.com/publications

Submit a review at www.novusbio.com/reviews/destination/NBP1-85788



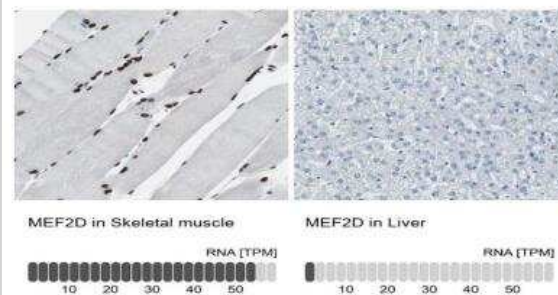
NBP1-85788

MEF2D Antibody

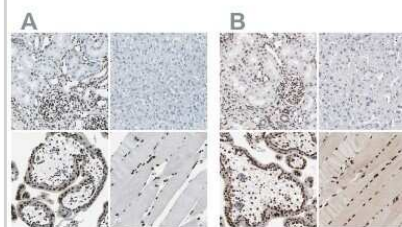
Product Information	
Unit Size	0.1 ml
Concentration	Concentrations vary lot to lot. See vial label for concentration. If unlisted please contact technical services.
Storage	Store at 4C short term. Aliquot and store at -20C long term. Avoid freeze-thaw cycles.
Clonality	Polyclonal
Preservative	0.02% Sodium Azide
Isotype	IgG
Purity	Immunogen affinity purified
Buffer	PBS (pH 7.2) and 40% Glycerol
Product Description	
Host	Rabbit
Gene ID	4209
Gene Symbol	MEF2D
Species	Human, Mouse, Rat
Immunogen	This antibody was developed against Recombinant Protein corresponding to amino acids: QPQPPQQPPQPQQPQPQQPQQPQQPPQQSHLVPVLSNLIPGSPLPHVG AALTVTTHPHISIKSEPVSPSRERSPPPPPAVFPAARPEPGDGLSSPAGGSYE TGDRDDGRGDFGPTLGLLRPAPEPEAEGSVAVKRMRLDTWTL
Product Application Details	
Applications	Western Blot, Simple Western, ELISA, Immunocytochemistry/Immunofluorescence, Immunohistochemistry, Immunohistochemistry-Paraffin
Recommended Dilutions	Western Blot 0.04-0.4 ug/ml, Simple Western reported by internal validation, ELISA, Immunohistochemistry 1:50 - 1:200, Immunocytochemistry/Immunofluorescence 0.25-2 ug/ml, Immunohistochemistry-Paraffin 1:50 - 1:200
Application Notes	For IHC-Paraffin, HIER pH 6 retrieval is recommended. ICC/IF Fixation Permeabilization: Use PFA/Triton X-100. MEF2D antibody validated for ELISA from a verified customer review. In Simple Western internal validation: Mouse Brain lysate as sample; separated by size; antibody dilution of 1:50 - 1:1000; matrix was 12-230 kDa; detected by Chemiluminescence.

Images

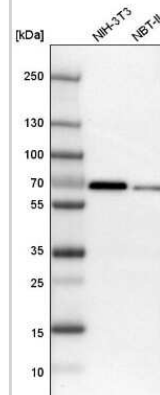
Immunohistochemistry-Paraffin: MEF2D Antibody [NBP1-85788] - Analysis in human skeletal muscle and liver tissues using NBP1-85788 antibody. Corresponding MEF2D RNA-seq data are presented for the same tissues.



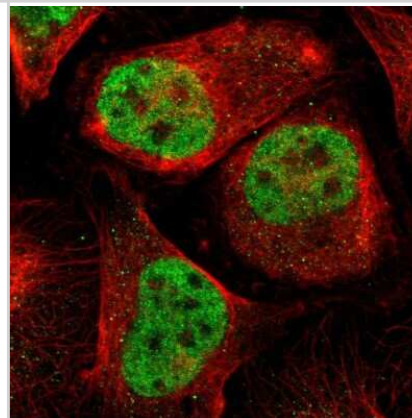
Immunohistochemistry-Paraffin: MEF2D Antibody [NBP1-85788] - Staining of human kidney, liver, placenta and skeletal muscle using Anti-MEF2D antibody NBP1-85788 (A) shows similar protein distribution across tissues to independent antibody NBP1-85795 (B).



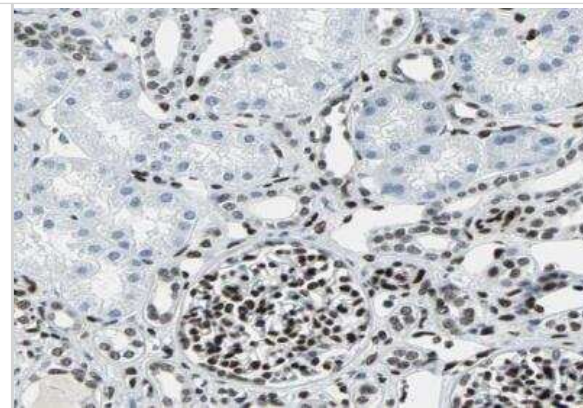
Western Blot: MEF2D Antibody [NBP1-85788] - Analysis in mouse cell line NIH-3T3 and rat cell line NBT-II.



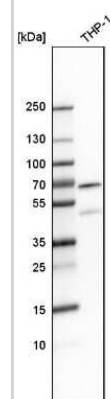
Immunocytochemistry/Immunofluorescence: MEF2D Antibody [NBP1-85788] - Immunofluorescent staining of human cell line U-2 OS shows localization to nucleoplasm. Antibody staining is shown in green.



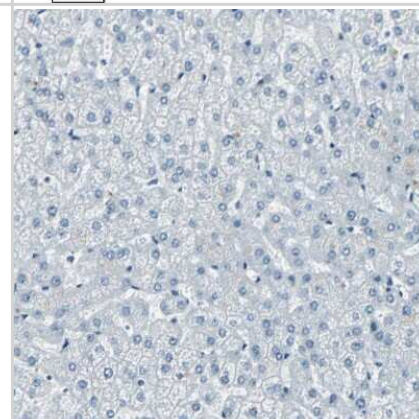
Immunohistochemistry-Paraffin: MEF2D Antibody [NBP1-85788] - Staining of human kidney shows strong nuclear positivity in cells in glomeruli.



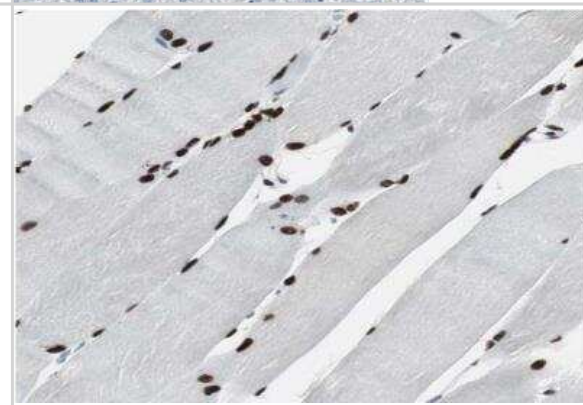
Western Blot: MEF2D Antibody [NBP1-85788] - Analysis in human cell line THP-1.



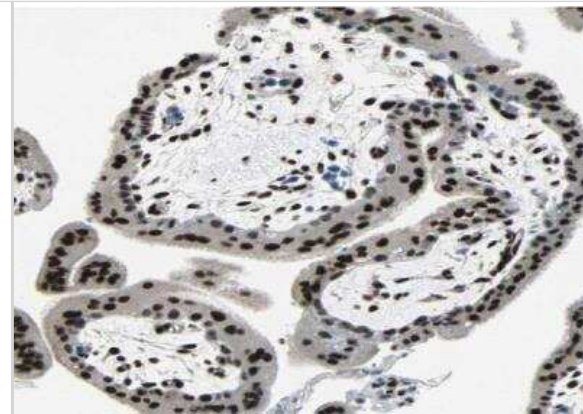
Immunohistochemistry-Paraffin: MEF2D Antibody [NBP1-85788] - Staining of human liver shows no positivity in hepatocytes as expected.



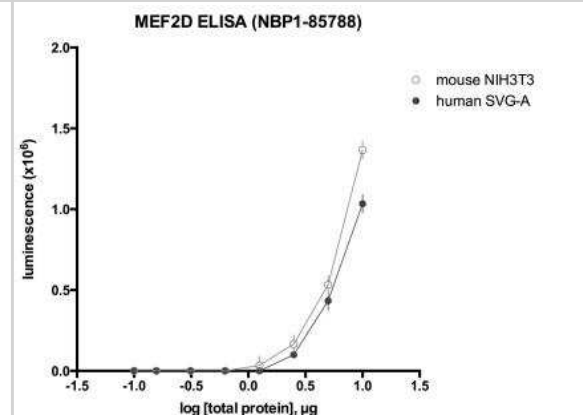
Immunohistochemistry-Paraffin: MEF2D Antibody [NBP1-85788] - Staining of human skeletal muscle shows strong nuclear positivity in myocytes.



Immunohistochemistry-Paraffin: MEF2D Antibody [NBP1-85788] - Staining of human placenta shows strong nuclear positivity in trophoblastic cells.



ELISA: MEF2D Antibody [NBP1-85788] - Lysates from NIH3T3 and SVG-A cells assessed by ELISA, loading the indicated mass of total protein per well. Antibody was diluted 1:250, and used in conjunction with an HRP-conjugated secondary antibody. Signal was detected by luminescence. Image from verified customer review.





Novus Biologicals USA

10730 E. Briarwood Avenue
Centennial, CO 80112
USA
Phone: 303.730.1950
Toll Free: 1.888.506.6887
Fax: 303.730.1966
nb-customerservice@bio-techne.com

Bio-Techne Canada

21 Canmotor Ave
Toronto, ON M8Z 4E6
Canada
Phone: 905.827.6400
Toll Free: 855.668.8722
Fax: 905.827.6402
canada.inquires@bio-techne.com

Bio-Techne Ltd

19 Barton Lane
Abingdon Science Park
Abingdon, OX14 3NB, United Kingdom
Phone: (44) (0) 1235 529449
Free Phone: 0800 37 34 15
Fax: (44) (0) 1235 533420
info.EMEA@bio-techne.com

General Contact Information

www.novusbio.com
Technical Support: nb-technical@bio-techne.com
Orders: nb-customerservice@bio-techne.com
General: novus@novusbio.com

Products Related to NBP1-85788

NBP1-85788PEP	MEF2D Recombinant Protein Antigen
HAF008	Goat anti-Rabbit IgG Secondary Antibody [HRP]
NB7160	Goat anti-Rabbit IgG (H+L) Secondary Antibody [HRP]
NBP2-24891	Rabbit IgG Isotype Control

Limitations

This product is for research use only and is not approved for use in humans or in clinical diagnosis. Primary Antibodies are guaranteed for 1 year from date of receipt.

For more information on our 100% guarantee, please visit www.novusbio.com/guarantee

Earn gift cards/discounts by submitting a review: www.novusbio.com/reviews/submit/NBP1-85788

Earn gift cards/discounts by submitting a publication using this product:
www.novusbio.com/publications

