

Product Datasheet

RRBP1 Antibody NBP1-83957

Unit Size: 0.1 ml

Store at 4C short term. Aliquot and store at -20C long term. Avoid freeze-thaw cycles.

www.novusbio.com



technical@novusbio.com

Publications: 1

Protocols, Publications, Related Products, Reviews, Research Tools and Images at:
www.novusbio.com/NBP1-83957

Updated 6/7/2021 v.20.1

Earn rewards for product
reviews and publications.

Submit a publication at www.novusbio.com/publications

Submit a review at www.novusbio.com/reviews/destination/NBP1-83957



NBP1-83957

RRBP1 Antibody

Product Information	
Unit Size	0.1 ml
Concentration	Concentrations vary lot to lot. See vial label for concentration. If unlisted please contact technical services.
Storage	Store at 4C short term. Aliquot and store at -20C long term. Avoid freeze-thaw cycles.
Clonality	Polyclonal
Preservative	0.02% Sodium Azide
Isotype	IgG
Purity	Immunogen affinity purified
Buffer	PBS (pH 7.2) and 40% Glycerol

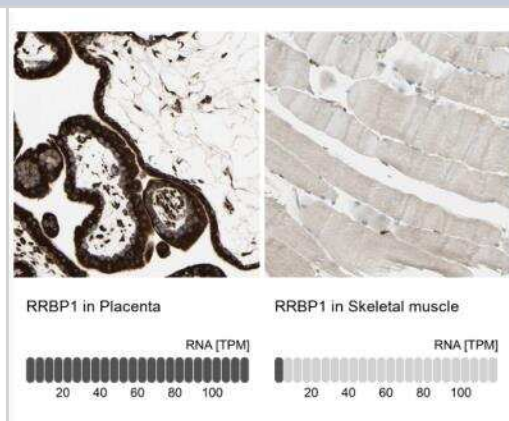
Product Description	
Host	Rabbit
Gene ID	6238
Gene Symbol	RRBP1
Species	Human
Reactivity Notes	Immunogen displays the following percentage of sequence identity for non-tested species: Mouse (85%), Rat (86%)
Immunogen	This antibody was developed against Recombinant Protein corresponding to amino acids: ELHSLQSSSEAEVRSKCEELSGLHGQLQEARAENSQLTERIRSIEALLEAGQAR DAQDVQASQAEADQQQTRLKELESQVSGLEKEAIELREAVEQQKVKNNDLRE K

Product Application Details	
Applications	Western Blot, Simple Western, Immunocytochemistry/Immunofluorescence, Immunohistochemistry, Immunohistochemistry-Paraffin
Recommended Dilutions	Western Blot 0.04 - 0.4 ug/ml, Simple Western 1:200, Immunohistochemistry 1:2500 - 1:5000, Immunocytochemistry/Immunofluorescence 0.25-2 ug/ml, Immunohistochemistry-Paraffin 1:2500 - 1:5000
Application Notes	For IHC-Paraffin, HIER pH 6 retrieval is recommended. ICC/IF, Fixation Permeabilization: Use PFA/Triton X-100. In Simple Western only 10 - 15 uL of the recommended dilution is used per data point. Separated by Size.

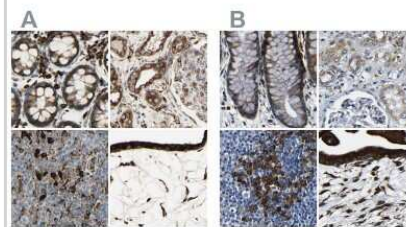


Images

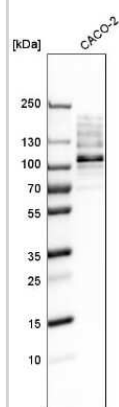
Immunohistochemistry-Paraffin: RRBP1 Antibody [NBP1-83957] - Analysis in human placenta and skeletal muscle tissues. Corresponding RRBP1 RNA-seq data are presented for the same tissues.



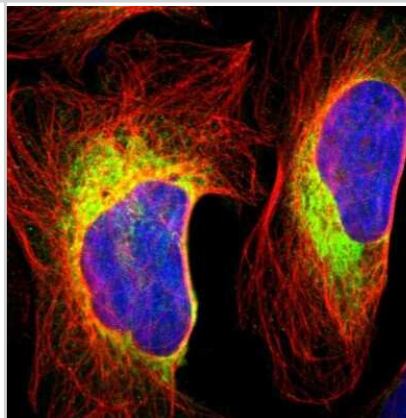
Immunohistochemistry-Paraffin: RRBP1 Antibody [NBP1-83957] - Staining of human colon, kidney, lymph node and placenta using Anti-RRBP1 antibody NBP1-83957 (A) shows similar protein distribution across tissues to independent antibody NBP1-83958 (B).



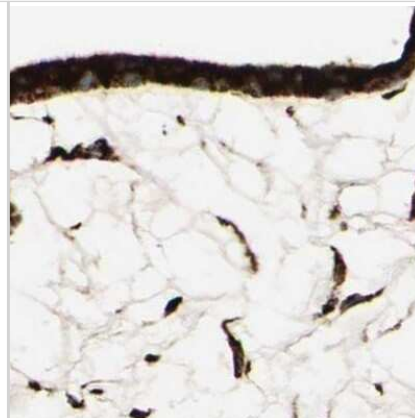
Western Blot: RRBP1 Antibody [NBP1-83957] - Analysis in human cell line CACO-2.



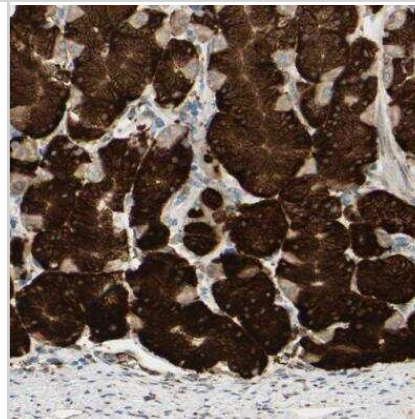
Immunocytochemistry/Immunofluorescence: RRBP1 Antibody [NBP1-83957] - Staining of human cell line U-2 OS shows localization to endoplasmic reticulum. Antibody staining is shown in green.



Immunohistochemistry-Paraffin: RRBP1 Antibody [NBP1-83957] - Staining of human placenta using Anti-RRBP1 antibody NBP1-83957.



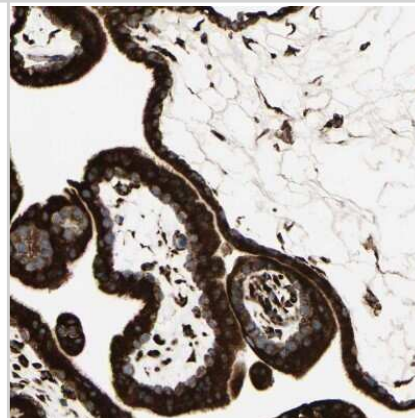
Immunohistochemistry-Paraffin: RRBP1 Antibody [NBP1-83957] - Staining of human stomach shows strong cytoplasmic positivity in glandular cells.



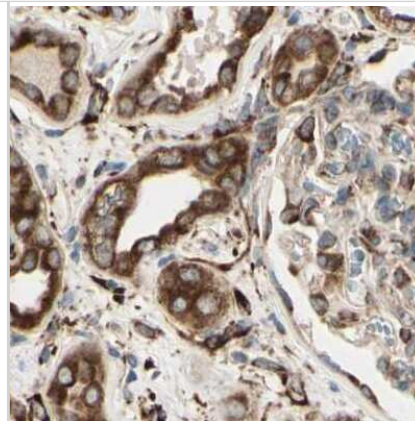
Immunohistochemistry-Paraffin: RRBP1 Antibody [NBP1-83957] - Staining of human skeletal muscle shows weak cytoplasmic positivity in glandular cells.



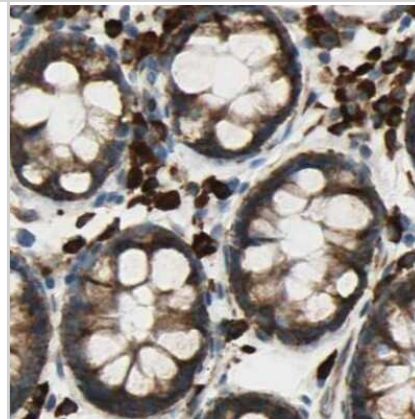
Immunohistochemistry-Paraffin: RRBP1 Antibody [NBP1-83957] - Staining of human placenta shows strong cytoplasmic positivity in trophoblastic cells.



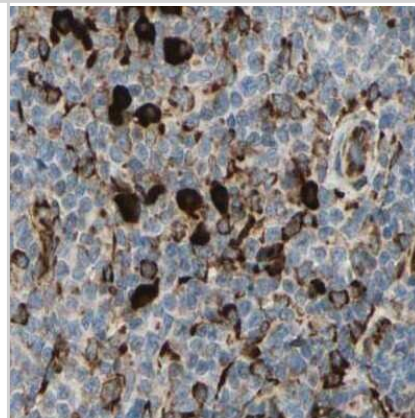
Immunohistochemistry-Paraffin: RRBP1 Antibody [NBP1-83957] - Staining of human kidney.



Immunohistochemistry-Paraffin: RRBP1 Antibody [NBP1-83957] - Staining of human colon.



Immunohistochemistry-Paraffin: RRBP1 Antibody [NBP1-83957] - Staining of human lymph node.

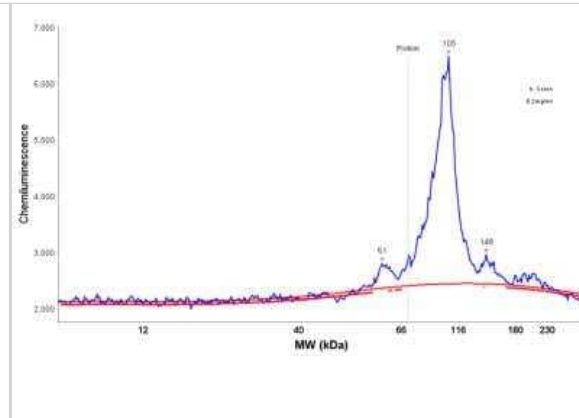


Simple Western: RRBP1 Antibody [NBP1-83957] - Simple Western lane view shows a specific band for RRBP1 in 0.2 mg/ml of h. Colon lysate(s). This experiment was performed under reducing conditions using the 12-230 kDa separation system.

kDa
230-
180-
116-
66-
40-
12-

A Western blot image showing a single, prominent band at approximately 116 kDa, corresponding to RRBP1. The molecular weight markers are indicated on the left side of the blot.

Simple Western: RRBP1 Antibody [NBP1-83957] - Electropherogram image of the corresponding Simple Western lane view. RRBP1 antibody was used at 1:200 dilution on h. Colon lysate(s) respectively.



Publications

Telikicherla D, Marimuthu A, Kashyap MK et al. Overexpression of ribosome binding protein 1 (RRBP1) in breast cancer. Clin Proteomics 2012-06-01 [PMID: 22709790]



Novus Biologicals USA

10730 E. Briarwood Avenue
Centennial, CO 80112
USA
Phone: 303.730.1950
Toll Free: 1.888.506.6887
Fax: 303.730.1966
nb-customerservice@bio-techne.com

Bio-Techne Canada

21 Canmotor Ave
Toronto, ON M8Z 4E6
Canada
Phone: 905.827.6400
Toll Free: 855.668.8722
Fax: 905.827.6402
canada.inquires@bio-techne.com

Bio-Techne Ltd

19 Barton Lane
Abingdon Science Park
Abingdon, OX14 3NB, United Kingdom
Phone: (44) (0) 1235 529449
Free Phone: 0800 37 34 15
Fax: (44) (0) 1235 533420
info.EMEA@bio-techne.com

General Contact Information

www.novusbio.com
Technical Support: nb-technical@bio-techne.com
Orders: nb-customerservice@bio-techne.com
General: novus@novusbio.com

Products Related to NBP1-83957

NBP1-83957PEP	RRBP1 Recombinant Protein Antigen
HAF008	Goat anti-Rabbit IgG Secondary Antibody [HRP]
NB7160	Goat anti-Rabbit IgG (H+L) Secondary Antibody [HRP]
NBP2-24891	Rabbit IgG Isotype Control

Limitations

This product is for research use only and is not approved for use in humans or in clinical diagnosis. Primary Antibodies are guaranteed for 1 year from date of receipt.

For more information on our 100% guarantee, please visit www.novusbio.com/guarantee

Earn gift cards/discounts by submitting a review: www.novusbio.com/reviews/submit/NBP1-83957

Earn gift cards/discounts by submitting a publication using this product:
www.novusbio.com/publications

