

Product Datasheet

SATB2 Antibody NBP1-83619

Unit Size: 0.1 ml

Store at 4C short term. Aliquot and store at -20C long term. Avoid freeze-thaw cycles.

www.novusbio.com



technical@novusbio.com

Publications: 4

Protocols, Publications, Related Products, Reviews, Research Tools and Images at:
www.novusbio.com/NBP1-83619

Updated 5/24/2022 v.20.1

Earn rewards for product
reviews and publications.

Submit a publication at www.novusbio.com/publications

Submit a review at www.novusbio.com/reviews/destination/NBP1-83619



NBP1-83619

SATB2 Antibody

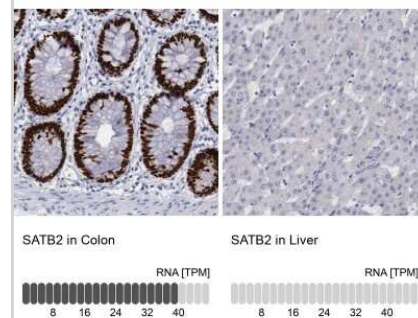
Product Information	
Unit Size	0.1 ml
Concentration	Concentrations vary lot to lot. See vial label for concentration. If unlisted please contact technical services.
Storage	Store at 4C short term. Aliquot and store at -20C long term. Avoid freeze-thaw cycles.
Clonality	Polyclonal
Preservative	0.02% Sodium Azide
Isotype	IgG
Purity	Immunogen affinity purified
Buffer	PBS (pH 7.2) and 40% Glycerol

Product Description	
Host	Rabbit
Gene Symbol	SATB2
Species	Human
Reactivity Notes	Reactivity reported in scientific literature (PMID: 21898641)
Immunogen	This antibody was developed against Recombinant Protein corresponding to amino acids: VSQAVFARVAFNRTQGLLSEILRKEEDPRTASQSLLVNL RAMQNFLNLPEVER DRIYQDERERSMNPVSMVSSASSSPSSSRTPQAKTSTPTTDLPIKVDGANINI TAAIYDEIQQEMKRAK

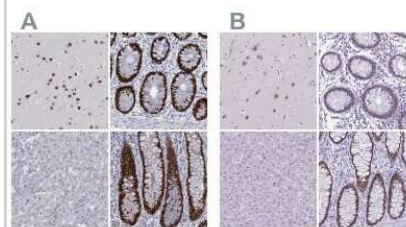
Product Application Details	
Applications	Western Blot, Simple Western, Immunohistochemistry, Immunohistochemistry-Paraffin
Recommended Dilutions	Western Blot 0.04-0.4 ug/ml, Simple Western 1:50, Immunohistochemistry 1:1000 - 1:2500, Immunohistochemistry-Paraffin 1:1000 - 1:2500
Application Notes	For IHC-Paraffin, HIER pH 6 retrieval is recommended. In Simple Western only 10 - 15 uL of the recommended dilution is used per data point. Separated by Size-Wes, Sally Sue/Peggy Sue.

Images

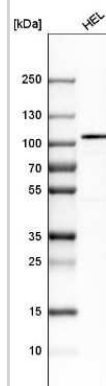
Immunohistochemistry-Paraffin: SATB2 Antibody [NBP1-83619] - Analysis in human colon and liver tissues. Corresponding SATB2 RNA-seq data are presented for the same tissues.



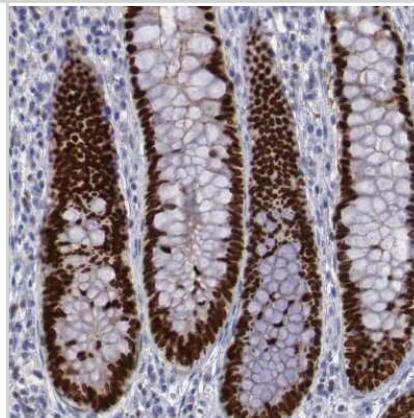
Immunohistochemistry-Paraffin: SATB2 Antibody [NBP1-83619] - Staining of human cerebral cortex, colon, liver and rectum using Anti-SATB2 antibody NBP1-83619 (A) shows similar protein distribution across tissues to independent antibody NBP1-92365 (B).



Western Blot: SATB2 Antibody [NBP1-83619] - Analysis in human cell line HELA.



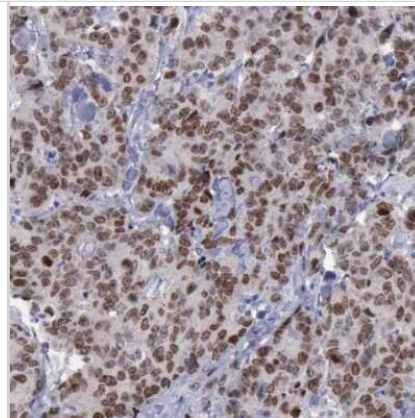
Immunohistochemistry-Paraffin: SATB2 Antibody [NBP1-83619] - Staining of human rectum shows strong nuclear positivity in glandular cells.



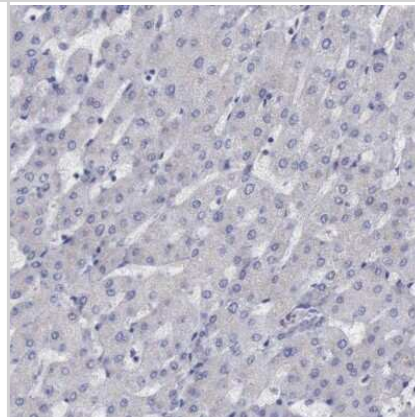
Immunohistochemistry-Paraffin: SATB2 Antibody [NBP1-83619] - Immunohistochemical staining of human cerebral cortex shows strong nuclear positivity in neuronal cells.



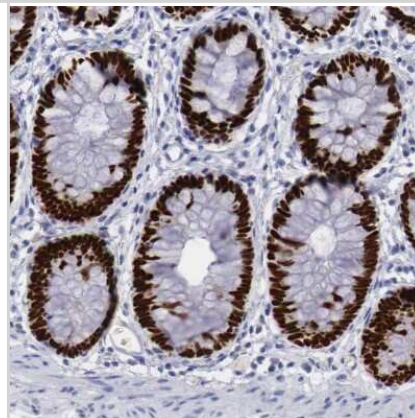
Immunohistochemistry-Paraffin: SATB2 Antibody [NBP1-83619] - Immunohistochemical staining of human colorectal cancer shows strong nuclear positivity in tumor cells.



Immunohistochemistry-Paraffin: SATB2 Antibody [NBP1-83619] - Immunohistochemical staining of human liver shows no positivity as expected.



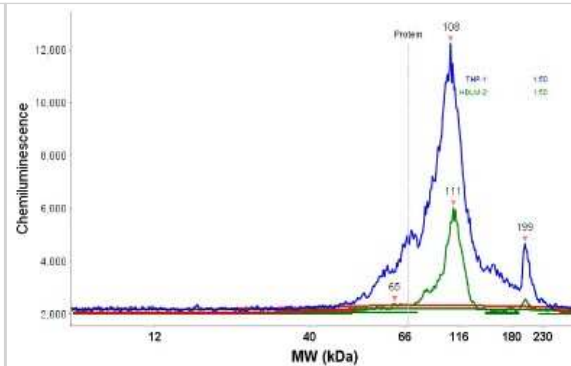
Immunohistochemistry-Paraffin: SATB2 Antibody [NBP1-83619] - Staining of human colon shows strong nuclear positivity in glandular cells.



Simple Western: SATB2 Antibody [NBP1-83619] - Simple Western lane view shows a specific band for SATB2 in 0.1 mg/ml of THP1 (left), HDLM2 (right) lysate. This experiment was performed under reducing conditions using the 12-230 kDa separation system.



Simple Western: SATB2 Antibody [NBP1-83619] - Electropherogram image(s) of corresponding Simple Western lane view. SATB2 antibody was used at 1:50 dilution on THP1 and HDLM2 lysate(s).



Publications

Hjelm B, Forsstrom B, Igel U et al. Generation of monospecific antibodies based on affinity capture of polyclonal antibodies. *Protein Sci* 2011-11-01 [PMID: 21898641]

Magnusson K, de Wit M, Brennan DJ et al. SATB2 in combination with cytokeratin 20 identifies over 95% of all colorectal carcinomas. *Am J Surg Pathol* 2011-07-01 [PMID: 21677534]

Wensman H, Goransson H, Leuchowius KJ et al. Extensive expression of craniofacial related homeobox genes in canine mammary sarcomas. *Breast Cancer Res Treat* 2009-11-01 [PMID: 19048371]

Ek S, Andreasson U, Hober S et al. From gene expression analysis to tissue microarrays: a rational approach to identify therapeutic and diagnostic targets in lymphoid malignancies. *Mol Cell Proteomics* 2006-06-01 [PMID: 16524965]



Novus Biologicals USA

10730 E. Briarwood Avenue
Centennial, CO 80112
USA
Phone: 303.730.1950
Toll Free: 1.888.506.6887
Fax: 303.730.1966
nb-customerservice@bio-techne.com

Bio-Techne Canada

21 Canmotor Ave
Toronto, ON M8Z 4E6
Canada
Phone: 905.827.6400
Toll Free: 855.668.8722
Fax: 905.827.6402
canada.inquires@bio-techne.com

Bio-Techne Ltd

19 Barton Lane
Abingdon Science Park
Abingdon, OX14 3NB, United Kingdom
Phone: (44) (0) 1235 529449
Free Phone: 0800 37 34 15
Fax: (44) (0) 1235 533420
info.EMEA@bio-techne.com

General Contact Information

www.novusbio.com
Technical Support: nb-technical@bio-techne.com
Orders: nb-customerservice@bio-techne.com
General: novus@novusbio.com

Products Related to NBP1-83619

NBP1-83619PEP	SATB2 Recombinant Protein Antigen
HAF008	Goat anti-Rabbit IgG Secondary Antibody [HRP]
NB7160	Goat anti-Rabbit IgG (H+L) Secondary Antibody [HRP]
NBP2-24891	Rabbit IgG Isotype Control

Limitations

This product is for research use only and is not approved for use in humans or in clinical diagnosis. Primary Antibodies are guaranteed for 1 year from date of receipt.

For more information on our 100% guarantee, please visit www.novusbio.com/guarantee

Earn gift cards/discounts by submitting a review: www.novusbio.com/reviews/submit/NBP1-83619

Earn gift cards/discounts by submitting a publication using this product:
www.novusbio.com/publications

