

Product Datasheet

PA28 Activator alpha Subunit/PSME1 Antibody NBP1-83121

Unit Size: 0.1 ml

Store at 4C short term. Aliquot and store at -20C long term. Avoid freeze-thaw cycles.

www.novusbio.com



technical@novusbio.com

Publications: 4

Protocols, Publications, Related Products, Reviews, Research Tools and Images at:
www.novusbio.com/NBP1-83121

Updated 8/22/2023 v.20.1

Earn rewards for product
reviews and publications.

Submit a publication at www.novusbio.com/publications

Submit a review at www.novusbio.com/reviews/destination/NBP1-83121



NBP1-83121**PA28 Activator alpha Subunit/PSME1 Antibody**

Product Information	
Unit Size	0.1 ml
Concentration	Concentrations vary lot to lot. See vial label for concentration. If unlisted please contact technical services.
Storage	Store at 4C short term. Aliquot and store at -20C long term. Avoid freeze-thaw cycles.
Clonality	Polyclonal
Preservative	0.02% Sodium Azide
Isotype	IgG
Purity	Immunogen affinity purified
Buffer	PBS (pH 7.2) and 40% Glycerol

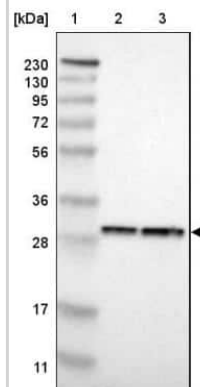
Product Description	
Host	Rabbit
Gene ID	5720
Gene Symbol	PSME1
Species	Human
Immunogen	This antibody was developed against Recombinant Protein corresponding to amino acids: AVQEKVFELMTSLHTKLEGFHTQISKYFSEKDAVTKAAKQPHVGDYRQLVHE LDEAEYRDIRLMVMEIRNAYAVLYDIILKNFEKLLKPRGETKGMIIY

Product Application Details	
Applications	Western Blot, Simple Western, Immunohistochemistry, Immunohistochemistry-Paraffin
Recommended Dilutions	Western Blot 0.04-0.4 ug/ml, Simple Western reported by internal validation, Immunohistochemistry 1:1000 - 1:2500, Immunohistochemistry-Paraffin 1:1000 - 1:2500
Application Notes	IHC reported in scientific literature (PMID: 25918340). For IHC-Paraffin, HIER pH 6 retrieval is recommended. In Simple Western internal validation: Human Multiple Myeloma as sample; separated by size; antibody dilution of 1:50; observed molecular weight was 37 kDa; detected by Chemiluminescence.

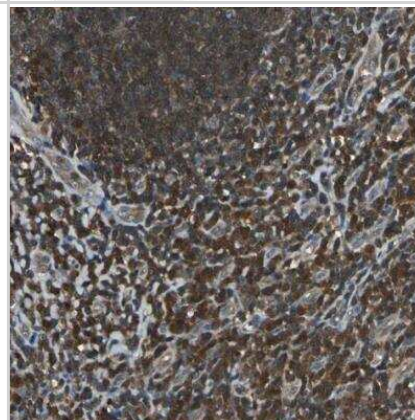


Images

Western Blot: PA28 Activator alpha Subunit/PSME1 Antibody [NBP1-83121] - Lane 1: Marker [kDa] 230, 130, 95, 72, 56, 36, 28, 17, 11. Lane 2: Human cell line RT-4. Lane 3: Human cell line U-251MG sp



Immunohistochemistry-Paraffin: PA28 Activator alpha Subunit/PSME1 Antibody [NBP1-83121] - Staining of human tonsil shows strong cytoplasmic positivity in germinal and non-germinal center cells.



Publications

Mamrosh JL, Sherman DJ, Cohen JR et al. Quantitative measurement of the requirement of diverse protein degradation pathways in MHC class I peptide presentation *Science advances* 2023-06-23 [PMID: 37352349] (WB, Human)

Misiewicz-Krzeminska, I, de Ramon, C Et al. Quantitative expression of Ikaros, IRF4, and PSMD10 proteins predicts survival in VRD-treated patients with multiple myeloma. *Blood Adv* 2020-12-08 [PMID: 33284947] (WB, Human)

Artyomov MN, Munk A, Gorvel L et al. Modular expression analysis reveals functional conservation between human Langerhans cells and mouse cross-priming dendritic cells *J. Exp. Med.* 2015-04-27 [PMID: 25918340] (IF/IHC, Human)

Kamper P, Ludvigsen M, Bendix K et al. Proteomic analysis identifies galectin-1 as a predictive biomarker for relapsed/refractory disease in classical Hodgkin lymphoma. *Blood* 2011-06-01 [PMID: 21505194]



Novus Biologicals USA

10730 E. Briarwood Avenue
Centennial, CO 80112
USA
Phone: 303.730.1950
Toll Free: 1.888.506.6887
Fax: 303.730.1966
nb-customerservice@bio-techne.com

Bio-Techne Canada

21 Canmotor Ave
Toronto, ON M8Z 4E6
Canada
Phone: 905.827.6400
Toll Free: 855.668.8722
Fax: 905.827.6402
canada.inquires@bio-techne.com

Bio-Techne Ltd

19 Barton Lane
Abingdon Science Park
Abingdon, OX14 3NB, United Kingdom
Phone: (44) (0) 1235 529449
Free Phone: 0800 37 34 15
Fax: (44) (0) 1235 533420
info.EMEA@bio-techne.com

General Contact Information

www.novusbio.com
Technical Support: nb-technical@bio-techne.com
Orders: nb-customerservice@bio-techne.com
General: novus@novusbio.com

Products Related to NBP1-83121

NBP1-83121PEP	PA28 Activator alpha Subunit/PSME1 Recombinant Protein Antigen
HAF008	Goat anti-Rabbit IgG Secondary Antibody [HRP]
NB7160	Goat anti-Rabbit IgG (H+L) Secondary Antibody [HRP]
NBP2-24891	Rabbit IgG Isotype Control

Limitations

This product is for research use only and is not approved for use in humans or in clinical diagnosis. Primary Antibodies are guaranteed for 1 year from date of receipt.

For more information on our 100% guarantee, please visit www.novusbio.com/guarantee

Earn gift cards/discounts by submitting a review: www.novusbio.com/reviews/submit/NBP1-83121

Earn gift cards/discounts by submitting a publication using this product:
www.novusbio.com/publications

