

# Product Datasheet

## SLC16A3 Antibody NBP1-81251

Unit Size: 0.1 ml

Store at 4C short term. Aliquot and store at -20C long term. Avoid freeze-thaw cycles.

[www.novusbio.com](http://www.novusbio.com)



[technical@novusbio.com](mailto:technical@novusbio.com)

**Reviews: 1 Publications: 6**

Protocols, Publications, Related Products, Reviews, Research Tools and Images at:  
[www.novusbio.com/NBP1-81251](http://www.novusbio.com/NBP1-81251)

Updated 1/8/2024 v.20.1

**Earn rewards for product  
reviews and publications.**

Submit a publication at [www.novusbio.com/publications](http://www.novusbio.com/publications)

Submit a review at [www.novusbio.com/reviews/destination/NBP1-81251](http://www.novusbio.com/reviews/destination/NBP1-81251)



**NBP1-81251**

SLC16A3 Antibody

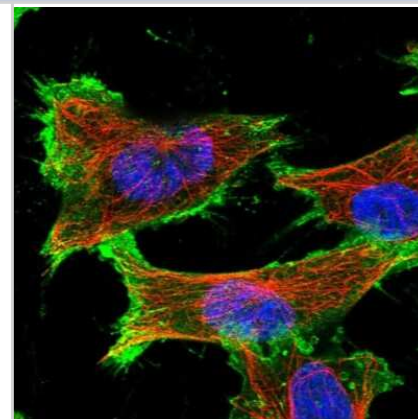
Product Information	
<b>Unit Size</b>	0.1 ml
<b>Concentration</b>	Concentrations vary lot to lot. See vial label for concentration. If unlisted please contact technical services.
<b>Storage</b>	Store at 4C short term. Aliquot and store at -20C long term. Avoid freeze-thaw cycles.
<b>Clonality</b>	Polyclonal
<b>Preservative</b>	0.02% Sodium Azide
<b>Isotype</b>	IgG
<b>Purity</b>	Immunogen affinity purified
<b>Buffer</b>	PBS (pH 7.2) and 40% Glycerol

Product Description	
<b>Host</b>	Rabbit
<b>Gene ID</b>	9123
<b>Gene Symbol</b>	SLC16A3
<b>Species</b>	Human, Mouse
<b>Reactivity Notes</b>	Use in Mouse reported in scientific publication (PMID: 32400970). Rat (88%).
<b>Immunogen</b>	This antibody was developed against Recombinant Protein corresponding to amino acids: AEEEKLVKPPADSGVDLREVEHFLKAEPEKNGEVVHTPETS

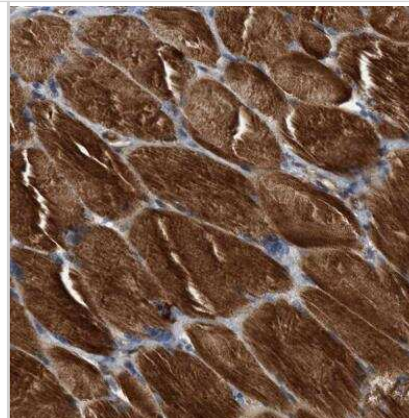
Product Application Details	
<b>Applications</b>	Western Blot, Simple Western, Immunoblotting, Immunocytochemistry/Immunofluorescence, Immunohistochemistry, Immunohistochemistry-Frozen, Immunohistochemistry-Paraffin
<b>Recommended Dilutions</b>	Western Blot -Reported in scientific literature (PMID:33212210) , Simple Western 1:250, Immunohistochemistry 1:200 - 1:500, Immunocytochemistry/Immunofluorescence 0.25-2 ug/ml, Immunohistochemistry-Paraffin 1:200 - 1:500, Immunohistochemistry-Frozen - Reactivity reported in (PMID:24692237), Immunoblotting -Reactivity reported in (PMID: 28978054)
<b>Application Notes</b>	Simple Western only 10 - 15 uL of the recommended dilution is used per data point. Separated by Size-Wes, Sally Sue/Peggy Sue.

**Images**

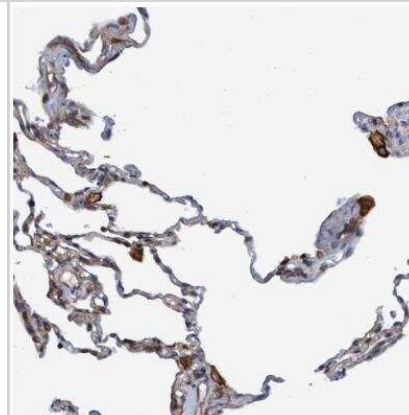
Immunocytochemistry/Immunofluorescence: SLC16A3 Antibody [NBP1-81251] - Staining of human cell line U-251 MG shows localization to plasma membrane. Antibody staining is shown in green.



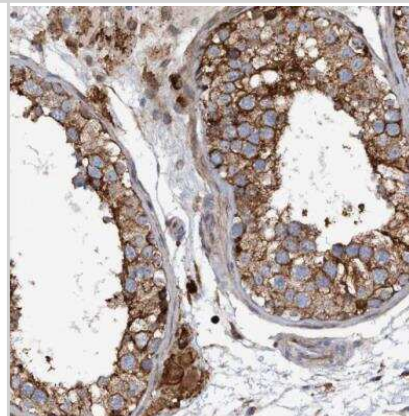
Immunohistochemistry-Paraffin: SLC16A3 Antibody [NBP1-81251] - Staining of human skeletal muscle shows strong cytoplasmic positivity in myocytes.



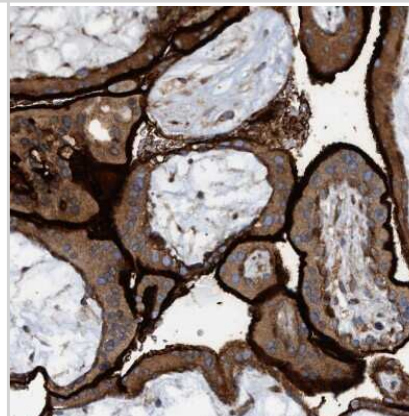
Immunohistochemistry-Paraffin: SLC16A3 Antibody [NBP1-81251] - Staining of human lung shows strong membranous positivity in macrophages.



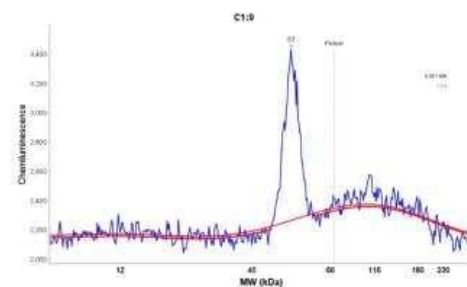
Immunohistochemistry-Paraffin: SLC16A3 Antibody [NBP1-81251] - Staining of human testis shows strong membranous positivity in cells in seminiferous ducts.



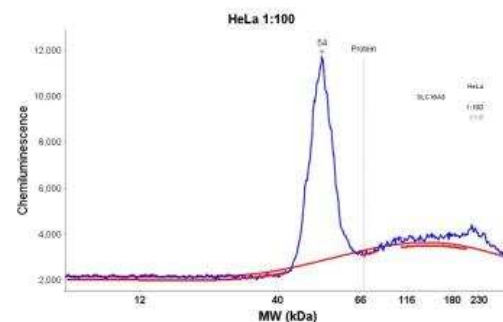
Immunohistochemistry-Paraffin: SLC16A3 Antibody [NBP1-81251] - Staining of human placenta shows strong membranous positivity in trophoblastic cells.



Simple Western: SLC16A3 Antibody [NBP1-81251] - Simple Western: SLC16A3 Antibody [NBP1-81251] - Electropherogram image(s) of corresponding Simple Western lane view. SLC16A3 antibody was used at 1:250 dilution on U-251MG lysates(s)



Simple Western: SLC16A3 Antibody [NBP1-81251] - Simple Western: SLC16A3 Antibody [NBP1-81251] - Electropherogram image(s) of corresponding Simple Western lane view. SLC16A3 antibody was used at 1:250 dilution on HeLa lysates(s).



## Publications

Lai YC, Hsieh CY, Lu KY Et al. Monitoring Early Glycolytic Flux Alterations Following Radiotherapy in Cancer and Immune Cells: Hyperpolarized Carbon-13 Magnetic Resonance Imaging Study Metabolites 2021-08-06 [PMID: 34436459] (WB, Human)

Murakami R, Chiba Y, Nishi N et al. Immunoreactivity of receptor and transporters for lactate located in astrocytes and epithelial cells of choroid plexus of human brain Neurosci Lett 2020-11-16 [PMID: 33212210] (IF/IHC, WB, ICC/IF, Human)

### Details:

Immunofluorescence analysis and immunohistochemical analysis of human brain samples. Western blot analysis performed in HeLa and HT-29.

Lahiguera A, HyroSSovA P, Figueras A et al. Tumors defective in homologous recombination rely on oxidative metabolism: relevance to treatments with PARP inhibitors EMBO Mol Med 2020-05-13 [PMID: 32400970] (IHC-P, Mouse)

Ilina Elena I, Armento Angela, Sanchez Leticia Garea et al. Effects of soluble CPE on glioma cell migration are associated with mTOR activation and enhanced glucose flux. Oncotarget 2017-06-27 [PMID: 28978054] (IB, Human)

Silagi ES, Schoepflin ZR, Seifert EL et al. Bicarbonate Recycling by HIF-1-dependent Carbonic Anhydrase isoforms 9 and 12 is Critical in Maintaining Intracellular pH and Viability of Nucleus Pulposus Cells J. Bone Miner. Res. 2017-09-23 [PMID: 28940640] (Human)

Nijland PG, Michailidou I, Witte ME et al. Cellular distribution of glucose and monocarboxylate transporters in human brain white matter and multiple sclerosis lesions. Glia 2014-04-01 [PMID: 24692237] (IHC-Fr, Human)



### **Novus Biologicals USA**

10730 E. Briarwood Avenue  
Centennial, CO 80112  
USA  
Phone: 303.730.1950  
Toll Free: 1.888.506.6887  
Fax: 303.730.1966  
nb-customerservice@bio-techne.com

### **Bio-Techne Canada**

21 Canmotor Ave  
Toronto, ON M8Z 4E6  
Canada  
Phone: 905.827.6400  
Toll Free: 855.668.8722  
Fax: 905.827.6402  
canada.inquires@bio-techne.com

### **Bio-Techne Ltd**

19 Barton Lane  
Abingdon Science Park  
Abingdon, OX14 3NB, United Kingdom  
Phone: (44) (0) 1235 529449  
Free Phone: 0800 37 34 15  
Fax: (44) (0) 1235 533420  
info.EMEA@bio-techne.com

### **General Contact Information**

www.novusbio.com  
Technical Support: nb-technical@bio-techne.com  
Orders: nb-customerservice@bio-techne.com  
General: novus@novusbio.com

### **Products Related to NBP1-81251**

---

NBP1-81251PEP	SLC16A3 Recombinant Protein Antigen
HAF008	Goat anti-Rabbit IgG Secondary Antibody [HRP]
NB7160	Goat anti-Rabbit IgG (H+L) Secondary Antibody [HRP]
NBP2-24891	Rabbit IgG Isotype Control

---

### **Limitations**

This product is for research use only and is not approved for use in humans or in clinical diagnosis. Primary Antibodies are guaranteed for 1 year from date of receipt.

For more information on our 100% guarantee, please visit [www.novusbio.com/guarantee](http://www.novusbio.com/guarantee)

Earn gift cards/discounts by submitting a review: [www.novusbio.com/reviews/submit/NBP1-81251](http://www.novusbio.com/reviews/submit/NBP1-81251)

Earn gift cards/discounts by submitting a publication using this product:  
[www.novusbio.com/publications](http://www.novusbio.com/publications)

