

Product Datasheet

RelA/NFkB p65 [p Ser276] Antibody NBP1-77807

Unit Size: 0.1 ml

Store at -20C short term. Aliquot and store at -80C long term. Avoid freeze-thaw cycles.

www.novusbio.com



technical@novusbio.com

Publications: 4

Protocols, Publications, Related Products, Reviews, Research Tools and Images at:
www.novusbio.com/NBP1-77807

Updated 7/23/2023 v.20.1

Earn rewards for product
reviews and publications.

Submit a publication at www.novusbio.com/publications

Submit a review at www.novusbio.com/reviews/destination/NBP1-77807



NBP1-77807

RelA/NFkB p65 [p Ser276] Antibody

Product Information	
Unit Size	0.1 ml
Concentration	Please see the vial label for concentration. If unlisted please contact technical services.
Storage	Store at -20C short term. Aliquot and store at -80C long term. Avoid freeze-thaw cycles.
Clonality	Polyclonal
Preservative	0.01% Sodium Azide
Isotype	Serum
Purity	Delipidation and Defibrination
Buffer	Antiserum

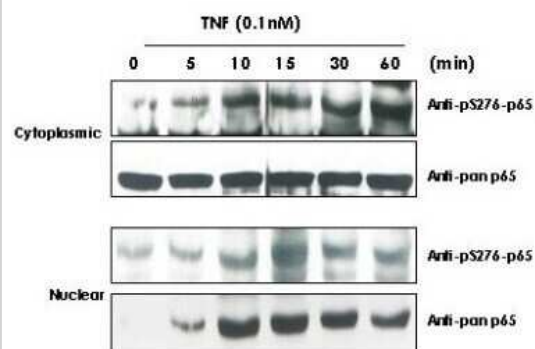
Product Description	
Description	<p>This antibody was prepared from monospecific antiserum by delipidation and defibrination</p> <p>Store vial at -20C prior to opening. Aliquot contents and freeze at -20C or below for extended storage. Avoid cycles of freezing and thawing. Centrifuge product if not completely clear after standing at room temperature. This product is stable for several weeks at 4C as an undiluted liquid. Dilute only prior to immediate use.</p>
Host	Rabbit
Gene ID	5970
Gene Symbol	RELA
Species	Human
Reactivity Notes	Reactivity with non-phosphorylated p65 is minimal. Cross reactivity with pS276 phosphorylated p65 from mouse, rat or other species has not been determined.
Specificity/Sensitivity	This phospho specific polyclonal antibody is specific for phosphorylated pS276 human p65. Reactivity with non-phosphorylated p65 is minimal. Cross reactivity with pS276 phosphorylated p65 from mouse, rat or other species has not been determined.
Immunogen	RelA/NFkB p65 peptide corresponding to an internal region near phospho Serine 276 of the human protein conjugated to Keyhole Limpet Hemocyanin (KLH). (Uniprot: Q04206)

Product Application Details	
Applications	Western Blot, Simple Western, ELISA, Immunohistochemistry, Immunohistochemistry-Paraffin
Recommended Dilutions	Western Blot 1:1000-1:5000, Simple Western, ELISA 1:10000-1:30000, Immunohistochemistry 1:200-1:800, Immunohistochemistry-Paraffin 1:10-1:500
Application Notes	<p>This product reacts human pS276 p65 and shows minimal reactivity by western blot with non-phosphorylated p65 and minimal reactivity by ELISA against the non-phosphorylated form of the immunizing peptide. A 1:500 dilution has been used for staining p65 in human kidney tissue by IHC. Tissue was formalin fixed and paraffin embedded. Although not tested, this antibody is likely functional in immunoprecipitation. All conditions must be user optimized.</p> <p>Simple Western reported by an internal validation. Separated by Charge, antibody dilution of 1:50.</p>



Images

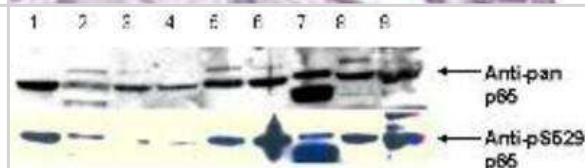
Western Blot: RelA/NFkB p65 [p Ser276] Antibody [NBP1-77807] - TNF Induces phosphorylation of p65 in KBM-5 cells. Cytoplasmic and nuclear protein lysates prepared after 0, 5, 10, 15, 30 and 60 minutes of 0.1 nM TNF treatment of KBM-5 cells shows inducible phosphorylation using phospho specific polyclonal anti-human pS276 p65. Pan reactive anti p65 was used as a control to show the presence of total p65 in both the cytoplasmic and nuclear extracts. Phosphorylation of p65 occurs after approximately 10 min of TNF exposure. Migration of phosphorylated p65 into the nucleus occurs within a similar time frame. HRP conjugated Gt-anti-Rabbit IgG was used to develop the blot using a chemi-luminescent detection method.



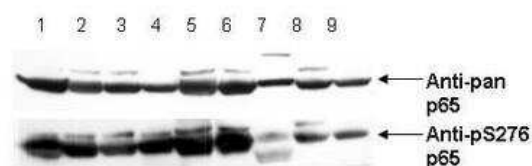
Immunohistochemistry: RelA/NFkB p65 [p Ser276] Antibody [NBP1-77807] - Diluted to 1:500 to detect p65 in human kidney tissue. Tissue was formalin fixed and paraffin embedded. No pre-treatment of sample was required. The image shows the localization of antibody as the precipitated red signal, with a hematoxylin purple nuclear counter stain.



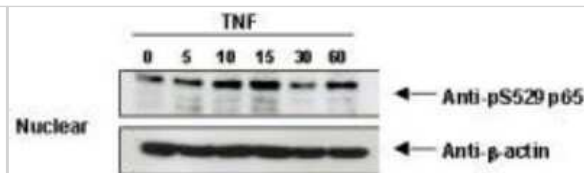
Western Blot: RelA/NFkB p65 [p Ser276] Antibody [NBP1-77807] - pS529 shows phospho p65 staining in carcinoma cells.



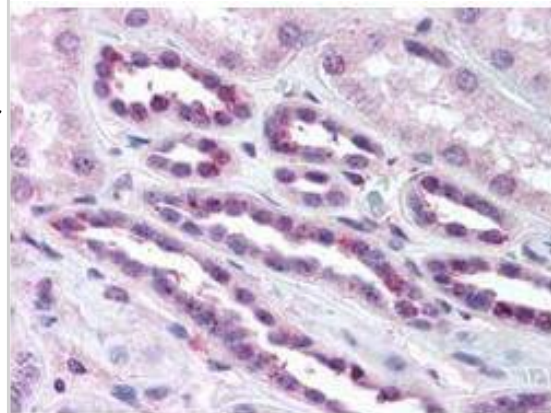
Western Blot: RelA/NFkB p65 [p Ser276] Antibody [NBP1-77807] - pS276 shows phospho p65 staining in carcinoma cells. Western blot of total protein lysates from various human head and neck tumors shows phospho p65 staining in tumor cell lines using phospho specific polyclonal anti-human pS276 p65. Lanes 1-6 contain protein lysates from human squamal carcinoma cell lines. Lane 7 is a protein lysate from a primary culture of human keratinocytes and does not show significant levels of phosphorylated p65. Lane 8 contains protein lysate from ATCC SCC9 cells (also a head and neck squamal carcinoma). Lane 9 contains lysate from EGF-induced human derived A431 cells. Lane 10 (not shown) contains a molecular weight standard. Concurrent staining with anti-beta microtubulin (not shown) was used to confirm equal protein loading in all lanes. HRP conjugated Gt-anti-Rabbit IgG was used to develop the blot using a chemiluminescent detection method.



Western Blot: RelA/NFκB p65 [p Ser276] Antibody [NBP1-77807] - TNF Induces phosphorylation of p65 in KBM-5 cells.



anti-p65 pS276 antibody was diluted 1:500 to detect p65 in human kidney tissue. Tissue was formalin fixed and paraffin embedded. No pre-treatment of sample was required. The image shows the localization of antibody as the precipitated red signal, with a hematoxylin purple nuclear counter stain.



Publications

Manna SK, Aggarwal RS, Sethi G et al. CXCL5 promotes prostate cancer progression. *Neoplasia* 2008-03-01 [PMID: 18320069]

Sheldon M, Rice DS, D'Arcangelo G et al. Toll-like receptor 2 mediates apolipoprotein CIII-induced monocyte activation. *Circ Res* 2008-12-01 [PMID: 18974386]

Ashikawa K, Majumdar S, Banerjee S et al. Piceatannol inhibits TNF-induced NF-kappaB activation and NF-kappaB-mediated gene expression through suppression of IkappaBalpha kinase and p65 phosphorylation. *J Immunol.* 2002-12-01 [PMID: 12444159]

Wang X, Liu X, Xue L et al. Hunting for serine 276-phosphorylated p65. *J Biomed Biotechnol* 2010-01-01 [PMID: 20204068]



Novus Biologicals USA

10730 E. Briarwood Avenue
Centennial, CO 80112
USA
Phone: 303.730.1950
Toll Free: 1.888.506.6887
Fax: 303.730.1966
nb-customerservice@bio-techne.com

Bio-Techne Canada

21 Canmotor Ave
Toronto, ON M8Z 4E6
Canada
Phone: 905.827.6400
Toll Free: 855.668.8722
Fax: 905.827.6402
canada.inquires@bio-techne.com

Bio-Techne Ltd

19 Barton Lane
Abingdon Science Park
Abingdon, OX14 3NB, United Kingdom
Phone: (44) (0) 1235 529449
Free Phone: 0800 37 34 15
Fax: (44) (0) 1235 533420
info.EMEA@bio-techne.com

General Contact Information

www.novusbio.com
Technical Support: nb-technical@bio-techne.com
Orders: nb-customerservice@bio-techne.com
General: novus@novusbio.com

Products Related to NBP1-77807

NBP1-97002	RelA/NFkB p65 Antibody Blocking Peptide
HAF008	Goat anti-Rabbit IgG Secondary Antibody [HRP]
NB7160	Goat anti-Rabbit IgG (H+L) Secondary Antibody [HRP]
NBP2-24987-5ug	Recombinant Human RelA/NFkB p65 Protein

Limitations

This product is for research use only and is not approved for use in humans or in clinical diagnosis. Primary Antibodies are guaranteed for 1 year from date of receipt.

For more information on our 100% guarantee, please visit www.novusbio.com/guarantee

Earn gift cards/discounts by submitting a review: www.novusbio.com/reviews/submit/NBP1-77807

Earn gift cards/discounts by submitting a publication using this product:
www.novusbio.com/publications

