

# Product Datasheet

## CRY1 Antibody NBP1-69080

Unit Size: 100 ul

Store at 4C short term. Aliquot and store at -20C long term. Avoid freeze-thaw cycles.

[www.novusbio.com](http://www.novusbio.com)



[technical@novusbio.com](mailto:technical@novusbio.com)

### Publications: 1

Protocols, Publications, Related Products, Reviews, Research Tools and Images at:  
[www.novusbio.com/NBP1-69080](http://www.novusbio.com/NBP1-69080)

Updated 11/6/2023 v.20.1

Earn rewards for product  
reviews and publications.

Submit a publication at [www.novusbio.com/publications](http://www.novusbio.com/publications)

Submit a review at [www.novusbio.com/reviews/destination/NBP1-69080](http://www.novusbio.com/reviews/destination/NBP1-69080)



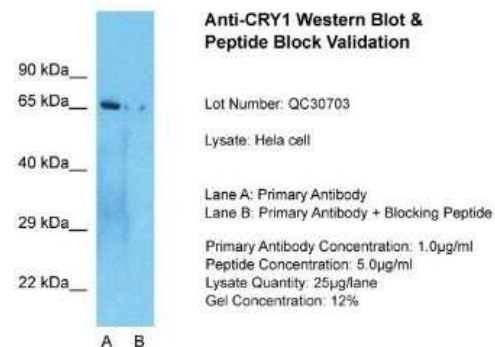
**NBP1-69080**

## CRY1 Antibody

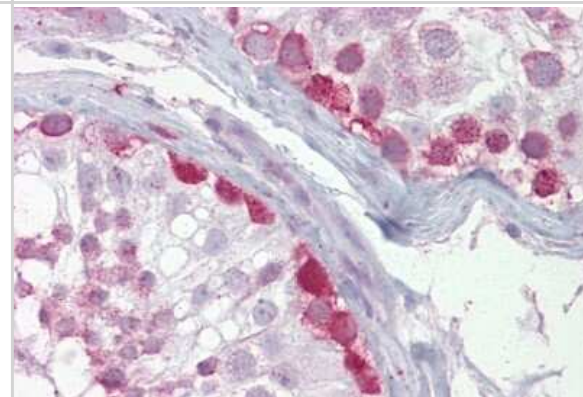
Product Information	
<b>Unit Size</b>	100 ul
<b>Concentration</b>	0.5 mg/ml
<b>Storage</b>	Store at 4C short term. Aliquot and store at -20C long term. Avoid freeze-thaw cycles.
<b>Clonality</b>	Polyclonal
<b>Preservative</b>	0.09% Sodium Azide
<b>Isotype</b>	IgG
<b>Purity</b>	Affinity purified
<b>Buffer</b>	PBS, 2% Sucrose
<b>Target Molecular Weight</b>	64 kDa
Product Description	
<b>Description</b>	The addition of 50% glycerol is optional for those storing this antibody at -20C and not aliquoting smaller units. However, please note that glycerol may interrupt some downstream antibody applications and should be added with caution.
<b>Host</b>	Rabbit
<b>Gene ID</b>	1407
<b>Gene Symbol</b>	CRY1
<b>Species</b>	Human, Amphibian
<b>Reactivity Notes</b>	Amphibian reactivity reported in a verified customer review.
<b>Immunogen</b>	Synthetic peptides corresponding to CRY1 (cryptochrome 1, photolyase-like). The peptide sequence was selected from the N terminal of CRY1 (NP_004066). Peptide sequence KRFQTLISKMEPLEIPVETITSEVIEKCTTPLSDDHDEKYGVPSLEELGF. The peptide sequence for this immunogen was taken from within the described region.
Product Application Details	
<b>Applications</b>	Western Blot, Simple Western, Immunohistochemistry, Immunohistochemistry-Frozen, Immunohistochemistry-Paraffin
<b>Recommended Dilutions</b>	Western Blot 1.0 ug/ml, Simple Western reported by internal validation, Immunohistochemistry 1:10-1:500, Immunohistochemistry-Paraffin 5 ug/ml, Immunohistochemistry-Frozen Validated for Immunohistochemistry-Frozen from a verified customer review.
<b>Application Notes</b>	In Simple Western internal validation: HeLa lysate at 0.5 mg/ml as sample; separated by size; antibody dilution of 1:50; observed molecular weight was 61 kDa; matrix was 12-230 kDa; detected by Chemiluminescence.

## Images

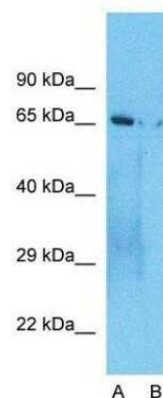
Western Blot: CRY1 Antibody [NBP1-69080] - Sample Tissue: HeLa Whole cell, Lane A: Primary Antibody, Lane B: Primary Antibody + Blocking Peptide, Primary Antibody Concentration: 1ug/ml, Peptide Concentration: 5ug/ml, Lysate Quantity: 25ug/lane, Gel Concentration: 0.12%



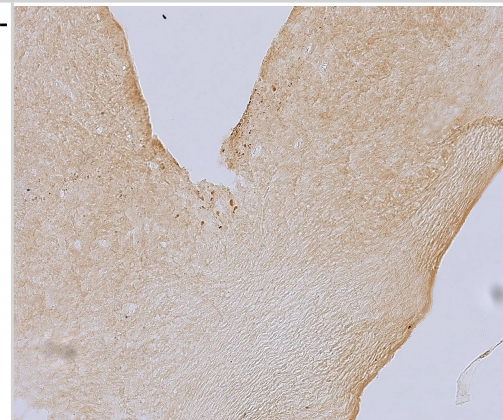
Immunohistochemistry-Paraffin: CRY1 Antibody [NBP1-69080] - Human testis tissue at an antibody concentration of 5ug/ml.



Western Blot: CRY1 Antibody [NBP1-69080] - Sample Tissue: HeLa Whole cell. Lane A: Primary Antibody Lane B: Primary Antibody + Blocking.



Immunohistochemistry-Frozen: Rabbit Polyclonal CRY1 Antibody [NBP1-69080] - DAB staining in SCN of green treefrog, 10X. Primary antibody dilution - 1:1000. Image from a verified customer review.



## Publications

Lee YY, Cal-Kayitmazbatir S, Francey LJ et al. duper is a null mutation of Cryptochrome 1 in Syrian hamsters Proceedings of the National Academy of Sciences of the United States of America 2022-05-03 [PMID: 35471909] (IHC-Fr, WB, Syrian Hamster)



### Novus Biologicals USA

10730 E. Briarwood Avenue  
Centennial, CO 80112  
USA

Phone: 303.730.1950

Toll Free: 1.888.506.6887

Fax: 303.730.1966

[nb-customerservice@bio-techne.com](mailto:nb-customerservice@bio-techne.com)

### Bio-Techne Canada

21 Canmotor Ave  
Toronto, ON M8Z 4E6  
Canada

Phone: 905.827.6400

Toll Free: 855.668.8722

Fax: 905.827.6402

[canada.inquires@bio-techne.com](mailto:canada.inquires@bio-techne.com)

### Bio-Techne Ltd

19 Barton Lane  
Abingdon Science Park  
Abingdon, OX14 3NB, United Kingdom

Phone: (44) (0) 1235 529449

Free Phone: 0800 37 34 15

Fax: (44) (0) 1235 533420

[info.EMEA@bio-techne.com](mailto:info.EMEA@bio-techne.com)

### General Contact Information

[www.novusbio.com](http://www.novusbio.com)

Technical Support: [nb-technical@bio-techne.com](mailto:nb-technical@bio-techne.com)

Orders: [nb-customerservice@bio-techne.com](mailto:nb-customerservice@bio-techne.com)

General: [novus@novusbio.com](mailto:novus@novusbio.com)

### Products Related to NBP1-69080

NBP1-69080PEP

CRY1 Antibody Blocking Peptide

HAF008

Goat anti-Rabbit IgG Secondary Antibody [HRP]

NB7160

Goat anti-Rabbit IgG (H+L) Secondary Antibody [HRP]

NBP2-24891

Rabbit IgG Isotype Control

### Limitations

This product is for research use only and is not approved for use in humans or in clinical diagnosis. Primary Antibodies are guaranteed for 1 year from date of receipt.

For more information on our 100% guarantee, please visit [www.novusbio.com/guarantee](http://www.novusbio.com/guarantee)

Earn gift cards/discounts by submitting a review: [www.novusbio.com/reviews/submit/NBP1-69080](http://www.novusbio.com/reviews/submit/NBP1-69080)

Earn gift cards/discounts by submitting a publication using this product:

[www.novusbio.com/publications](http://www.novusbio.com/publications)

