

Product Datasheet

GFP Antibody NB600-303

Unit Size: 0.05 ml

Store at -20C short term. Aliquot and store at -80C long term. Avoid freeze-thaw cycles.

www.novusbio.com



technical@novusbio.com

Reviews: 3 Publications: 54

Protocols, Publications, Related Products, Reviews, Research Tools and Images at:
www.novusbio.com/NB600-303

Updated 12/20/2023 v.20.1

**Earn rewards for product
reviews and publications.**

Submit a publication at www.novusbio.com/publications

Submit a review at www.novusbio.com/reviews/destination/NB600-303



NB600-303

GFP Antibody

Product Information	
Unit Size	0.05 ml
Concentration	Please see the vial label for concentration. If unlisted please contact technical services.
Storage	Store at -20C short term. Aliquot and store at -80C long term. Avoid freeze-thaw cycles.
Clonality	Polyclonal
Preservative	0.01% Sodium Azide
Isotype	IgG
Purity	Immunogen affinity purified
Buffer	0.02 M Potassium Phosphate, 0.15 M Sodium Chloride, pH 7.2
Product Description	
Description	<p>This product was prepared from monospecific antiserum by immunoaffinity chromatography using Green Fluorescent Protein (<i>Aequorea victoria</i>) coupled to agarose beads followed by solid phase adsorption(s) to remove any unwanted reactivities.</p> <p>Store vial at -20C prior to opening. Aliquot contents and freeze at -20C or below for extended storage. Avoid cycles of freezing and thawing. Centrifuge product if not completely clear after standing at room temperature. This product is stable for several weeks at 4C as an undiluted liquid. Dilute only prior to immediate use.</p>
Host	Rabbit
Species	Non-species specific
Immunogen	The immunogen is a Green Fluorescent Protein (GFP) fusion protein corresponding to the full length amino acid sequence (246aa) derived from the jellyfish <i>Aequorea victoria</i> .
Product Application Details	
Applications	Western Blot, Simple Western, ELISA, Electron Microscopy, Flow Cytometry, Immunocytochemistry/ Immunofluorescence, Immunohistochemistry, Immunohistochemistry-Frozen, Immunohistochemistry-Paraffin, Immunoprecipitation, Chromatin Immunoprecipitation (ChIP)
Recommended Dilutions	Western Blot 1:1000-1:3000, Simple Western, Flow Cytometry 1:10 - 1:1000, ELISA 1:10000-1:40000, Immunohistochemistry 1:10 - 1:500, Immunocytochemistry/ Immunofluorescence 1:10 - 1:500, Immunoprecipitation 1:10 - 1:500, Immunohistochemistry-Paraffin 1:10 - 1:500, Immunohistochemistry-Frozen 1:10 - 1:500, Electron Microscopy, Chromatin Immunoprecipitation (ChIP)



Application Notes

This product has been tested in ELISA and western blot. Expect ~27kDa band. Although not tested, this antibody is suitable for IP, IF, ChIP, and Flow. Specific conditions for reactivity should be optimized by the end user.

Immunoprecipitation reported successful by customer review.

Immunohistochemistry-Paraffin (PMID: 21311774)
Immunocytochemistry/Immunofluorescence was reported in scientific literature.

Use in Flow Cytometry reported in scientific literature (PMID: 23903657).

Use in Electron Microscopy reported in scientific literature (PMID 25538186).

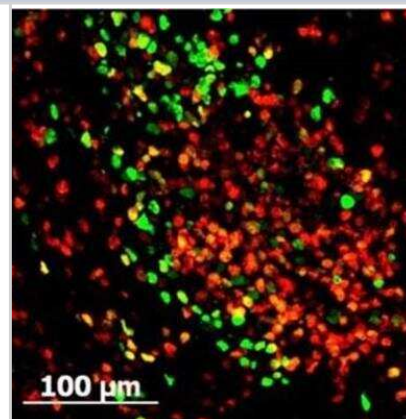
Use in Immunohistochemistry-Frozen reported in multiple pieces of scientific literature.

Use in chromatin immunoprecipitation reported in scientific literature (PMID 28174757).

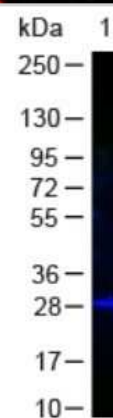
Simple Western reported by an internal validation. Separated by Size-Jess/Wes, Sally Sue/Peggy Sue; matrix was 12-230 kDa.

Images

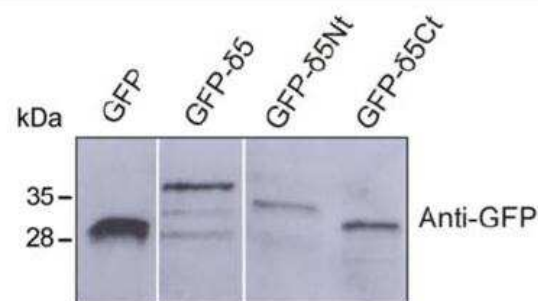
Immunocytochemistry/Immunofluorescence: GFP Antibody [NB600-303] - Analysis of FITC conjugate of NB600-303. Staining of mouse spleen cells Tissue: spleen cells infected with MHV68-H2bYFP. As seen in: Collins CM, Speck SH (2012) Tracking Murine Gammaherpesvirus 68 Infection of Germinal Center B Cells.



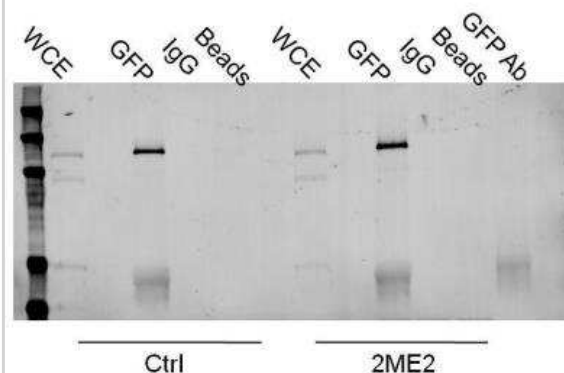
Western Blot: GFP Antibody [NB600-303] - Analysis using the FITC conjugate of NB600-303. Detection of Lane 1: GFP. Load: 50 ug per lane. Primary antibody: none. Secondary antibody: Fluorescein conjugated Anti-GFP at 1:1000 for 60 min at RT. Block: 1% BSA-TTBS for 30 min at RT. Predicted/Observed size: 28 kDa, 28 kDa.



Western Blot: GFP Antibody [NB600-303] - WB analysis of GFP in various lysates. Image courtesy of product review by Emilie Leclerc.



Immunoprecipitation: GFP Antibody [NB600-303] - IP analysis of GFP in HeLa cell lysate. Image courtesy of anonymous customer review.



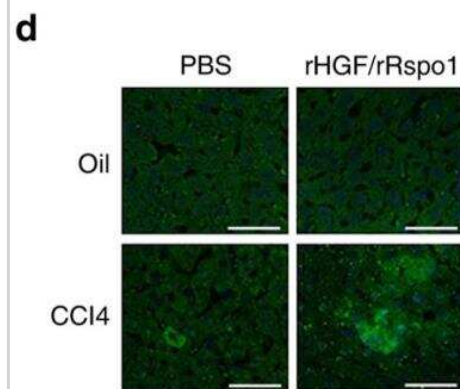
Western Blot: GFP Antibody [NB600-303] - Analysis of GFP HRP expression in HeLa/GFP cell lysate.

250>
150>
100>
75>
50>
37>
25>
20>
15>
10>

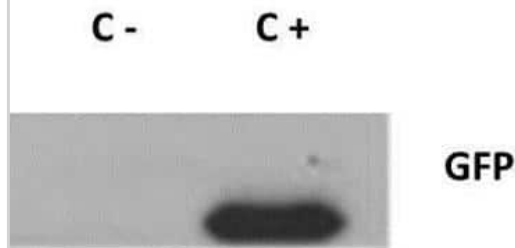
Western Blot: GFP Antibody [NB600-303] - Analysis using Biotin conjugate of NB600-303. Lane 1: 50ng of GFP. Lane 2: none. Primary antibody: none. Secondary antibody: Anti- Biotin Conjugated secondary antibody was used at 1:5000 in Blocking Buffer for Fluorescent Western Blotting for 45 min at RT. HRP Streptavidin was used at 1:40,000 in incubated with blocking buffer for 30 min at 20C. Block: 5% Blotto 30 min at 20C. Predicted/Observed size: 28 kDa for GFP. Other band(s): none.



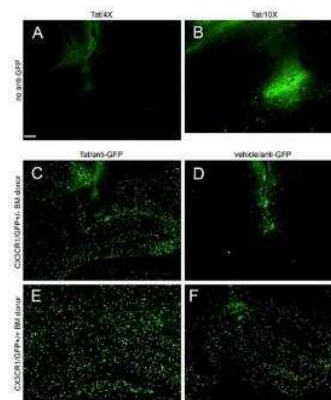
Immunohistochemistry: GFP Antibody [NB600-303] - Eight-week-old Lgr5-GFP mice were injected with CCL4 and rHGF or/and rRspo1 proteins (0.1 ug/mice/time), as indicated in a, Lgr5 expression was measured using an immunofluorescent assay with anti-GFP antibody. Image collected and cropped by CiteAb from the following publication (<https://www.nature.com/articles/s41467-017-01341-6>) licensed under a CC-BY license.



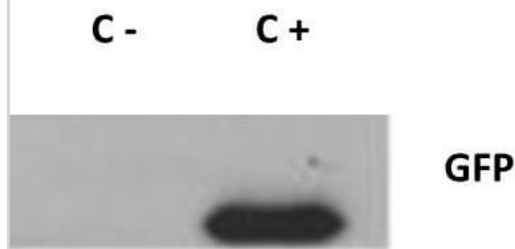
Western Blot: GFP Antibody [NB600-303] - Lane 1: 293FT cells transfected with CDK4 dominant negative. Lane 2: 293FT cells positive control. Load: 25 ug per lane. Primary antibody: GFP antibody at 1:400 for overnight at 4C. Secondary antibody: IRDye800 (TM) rabbit secondary antibody at 1:10,000 for 45 min at RT. Block: 5% BLOTTO overnight at 4C. Predicted/Observed size: 27 kDa for GFP.



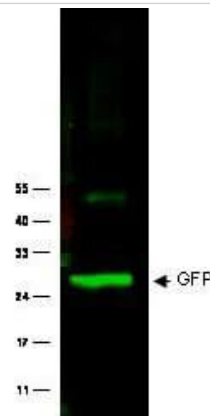
Immunocytochemistry/Immunofluorescence: GFP Antibody [NB600-303]



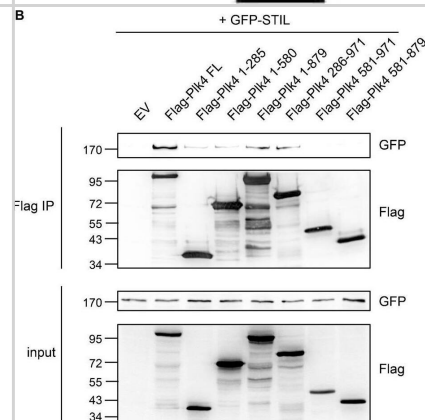
Western Blot of GFP Antibody. Lane 1: 293FT cells transfected with CDK4 dominant negative. Lane 2: 293FT cells positive control. Load: 25 ug per lane. Primary antibody: GFP antibody at 1:400 for overnight at 4C. Secondary antibody: IRDye800(TM) rabbit secondary antibody at 1:10,000 for 45 min at RT. Block: 5% BLOTTO overnight at 4C. Predicted/Observed size: 27 kDa for GFP.



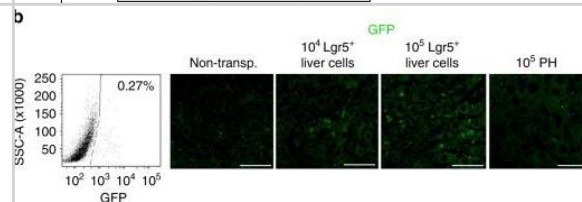
Western Blot of Rabbit anti-GFP antibody. Lane 1: Wild type GFP (0.1 ug) was used to spike HeLa whole cell lysate. Lane 2: none. Load: 30 ug per lane. Primary antibody: GFP antibody at 1:1000 for overnight at 4C. Secondary antibody: IRDye800(TM) Goat-a-Rabbit IgG [H&L] MX10 () at 1:10,000 for 45 min at RT. Block: 5% BLOTTO in PBS overnight at 4C. Predicted/Observed size: 27 kDa for epitope tag GFP. Other band(s): none.



The polo-boxes of Plk4 are not sufficient to mediate STIL binding. (A) Scheme of Flag-Plk4 fragments. (B) After overexpression of Flag-Plk4 fragments (A) and GFP-STIL in HEK293T cells, cell lysates were subjected to immunoprecipitations using anti-Flag antibodies. Coprecipitation of GFP-STIL with Flag-Plk4 fragments was detected by western blotting using anti-GFP and anti-Flag antibodies.



Lgr5+ liver stem cells transplantation decreased liver fibrosis. b) Lgr5+ cells were isolated from Lgr5-GFP mice treated with CCL4 by FACS assay for transplantation (left). The liver Lgr5 expression was stained using anti-GFP antibody in mice with Lgr5+ cells or PH transplantation (right) on day 40. n = 10 mice, scale bars, 200 um. Image collected and cropped by CiteAb from the following publication (<https://pubmed.ncbi.nlm.nih.gov/29079780>), licensed under a CC-BY licence.



Publications

Jakob U, Oleson B, Bhattra J et al. Early life changes in histone landscape protect against age-associated amyloid toxicities through HSF-1 dependent regulation of lipid metabolism Research Square 2023-04-20 (WB)

Details:

Dilutions: 1:2000

Niekamp P, Scharte F, Sokoya T et al. Ca²⁺-activated sphingomyelin scrambling and turnover mediate ESCRT-independent lysosomal repair Nature communications [PMID: 35388011]

Ke, X, Do, D C Et al. Ras homolog family member A/Rho-associated protein kinase 1 signaling modulates lineage commitment of mesenchymal stem cells in asthmatic patients through lymphoid enhancer-binding factor 1. J Allergy Clin Immunol 2019-04-01 [PMID: 30194990] (IF/IHC)

Thakkar PV, Kita K, Castillo UD Et al. CLIP-170S is a microtubule +TIP variant that confers resistance to taxanes by impairing drug-target engagement Developmental cell 2021-10-12 [PMID: 34672971]

Kotagama K, Schorr AL, Steber HS et al. ALG-1 Influences Accurate mRNA Splicing Patterns in the Caenorhabditis elegans Intestine and Body Muscle Tissues by Modulating Splicing Factor Activities Genetics 2019-05-11 [PMID: 31073019] (WB, IP)

Barenz F, Kschonsak YT, Meyer A et al. Ccdc61 controls centrosomal localization of Cep170 and is required for spindle assembly and symmetry Mol Biol Cell 2018-10-26 [PMID: 30354798] (WB)

Lobs AK, Schwartz C, Thorwall S et al. Highly Multiplexed CRISPRi Repression of Respiratory Functions Enhances Mitochondrial Localized Ethyl Acetate Biosynthesis in Kluyveromyces marxianus ACS Synth Biol 2018-10-26 [PMID: 30354074] (WB)

Lin Y, Fang ZP, Liu HJ et al. HGF/R-spondin1 rescues liver dysfunction through the induction of Lgr5(+) liver stem cells Nat Commun 2017-10-29 [PMID: 29079780] (ICC/IF)

Seneviratne APB, Turan Z, Hermant A et al. Modulation of estrogen related receptor alpha activity by the kinesin KIF17 Oncotarget 2017-09-09 [PMID: 28881568] (WB)

Lo YH, Chung E, Li Z et al. Transcriptional Regulation by ATOH1 and its Target SPDEF in the Intestine Cell Mol Gastroenterol Hepatol 2017-02-09 [PMID: 28174757] (Chemotaxis)

Jain A, Beutel O, Ebell K et al. Diverting CERT-mediated ceramide transport to mitochondria triggers Bax-dependent apoptosis J Cell Sci 2016-11-27 [PMID: 27888218]

Magarin M, Pohl T, Lill A et al. Embryonic cardiomyocytes can orchestrate various cell protective mechanisms to survive mitochondrial stress J Mol Cell Cardiol 2016-04-24 [PMID: 27106802] (IHC-P)

More publications at <http://www.novusbio.com/NB600-303>





Novus Biologicals USA

10730 E. Briarwood Avenue
Centennial, CO 80112
USA
Phone: 303.730.1950
Toll Free: 1.888.506.6887
Fax: 303.730.1966
nb-customerservice@bio-techne.com

Bio-Techne Canada

21 Canmotor Ave
Toronto, ON M8Z 4E6
Canada
Phone: 905.827.6400
Toll Free: 855.668.8722
Fax: 905.827.6402
canada.inquires@bio-techne.com

Bio-Techne Ltd

19 Barton Lane
Abingdon Science Park
Abingdon, OX14 3NB, United Kingdom
Phone: (44) (0) 1235 529449
Free Phone: 0800 37 34 15
Fax: (44) (0) 1235 533420
info.EMEA@bio-techne.com

General Contact Information

www.novusbio.com
Technical Support: nb-technical@bio-techne.com
Orders: nb-customerservice@bio-techne.com
General: novus@novusbio.com

Products Related to NB600-303

HAF008	Goat anti-Rabbit IgG Secondary Antibody [HRP]
NB7160	Goat anti-Rabbit IgG (H+L) Secondary Antibody [HRP]
NBP2-24891	Rabbit IgG Isotype Control
NB100-56401PEP	GFP Antibody Blocking Peptide

Limitations

This product is for research use only and is not approved for use in humans or in clinical diagnosis. Primary Antibodies are guaranteed for 1 year from date of receipt.

For more information on our 100% guarantee, please visit www.novusbio.com/guarantee

Earn gift cards/discounts by submitting a review: www.novusbio.com/reviews/submit/NB600-303

Earn gift cards/discounts by submitting a publication using this product:
www.novusbio.com/publications

