

Product Datasheet

Glucocorticoid Receptor alpha Antibody - BSA Free NB300-633

Unit Size: 50 ug

Store at -20C. Avoid freeze-thaw cycles.

www.novusbio.com



technical@novusbio.com

Publications: 4

Protocols, Publications, Related Products, Reviews, Research Tools and Images at:
www.novusbio.com/NB300-633

Updated 8/8/2023 v.20.1

Earn rewards for product
reviews and publications.

Submit a publication at www.novusbio.com/publications

Submit a review at www.novusbio.com/reviews/destination/NB300-633

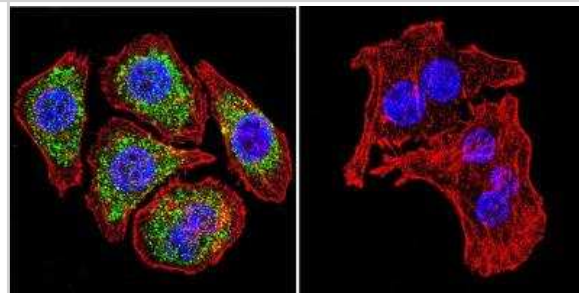


NB300-633**Glucocorticoid Receptor alpha Antibody - BSA Free**

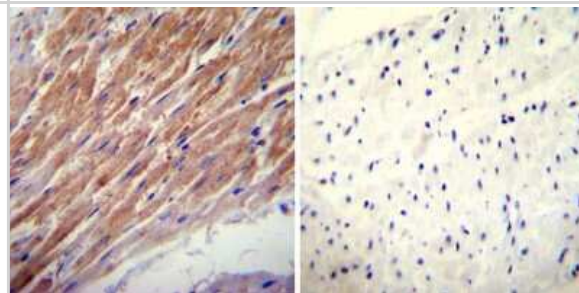
Product Information	
Unit Size	50 ug
Concentration	LYOPH mg/ml
Storage	Store at -20C. Avoid freeze-thaw cycles.
Clonality	Polyclonal
Preservative	0.05% Sodium Azide
Reconstitution Instructions	Reconstitute with 50 ul ultra-pure water to desired concentration.
Isotype	IgG
Purity	Immunogen affinity purified
Buffer	PBS
Product Description	
Host	Rabbit
Gene ID	2908
Gene Symbol	NR3C1
Species	Human, Mouse, Rat, Sheep
Reactivity Notes	Sheep reactivity reported in scientific literature (see Gupta et al 2003).
Specificity/Sensitivity	Detects GR alpha from human, mouse and rat tissues. This does not detect GR beta.
Immunogen	Synthetic Peptide: C(755) E I I T N Q I P K Y S N G N I K K(771)
Product Application Details	
Applications	Western Blot, Simple Western, Immunocytochemistry/ Immunofluorescence, Immunohistochemistry, Immunohistochemistry-Paraffin, Immunoprecipitation, Chromatin Immunoprecipitation (ChIP)
Recommended Dilutions	Western Blot 4 ug/ml, Simple Western, Immunohistochemistry 1:20, Immunocytochemistry/ Immunofluorescence 1:10-1:500, Immunoprecipitation 1:10 - 1:500, Immunohistochemistry-Paraffin 1:20, Chromatin Immunoprecipitation (ChIP) 1:10-1:500
Application Notes	Useful in WB, IP, ICC, IF and ChIP. WB: Detects an approx. 90 kDa protein representing GR in HeLa cell lysate. Simple Western reported by an internal validation. Separated by Size-Jess/Wes, Sally Sue/Peggy Sue, antibody dilution of 1:50. Apparent MW in kDa on Simple Western was 95kDa; matrix was 12-230 kDa.

Images

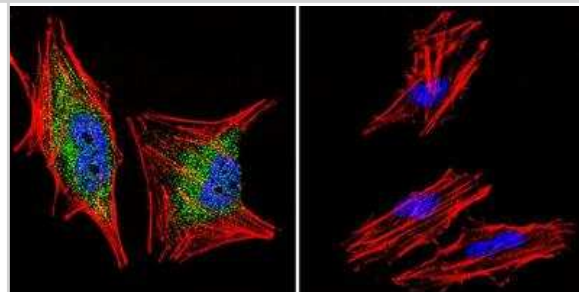
Immunocytochemistry/Immunofluorescence: Glucocorticoid Receptor alpha Antibody [NB300-633] - Analysis of Glucocorticoid Receptor alpha using Glucocorticoid Receptor alpha Polyclonal Antibody shows staining in U251 Cells. Glucocorticoid Receptor alpha (green), F-Actin staining with Phalloidin (red) and nuclei with DAPI (blue) is shown. Cells were grown on chamber slides and fixed with formaldehyde prior to staining. Cells were probed without (control) or with an antibody recognizing Glucocorticoid Receptor alpha at a dilution of 1:100 over night at 4C, washed with PBS and incubated with a DyLight-488 conjugated.



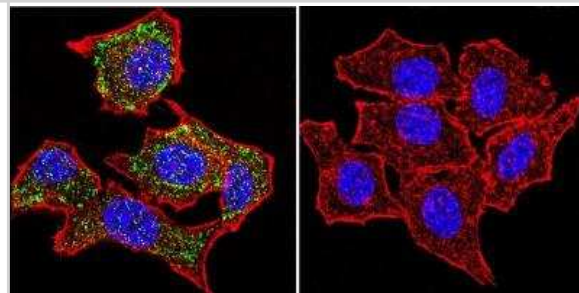
Immunohistochemistry-Paraffin: Glucocorticoid Receptor alpha Antibody [NB300-633] - Both normal and cancer biopsies of deparaffinized Human heart tissues.



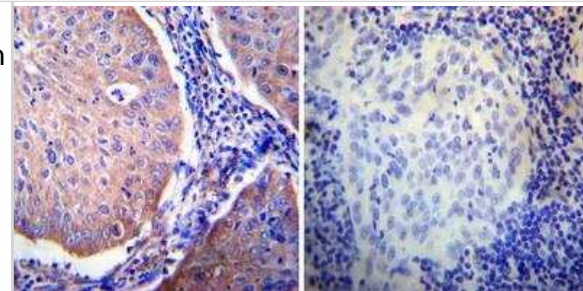
Immunocytochemistry/Immunofluorescence: Glucocorticoid Receptor alpha Antibody [NB300-633] - Analysis of Glucocorticoid Receptor alpha using Glucocorticoid Receptor alpha Polyclonal Antibody shows staining in A2058 Cells. Glucocorticoid Receptor alpha (green), F-Actin staining with Phalloidin (red) and nuclei with DAPI (blue) is shown. Cells were grown on chamber slides and fixed with formaldehyde prior to staining. Cells were probed without (control) or with an antibody recognizing Glucocorticoid Receptor alpha at a dilution of 1:200 over night at 4C, washed with PBS and incubated with a DyLight-488 conjugated.



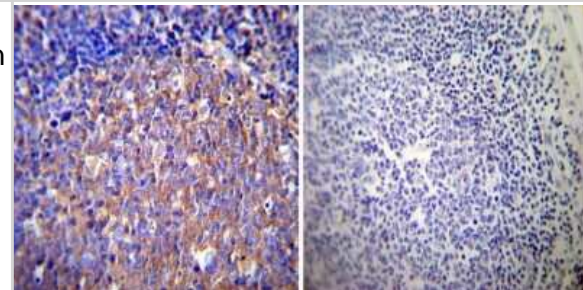
Immunocytochemistry/Immunofluorescence: Glucocorticoid Receptor alpha Antibody [NB300-633] - Analysis of Glucocorticoid Receptor alpha using Glucocorticoid Receptor alpha Polyclonal Antibody shows staining in Hela Cells. Glucocorticoid Receptor alpha (green), F-Actin staining with Phalloidin (red) and nuclei with DAPI (blue) is shown. Cells were grown on chamber slides and fixed with formaldehyde prior to staining. Cells were probed without (control) or with an antibody recognizing Glucocorticoid Receptor alpha at a dilution of 1:100 over night at 4C, washed with PBS and incubated with a DyLight-488 conjugated secondary antibody.



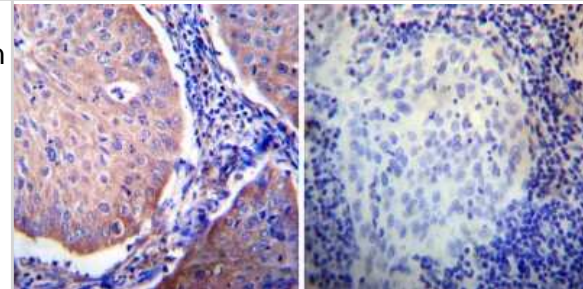
Immunohistochemistry-Paraffin: Glucocorticoid Receptor alpha Antibody [NB300-633] - Both normal and cancer biopsies of deparaffinized Human cervical carcinoma tissues.



Immunohistochemistry-Paraffin: Glucocorticoid Receptor alpha Antibody [NB300-633] - Both normal and cancer biopsies of deparaffinized Human tonsil tissues.



Immunohistochemistry-Paraffin: Glucocorticoid Receptor alpha Antibody [NB300-633] - Both normal and cancer biopsies of deparaffinized Human cervical carcinoma tissues.



Publications

Rodrigues VDST, Miranda RA, Soares PN et al. Neonatal nicotine exposure changes insulin status in fat depots: sex-related differences Journal of developmental origins of health and disease 2021-04-05 [PMID: 33818369]

Yari H, Jin L et al. LncRNA REG1CP promotes tumorigenesis through an enhancer complex to recruit FANCD1 helicase for REG3A transcription. Nat Commun 2019-11-25 [PMID: 31767869] (Chemotaxis, Human)

Miranda RA, Pietrobon CB, Bertasso IM et al. Early weaning leads to specific glucocorticoid signalling in fat depots of adult rats Endocrine 2019-09-07 [PMID: 31494802]

Liang H, Kowalczyk P, Junco JJ et al. Differential Effects on Lung Cancer Cell Proliferation by Agonists of Glucocorticoid and PPARalpha Receptors. Mol Carcinog 2013-04-26 [PMID: 23625588] (WB, Human)



Novus Biologicals USA

10730 E. Briarwood Avenue
Centennial, CO 80112
USA
Phone: 303.730.1950
Toll Free: 1.888.506.6887
Fax: 303.730.1966
nb-customerservice@bio-techne.com

Bio-Techne Canada

21 Canmotor Ave
Toronto, ON M8Z 4E6
Canada
Phone: 905.827.6400
Toll Free: 855.668.8722
Fax: 905.827.6402
canada.inquires@bio-techne.com

Bio-Techne Ltd

19 Barton Lane
Abingdon Science Park
Abingdon, OX14 3NB, United Kingdom
Phone: (44) (0) 1235 529449
Free Phone: 0800 37 34 15
Fax: (44) (0) 1235 533420
info.EMEA@bio-techne.com

General Contact Information

www.novusbio.com
Technical Support: nb-technical@bio-techne.com
Orders: nb-customerservice@bio-techne.com
General: novus@novusbio.com

Products Related to NB300-633

NBL1-10121	eEF1A1 Overexpression Lysate
HAF008	Goat anti-Rabbit IgG Secondary Antibody [HRP]
NB7160	Goat anti-Rabbit IgG (H+L) Secondary Antibody [HRP]
NBP2-24891	Rabbit IgG Isotype Control

Limitations

This product is for research use only and is not approved for use in humans or in clinical diagnosis. Primary Antibodies are guaranteed for 1 year from date of receipt.

For more information on our 100% guarantee, please visit www.novusbio.com/guarantee

Earn gift cards/discounts by submitting a review: www.novusbio.com/reviews/submit/NB300-633

Earn gift cards/discounts by submitting a publication using this product:
www.novusbio.com/publications

