

# Product Datasheet

## NFATC1/NFAT2 Antibody (7A6) NB300-620

Unit Size: 100uL

Store at -20C. Avoid freeze-thaw cycles.

[www.novusbio.com](http://www.novusbio.com)



[technical@novusbio.com](mailto:technical@novusbio.com)

**Reviews: 1 Publications: 5**

Protocols, Publications, Related Products, Reviews, Research Tools and Images at:  
[www.novusbio.com/NB300-620](http://www.novusbio.com/NB300-620)

Updated 12/28/2023 v.20.1

**Earn rewards for product  
reviews and publications.**

Submit a publication at [www.novusbio.com/publications](http://www.novusbio.com/publications)

Submit a review at [www.novusbio.com/reviews/destination/NB300-620](http://www.novusbio.com/reviews/destination/NB300-620)

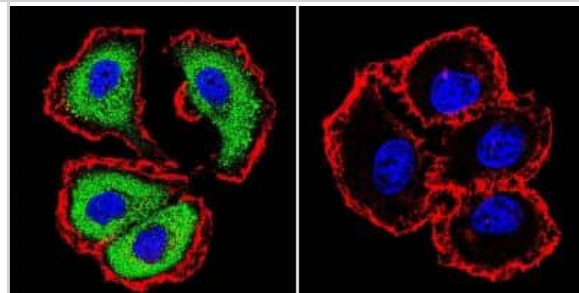


**NB300-620****NFATC1/NFAT2 Antibody (7A6)**

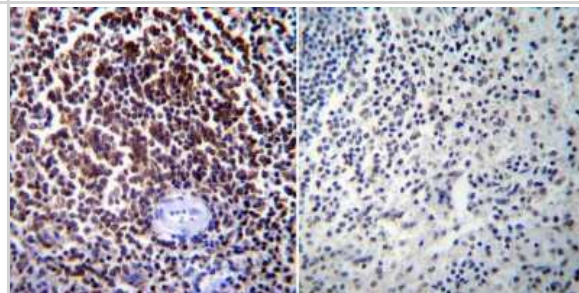
<b>Product Information</b>	
<b>Unit Size</b>	100uL
<b>Concentration</b>	This product is unpurified. The exact concentration of antibody is not quantifiable.
<b>Storage</b>	Store at -20C. Avoid freeze-thaw cycles.
<b>Clonality</b>	Monoclonal
<b>Clone</b>	7A6
<b>Preservative</b>	0.05% Sodium Azide
<b>Isotype</b>	IgG1
<b>Purity</b>	Unpurified
<b>Buffer</b>	Ascites diluted with PBS
<b>Product Description</b>	
<b>Host</b>	Mouse
<b>Gene ID</b>	4772
<b>Gene Symbol</b>	NFATC1
<b>Species</b>	Human, Mouse, Rat, Hamster, Primate, Rabbit
<b>Reactivity Notes</b>	Rabbit reactivity reported in scientific literature (PMID: 16129432). Hamster reactivity reported in scientific literature (PMID: 10866678). Please note that this antibody is reactive to Mouse and derived from the same host, Mouse. Additional Mouse on Mouse blocking steps may be required for IHC and ICC experiments. Please contact Technical Support for more information.
<b>Specificity/Sensitivity</b>	Detects cytosolic nuclear factor of activated T-cells (NFAT 2) from transfected human, mouse, and monkey cells. This does not cross react with NFATp.
<b>Immunogen</b>	Bacterially expressed glutathione S-transferase (GST) fusion protein containing NF-ATc1 residues 1-654.
<b>Product Application Details</b>	
<b>Applications</b>	Western Blot, Simple Western, Gel Super Shift Assays, Immunocytochemistry/ Immunofluorescence, Immunohistochemistry, Immunohistochemistry-Paraffin, Immunoprecipitation, Chromatin Immunoprecipitation (ChIP)
<b>Recommended Dilutions</b>	Western Blot 1:100 - 1:2000, Simple Western, Immunohistochemistry 1:20 - 1:200, Immunocytochemistry/ Immunofluorescence 1:10-1:500, Immunoprecipitation 1:10 - 1:500, Immunohistochemistry-Paraffin 1:20 - 1:200, Gel Super Shift Assays 1:1 - 1:100, Chromatin Immunoprecipitation (ChIP) 1:10-1:500
<b>Application Notes</b>	WB: Detects an approx. 105 kDa band representing transfected NFAT2 from COS cell lysate. Simple Western reported by an internal validation. Separated by Size-All, antibody dilution of 1:50. Apparent MW in kDa on Simple Western was 127kDa; matrix was 12-230 kDa.

## Images

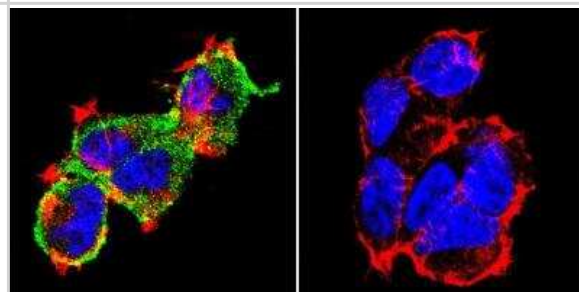
Immunocytochemistry/Immunofluorescence: NFATC1/NFAT2 Antibody (7A6) [NB300-620] - NFATc1 (green), F-Actin staining with Phalloidin (red) and nuclei with DAPI (blue) is shown. Cells were grown on chamber slides and fixed with formaldehyde prior to staining. Cells were probed without (control) or with an antibody recognizing NFATc1 at a dilution of 1:20 over night at 4C, washed with PBS and incubated with a DyLight-488 conjugated.



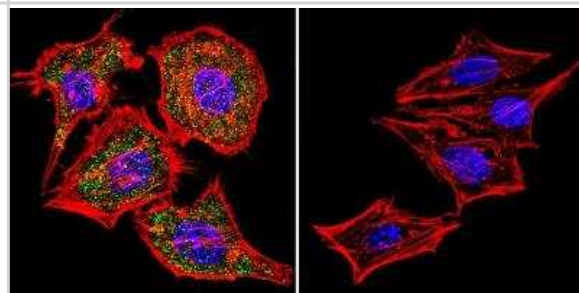
Immunohistochemistry-Paraffin: NFATC1/NFAT2 Antibody (7A6) [NB300-620] - Normal biopsies of deparaffinized Human spleen tissue.



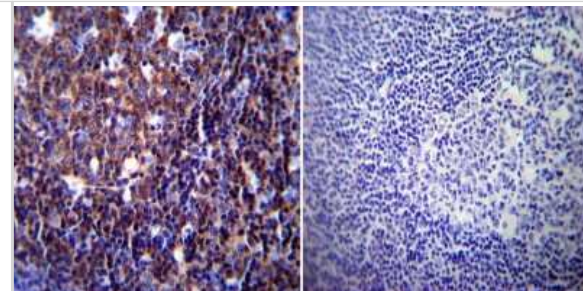
Immunocytochemistry/Immunofluorescence: NFATC1/NFAT2 Antibody (7A6) [NB300-620] - NFATc1 (green), F-Actin staining with Phalloidin (red) and nuclei with DAPI (blue) is shown. Cells were grown on chamber slides and fixed with formaldehyde prior to staining. Cells were probed without (control) or with an antibody recognizing NFATc1 at a dilution of 1:20 over night at 4C, washed with PBS and incubated with a DyLight-488 conjugated.



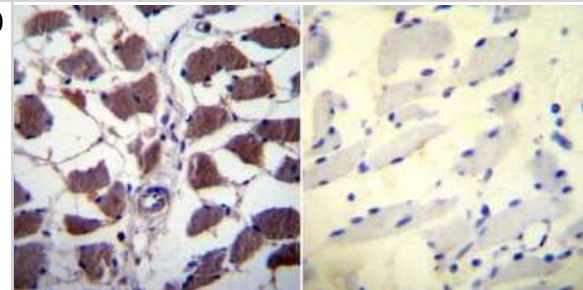
Immunocytochemistry/Immunofluorescence: NFATC1/NFAT2 Antibody (7A6) [NB300-620] - NFATc1 (green), F-Actin staining with Phalloidin (red) and nuclei with DAPI (blue) is shown. Cells were grown on chamber slides and fixed with formaldehyde prior to staining. Cells were probed without (control) or with an antibody recognizing NFATc1 at a dilution of 1:20 over night at 4C, washed with PBS and incubated with a DyLight-488 conjugated.



Immunohistochemistry: NFATC1/NFAT2 Antibody (7A6) [NB300-620] - Normal biopsies of deparaffinized Human tonsil tissue.



Immunohistochemistry-Paraffin: NFATC1/NFAT2 Antibody (7A6) [NB300-620] - Normal biopsies of deparaffinized Human skeletal muscle tissue.



## Publications

Saburi M, Yamada H, Wada N et al. Maternal High-Fat Diet Promotes Abdominal Aortic Aneurysm Expansion in Adult Offspring by Epigenetic Regulation of IRF8-Mediated Osteoclast-like Macrophage Differentiation Cells 2021-08-27 [PMID: 34571873]

Yu F, Li F, Yu P et al. Identification and characterization of NFATc1+ skeletal stem cells in bone regeneration Cell reports 2022-11-08 [PMID: 36351390] (Chemotaxis, Human)

Zhang P, Hu S, Xu H et al. Bushenhuoxue formula inhibits osteoclastogenesis and bone resorption on rabbit steroid-related osteonecrosis of the femoral head by suppressing NF-kappa B/NFATc1 pathway Research Square 2020-09-03 (WB, Human)

Zavaczki E, Gall T, Zarjou A et Al. Ferryl Hemoglobin Inhibits Osteoclastic Differentiation of Macrophages in Hemorrhaged Atherosclerotic Plaques Oxid Med Cell Longev 2020-02-27 [PMID: 32184915] (WB, ICC/IF, Mouse)

Alpini G, Franchitto A, Demorrow S et al. Activation of alpha(1) -adrenergic receptors stimulate the growth of small mouse cholangiocytes via calcium-dependent activation of nuclear factor of activated T cells 2 and specificity protein 1 Hepatology 2011-02-01 [PMID: 21274883] (ICC/IF, IF/IHC, Mouse)



### **Novus Biologicals USA**

10730 E. Briarwood Avenue  
Centennial, CO 80112  
USA  
Phone: 303.730.1950  
Toll Free: 1.888.506.6887  
Fax: 303.730.1966  
nb-customerservice@bio-techne.com

### **Bio-Techne Canada**

21 Canmotor Ave  
Toronto, ON M8Z 4E6  
Canada  
Phone: 905.827.6400  
Toll Free: 855.668.8722  
Fax: 905.827.6402  
canada.inquires@bio-techne.com

### **Bio-Techne Ltd**

19 Barton Lane  
Abingdon Science Park  
Abingdon, OX14 3NB, United Kingdom  
Phone: (44) (0) 1235 529449  
Free Phone: 0800 37 34 15  
Fax: (44) (0) 1235 533420  
info.EMEA@bio-techne.com

### **General Contact Information**

www.novusbio.com  
Technical Support: nb-technical@bio-techne.com  
Orders: nb-customerservice@bio-techne.com  
General: novus@novusbio.com

### **Products Related to NB300-620**

---

NBL1-13608	NFATC1/NFAT2 Overexpression Lysate
HAF007	Goat anti-Mouse IgG Secondary Antibody [HRP]
NB720-B	Rabbit anti-Mouse IgG (H+L) Secondary Antibody [Biotin]
NBP1-97005-0.5mg	Mouse IgG1 Isotype Control (MG1)

---

### **Limitations**

This product is for research use only and is not approved for use in humans or in clinical diagnosis. Primary Antibodies are guaranteed for 1 year from date of receipt.

For more information on our 100% guarantee, please visit [www.novusbio.com/guarantee](http://www.novusbio.com/guarantee)

Earn gift cards/discounts by submitting a review: [www.novusbio.com/reviews/submit/NB300-620](http://www.novusbio.com/reviews/submit/NB300-620)

Earn gift cards/discounts by submitting a publication using this product:  
[www.novusbio.com/publications](http://www.novusbio.com/publications)

