

Product Datasheet

Sodium Potassium ATPase Alpha 3 Antibody (XVIF9-G10) - BSA Free NB300-540

Unit Size: 100ug

Store at -20C. Avoid freeze-thaw cycles.

www.novusbio.com



technical@novusbio.com

Reviews: 2 Publications: 19

Protocols, Publications, Related Products, Reviews, Research Tools and Images at:
www.novusbio.com/NB300-540

Updated 10/19/2023 v.20.1

Earn rewards for product
reviews and publications.

Submit a publication at www.novusbio.com/publications

Submit a review at www.novusbio.com/reviews/destination/NB300-540

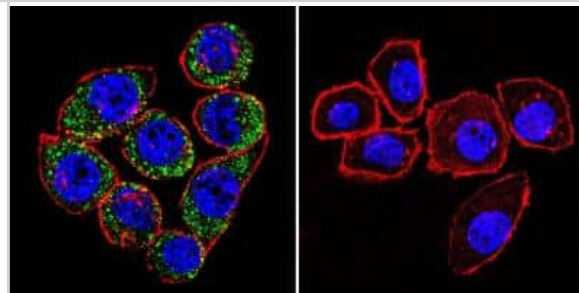


NB300-540**Sodium Potassium ATPase Alpha 3 Antibody (XVIF9-G10) - BSA Free**

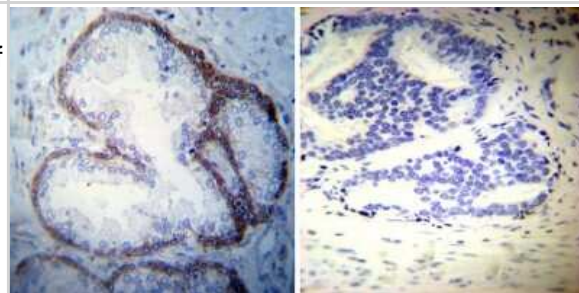
Product Information	
Unit Size	100ug
Concentration	1 mg/ml
Storage	Store at -20C. Avoid freeze-thaw cycles.
Clonality	Monoclonal
Clone	XVIF9-G10
Preservative	0.05% Sodium Azide
Isotype	IgG1
Purity	Protein A purified
Buffer	0.02 M potassium phosphate (pH 7.2), 0.15 M NaCl
Target Molecular Weight	111.749 kDa
Product Description	
Host	Mouse
Gene ID	478
Gene Symbol	ATP1A3
Species	Human, Mouse, Rat, Bovine, Canine, Guinea Pig, Primate, Rabbit, Sheep
Reactivity Notes	Please note that this antibody is reactive to Mouse and derived from the same host, Mouse. Additional Mouse on Mouse blocking steps may be required for IHC and ICC experiments. Please contact Technical Support for more information.
Marker	Plasma Membrane Marker
Specificity/Sensitivity	Detects sodium / potassium ATPase. This is specific for the alpha-3 subunit.
Immunogen	Canine cardiac microsomes.
Product Application Details	
Applications	Western Blot, Simple Western, Flow Cytometry, Immunocytochemistry/Immunofluorescence, Immunohistochemistry, Immunohistochemistry-Frozen, Immunohistochemistry-Paraffin, Block/Neutralize, Single Cell Western
Recommended Dilutions	Western Blot 1 ug/mL, Simple Western 1:100, Flow Cytometry 1 ug / 10 ⁶ cells, Immunohistochemistry 1:10 - 1:500, Immunocytochemistry/Immunofluorescence 5 ug/mL, Immunohistochemistry-Paraffin 1:10 - 1:500, Immunohistochemistry-Frozen 3 ug/mL, Single Cell Western 100 ug/mL, Block/Neutralize
Application Notes	<p>May be useful in WB, IF, and IHC-Fr. WB: Detects an approx. 110 kDa protein representing the alpha-3 subunit of the sodium/potassium ATPase from canine skeletal muscle extract. IHC: Staining of sodium / potassium ATPase in rat retina yields a pattern consistent with plasma membrane localization.</p> <p>In Simple Western only 10 - 15 uL of the recommended dilution is used per data point. Separated by Size-Wes, Sally Sue/Peggy Sue. Single Cell Western validated using live primary humna cortical neurons.</p>

Images

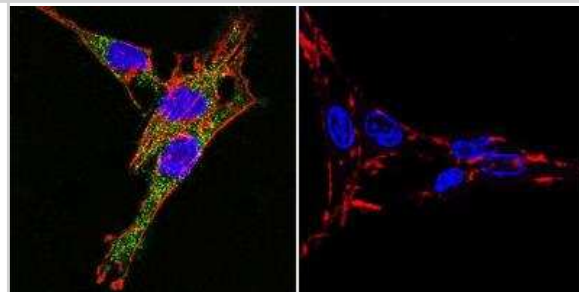
Immunocytochemistry/Immunofluorescence: Sodium Potassium ATPase Alpha 3 Antibody (XVIF9-G10) [NB300-540] - Sodium/Potassium ATPase alpha-3 staining (green), F-Actin staining with Phalloidin (red) and nuclei with DAPI (blue) in U251 glioma cells is shown. Cells were grown on chamber slides and fixed with formaldehyde prior to staining. Cells were probed without (control) or with or an antibody recognizing Sodium/Potassium ATPase alpha-3 at a dilution of 1:20 over night at 4C, washed with PBS and incubated with a DyLight-488 conjugated.



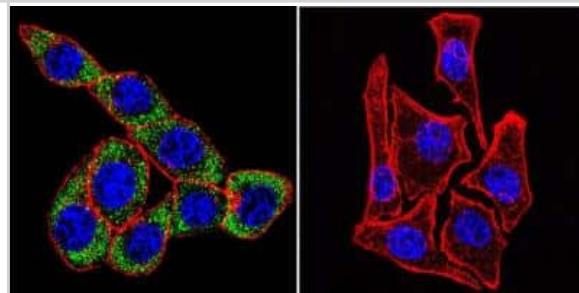
Immunohistochemistry-Paraffin: Sodium Potassium ATPase Alpha 3 Antibody (XVIF9-G10) [NB300-540] - Both normal and cancer biopsies of deparaffinized Human prostate carcinoma tissues.



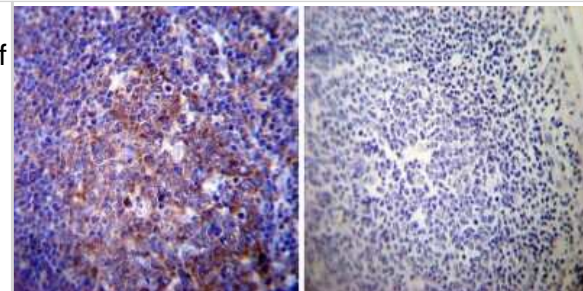
Immunocytochemistry/Immunofluorescence: Sodium Potassium ATPase Alpha 3 Antibody (XVIF9-G10) [NB300-540] - Analysis of Sodium/Potassium ATPase alpha-3 using Sodium/Potassium ATPase alpha-3 Monoclonal antibody (XVIF9-G10) shows staining in C6 glioma cells. Sodium/Potassium ATPase alpha-3 staining (green), F-Actin staining with Phalloidin (red) and nuclei with DAPI (blue) is shown. Cells were grown on chamber slides and fixed with formaldehyde prior to staining. Cells were probed without (control) or with or an antibody recognizing Sodium/Potassium ATPase alpha-3 at a dilution of 1:20 over night at 4C, washed with PBS and incubated with a DyLight-488 conjugated.



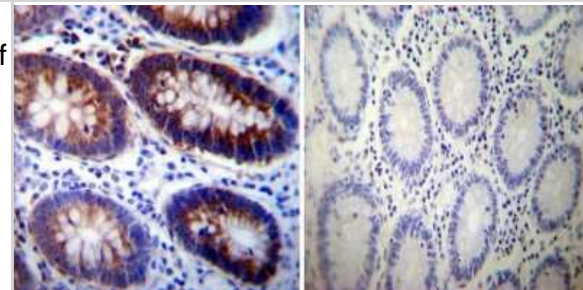
Immunocytochemistry/Immunofluorescence: Sodium Potassium ATPase Alpha 3 Antibody (XVIF9-G10) [NB300-540] - Sodium/Potassium ATPase alpha-3 staining (green), F-Actin staining with Phalloidin (red) and nuclei with DAPI (blue) in HeLa cells is shown. Cells were grown on chamber slides and fixed with formaldehyde prior to staining. Cells were probed without (control) or with or an antibody recognizing Sodium/Potassium ATPase alpha-3 at a dilution of 1:20 over night at 4C, washed with PBS and incubated with a DyLight-488 conjugated.



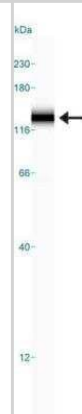
Immunohistochemistry-Paraffin: Sodium Potassium ATPase Alpha 3 Antibody (XVIF9-G10) [NB300-540] - Both normal and cancer biopsies of deparaffinized Human tonsil tissues.



Immunohistochemistry-Paraffin: Sodium Potassium ATPase Alpha 3 Antibody (XVIF9-G10) [NB300-540] - Both normal and cancer biopsies of deparaffinized Human colon tissues.



Simple Western: Sodium Potassium ATPase Alpha 3 Antibody (XVIF9-G10) [NB300-540] - Simple Western lane view shows a specific band for Sodium Potassium ATPase Alpha 3 in 0.5 mg/ml of Human Brain lysate. This experiment was performed under reducing conditions using the 12-230 kDa separation system.



Publications

Lazar AM, Irannejad R, Baldwin TA et al. G protein-regulated endocytic trafficking of adenylyl cyclase type 9 eLife 2020-06-09 [PMID: 32515353]

Zakharova IO, Bayunova LV, Zorina II et al. Insulin and α -Tocopherol Enhance the Protective Effect of Each Other on Brain Cortical Neurons under Oxidative Stress Conditions and in Rat Two-Vessel Forebrain Ischemia/Reperfusion Injury International Journal of Molecular Sciences 2021-10-29 [PMID: 34769198] (B/N, WB)

Ferrer-Ferrer M, Jia S, Kaushik R et al. Mice deficient in synaptic protease neurotrypsin show impaired spaced long-term potentiation and blunted learning-induced modulation of dendritic spines Cellular and molecular life sciences : CMLS 2023-03-05 [PMID: 36871239] (IHC-Fr, Mouse)

Pfeiffer R, Beron J, Verrey F. Regulation of Na⁺ pump function by aldosterone is alpha-subunit isoform specific. J Physiol 1999-04-14 [PMID: 10200415]

Ferrer-Ferrer M, Jia S, Kaushik R et al. Disturbance in Hebbian-like spinogenesis blunted learning-induced modulation in the number and spatial distribution of dendritic spines Research Square 2022-06-24 (IF/IHC, Mouse)

Nordstrom CK, Danckwardt-Lilliestrom N, Liu W, Rask-Andersen H Reversed polarization of Na/K-ATPase—a sign of inverted transport in the human endolymphatic sac: a super-resolution structured illumination microscopy (SR-SIM) study Cell Tissue Res. 2019-11-12 [PMID: 31713726]

Liu W, Luque M, Glueckert R et al. Expression of Na/K-ATPase subunits in the human cochlea: a confocal and super-resolution microscopy study with special reference to auditory nerve excitation and cochlear implantation Ups. J. Med. Sci. 2019-08-01 [PMID: 31460814]

Halbert D, Domenyuk V, Spetzler D et al. Aptamers and uses thereof United States Patent Application US 9958448 B2 2018-01-01

Coleman LG, Zou J, Crews FT Microglial-derived miRNA let-7 and HMGB1 contribute to ethanol-induced neurotoxicity via TLR7 J Neuroinflammation Jan 25 2017 12:00AM [PMID: 28118842] (FLOW, ELISA, Human) J Neuroinflammation. 2017-01-25 [PMID: 28118842] (FLOW, Human)

Details:

Citation using the Alexa Fluor 488 form of this antibody.

Ivakine EA, Acton BA, Mahadevan V et al. Neto2 is a KCC2 interacting protein required for neuronal Cl⁻ regulation in hippocampal neurons. Proc Natl Acad Sci U S A 2013-02-26 [PMID: 23401525] (WB, Mouse)

Rose EM, Koo JCP, Antflick JE et al. Glutamate Transporter Coupling to Na,K-ATPase. J Neurosci;29(25):8143-8155. 2009-01-01 [PMID: 19553454]

Hou Z Matherly LH. Oligomeric Structure of the Human Reduced Folate Carrier: Identification of Homo-Oligomers Dominant-Negative Effects on Carrier Expression Function. J Biol Chem;284(5):3285-3293. 2009-01-01 [PMID: 19019821]

More publications at <http://www.novusbio.com/NB300-540>



Novus Biologicals USA

10730 E. Briarwood Avenue
Centennial, CO 80112
USA
Phone: 303.730.1950
Toll Free: 1.888.506.6887
Fax: 303.730.1966
nb-customerservice@bio-techne.com

Bio-Techne Canada

21 Canmotor Ave
Toronto, ON M8Z 4E6
Canada
Phone: 905.827.6400
Toll Free: 855.668.8722
Fax: 905.827.6402
canada.inquires@bio-techne.com

Bio-Techne Ltd

19 Barton Lane
Abingdon Science Park
Abingdon, OX14 3NB, United Kingdom
Phone: (44) (0) 1235 529449
Free Phone: 0800 37 34 15
Fax: (44) (0) 1235 533420
info.EMEA@bio-techne.com

General Contact Information

www.novusbio.com
Technical Support: nb-technical@bio-techne.com
Orders: nb-customerservice@bio-techne.com
General: novus@novusbio.com

Products Related to NB300-540

NBL1-07809	Sodium Potassium ATPase Alpha 3 Overexpression Lysate
HAF007	Goat anti-Mouse IgG Secondary Antibody [HRP]
NB720-B	Rabbit anti-Mouse IgG (H+L) Secondary Antibody [Biotin]
NBP1-97005-0.5mg	Mouse IgG1 Isotype Control (MG1)

Limitations

This product is for research use only and is not approved for use in humans or in clinical diagnosis. Primary Antibodies are guaranteed for 1 year from date of receipt.

For more information on our 100% guarantee, please visit www.novusbio.com/guarantee

Earn gift cards/discounts by submitting a review: www.novusbio.com/reviews/submit/NB300-540

Earn gift cards/discounts by submitting a publication using this product:
www.novusbio.com/publications

