

Product Datasheet

SCP1 Antibody NB300-228

Unit Size: 0.1 ml

Store at 4C. Do not freeze.

www.novusbio.com



technical@novusbio.com

Publications: 11

Protocols, Publications, Related Products, Reviews, Research Tools and Images at:
www.novusbio.com/NB300-228

Updated 8/21/2023 v.20.1

**Earn rewards for product
reviews and publications.**

Submit a publication at www.novusbio.com/publications

Submit a review at www.novusbio.com/reviews/destination/NB300-228



NB300-228

SCP1 Antibody

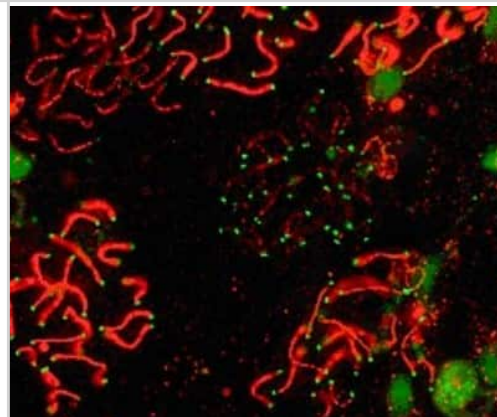
Product Information	
Unit Size	0.1 ml
Concentration	1 mg/ml
Storage	Store at 4C. Do not freeze.
Clonality	Polyclonal
Preservative	0.1% Sodium Azide
Isotype	IgG
Purity	Immunogen affinity purified
Buffer	Tris-Citrate/Phosphate (pH 7.0 - 8.0)

Product Description	
Host	Rabbit
Gene ID	6847
Gene Symbol	SYCP1
Species	Human, Mouse, Rat, Primate
Immunogen	A C-terminal synthetic peptide made to the human SCP1 protein sequence. [UniProt# Q15431]

Product Application Details	
Applications	Western Blot, Simple Western, Immunoblotting, Immunocytochemistry/Immunofluorescence, Immunohistochemistry, Immunohistochemistry-Paraffin
Recommended Dilutions	Western Blot reported in scientific literature (PMID 23843895), Simple Western 1:200, Immunohistochemistry, Immunocytochemistry/Immunofluorescence 1:300 -1:750, Immunohistochemistry-Paraffin reported in scientific literature (PMID 26858254), Immunoblotting reported in scientific literature (PMID 27431324)
Application Notes	<p>This SCP1 antibody does not appear to work in Immunohistochemistry on paraffin-embedded sections. *The investigator should determine the optimal working dilution for a specific application.</p> <p>In Simple Western only 10 - 15 uL of the recommended dilution is used per data point. Separated by Size-Wes, Sally Sue/Peggy Sue.</p>

Images

Immunocytochemistry/Immunofluorescence: SCP1 Antibody [NB300-228] - SCP1 labeled in mouse pachytene preparation (red), using NB 300-228. CDK2 staining, near telomeres, is also present (green).



Simple Western: SCP1 Antibody [NB300-228] - Lane view shows a specific band for SCP1 in 0.5 mg/ml of Human Testis (left) and Mouse Testis (right) lysate. This experiment was performed under reducing conditions using the 12-230 kDa separation system. * Non-specific interaction with the 230 kDa Simple Western standard may be seen with this antibody



Publications

Chien JC, Tabet E, Pinkham K et al. A multiplexed bioluminescent reporter for sensitive and non-invasive tracking of DNA double strand break repair dynamics in vitro and in vivo *Nucleic Acids Res* 2020-08-16 [PMID: 32797168]

Liu C, Liu H, Zhang H et al. Paternal USP26 mutations raise Klinefelter syndrome risk in the offspring of mice and humans *The EMBO journal* 2021-05-12 [PMID: 33978233]

Wei H, Khawar MB, Tang W et al. Sirt6 is required for spermatogenesis in mice *Aging (Albany NY)* 2020-09-11 [PMID: 32915773]

Wang L, Tu Z, et al. Dual roles of TRF1 in tethering telomeres to the nuclear envelope and protecting them from fusion during meiosis. *Cell Death Differ* 2018-06-01 [PMID: 29311622] (ICC/IF, Mouse)

Xu Z, Song Z, Li G et al. H2B ubiquitination regulates meiotic recombination by promoting chromatin relaxation. *Nucleic Acids Res* 2016-07-18 [PMID: 27431324]

Liu YJ, Liu C, Chang Z et al. Degradation of the Separase-cleaved Rec8, a Meiotic Cohesin Subunit, by the N-end Rule Pathway *J. Biol. Chem.* 2016-02-08 [PMID: 26858254] (IHC-P, Mouse)

Zheng Y, Liu Y, Jin H et al. Scavenger Receptor B1 is a Potential Biomarker of Human Nasopharyngeal Carcinoma and Its Growth is Inhibited by HDL-mimetic Nanoparticles. *Theranostics* 2013-06-25 [PMID: 23843895] (WB, Human)

Yamauchi K, Hasegawa K, Chuma S et al. In vitro germ cell differentiation from cynomolgus monkey embryonic stem cells. *PLoS One* 2009-01-01 [PMID: 19399191] (ICC/IF, Primate)

Bisig CG, Guiraldelli MF, Kouznetsova A et al. Synaptonemal Complex Components Persist at Centromeres and Are Required for Homologous Centromere Pairing in Mouse Spermatocytes *PLoS Genet* 2012-06-01 [PMID: 22761579] (ICC/IF, Mouse)

Takada Y, Naruse C, Costa Y et al. HP1 $\{\gamma\}$ links histone methylation marks to meiotic synapsis in mice. *Development*;138(19):4207-4217. 2011-10-01 [PMID: 21896631]

Dann, CT et al. Heritable and stable gene knockdown in rats. *Proc Natl Acad Sci U S A*;103(30):11246-51. 2006-07-02 [PMID: 16844779] (ICC/IF, Rat)

Procedures

Immunocytochemistry/Immunofluorescence protocol for SCP1 Antibody (NB300-228)

SCP1 Antibody: https://www.novusbio.com/products/scp1-antibody_nb300-228

Immunofluorescence Procedure

1. Freshly prepared slides are soaked in 1X ADB for 75 minutes.
2. Primary antibodies are added concurrently (SCP1 and CDK2).
3. The primary antibodies are incubated overnight in a humid chamber (37 degrees Celsius).
4. The slides are washed for 40 minutes in 1X ADB.
5. The slides are detected with the appropriate secondary antibodies (RDAR for SCP1 and FDAM for CDK2).
6. The slides are incubated for 4 hours in a humid chamber (37 degrees Celsius).
7. The slides are washed for 20 minutes in 1X ADB, followed by 3 washes, 10 minutes each, in 1X PBS.
8. The slides are counterstained with DAPI.
9. Images are captured after allowing the slides to remain in the dark overnight at RT.





Novus Biologicals USA

10730 E. Briarwood Avenue
Centennial, CO 80112
USA
Phone: 303.730.1950
Toll Free: 1.888.506.6887
Fax: 303.730.1966
nb-customerservice@bio-techne.com

Bio-Techne Canada

21 Canmotor Ave
Toronto, ON M8Z 4E6
Canada
Phone: 905.827.6400
Toll Free: 855.668.8722
Fax: 905.827.6402
canada.inquires@bio-techne.com

Bio-Techne Ltd

19 Barton Lane
Abingdon Science Park
Abingdon, OX14 3NB, United Kingdom
Phone: (44) (0) 1235 529449
Free Phone: 0800 37 34 15
Fax: (44) (0) 1235 533420
info.EMEA@bio-techne.com

General Contact Information

www.novusbio.com
Technical Support: nb-technical@bio-techne.com
Orders: nb-customerservice@bio-techne.com
General: novus@novusbio.com

Products Related to NB300-228

NB300-228PEP	SCP1 Antibody Blocking Peptide
HAF008	Goat anti-Rabbit IgG Secondary Antibody [HRP]
NB7160	Goat anti-Rabbit IgG (H+L) Secondary Antibody [HRP]
NBP2-24891	Rabbit IgG Isotype Control

Limitations

This product is for research use only and is not approved for use in humans or in clinical diagnosis. Primary Antibodies are guaranteed for 1 year from date of receipt.

For more information on our 100% guarantee, please visit www.novusbio.com/guarantee

Earn gift cards/discounts by submitting a review: www.novusbio.com/reviews/submit/NB300-228

Earn gift cards/discounts by submitting a publication using this product:
www.novusbio.com/publications

