

Product Datasheet

BCAS1 Antibody NB100-681

Unit Size: 0.1 mg

Store at 4C short term. Aliquot and store at -20C long term. Avoid freeze-thaw cycles.

www.novusbio.com



technical@novusbio.com

Protocols, Publications, Related Products, Reviews, Research Tools and Images at:
www.novusbio.com/NB100-681

Updated 5/6/2020 v.20.1

Earn rewards for product
reviews and publications.

Submit a publication at www.novusbio.com/publications

Submit a review at www.novusbio.com/reviews/destination/NB100-681



NB100-681

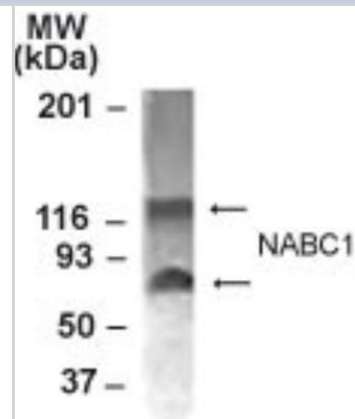
BCAS1 Antibody

Product Information	
Unit Size	0.1 mg
Concentration	1 mg/ml
Storage	Store at 4C short term. Aliquot and store at -20C long term. Avoid freeze-thaw cycles.
Clonality	Polyclonal
Preservative	0.02% Sodium Azide
Isotype	IgG
Purity	Immunogen affinity purified
Buffer	PBS
Product Description	
Host	Rabbit
Gene ID	8537
Gene Symbol	BCAS1
Species	Human
Specificity/Sensitivity	Reacts with human NABC1. Reactivity to other species unknown.
Immunogen	Reacts with residues 532-550 [DTNSLQNGDKLQKRPEKRQ] of human NABC1.
Product Application Details	
Applications	Western Blot, Simple Western
Recommended Dilutions	Western Blot 1:100-1:2000, Simple Western 1:5000
Application Notes	<p>This antibody may be used for Western blot analysis where 2 bands are seen at ~120 and ~80 kDa. NABC1 is a 60 kDa protein; however it forms dimers, which are readily detectable in MCF-7 cells. No other applications have been tested. Suggested Working Dilutions:* Western blot - 1:500 to 1:1,000 *The investigator should determine the optimal dilution for a specific application.</p> <p>In Simple Western only 10 - 15 uL of the recommended dilution is used per data point. Separated by Size-Wes, Sally Sue/Peggy Sue.</p>

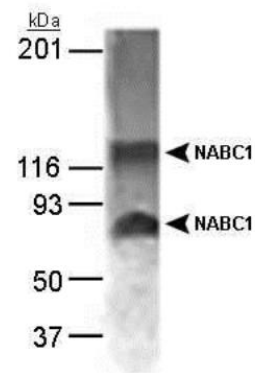


Images

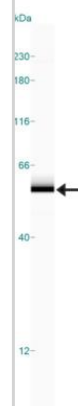
Western Blot: BCAS1 Antibody [NB100-681] - Western blot analysis of BCAS1 from 15 ug of MCF-7 cell lysate using NB100-681 at 1:1000 dilution. BCAS1 is a 60 kDa protein: however it forms homodimers, which are detected in MCF-7 cells.



Western Blot: BCAS1 Antibody [NB100-681] - Detection of NABC1 in MCF-7 whole cell lysate (15 ug) using a 1:1,000 dilution of NB 100-681.



Simple Western: BCAS1 Antibody [NB100-681] - Simple Western lane view shows a specific band for BCAS1 in 0.05 mg/ml of MCF-7 lysate. This experiment was performed under reducing conditions using the 12-230 kDa separation system.





Novus Biologicals USA

10730 E. Briarwood Avenue
Centennial, CO 80112
USA
Phone: 303.730.1950
Toll Free: 1.888.506.6887
Fax: 303.730.1966
novus@novusbio.com

Bio-Techne Canada

21 Canmotor Ave
Toronto, ON M8Z 4E6
Canada
Phone: 905.827.6400
Toll Free: 855.668.8722
Fax: 905.827.6402
canada.inquires@bio-techne.com

Bio-Techne Ltd

19 Barton Lane
Abingdon Science Park
Abingdon, OX14 3NB, United Kingdom
Phone: (44) (0) 1235 529449
Free Phone: 0800 37 34 15
Fax: (44) (0) 1235 533420
info.EMEA@bio-techne.com

General Contact Information

www.novusbio.com
Technical Support: technical@novusbio.com
Orders: orders@novusbio.com
General: novus@novusbio.com

Products Related to NB100-681

NB820-59465	MCF-7 Whole Cell Lysate
HAF008	Goat anti-Rabbit IgG Secondary Antibody [HRP (Horseradish Peroxidase)]
NB7156	Goat anti-Rabbit IgG (H+L) Secondary Antibody
NBP2-24891	Rabbit IgG Isotype Control

Limitations

This product is for research use only and is not approved for use in humans or in clinical diagnosis. Primary Antibodies are guaranteed for 1 year from date of receipt.

For more information on our 100% guarantee, please visit www.novusbio.com/guarantee

Earn gift cards/discounts by submitting a review: www.novusbio.com/reviews/submit/NB100-681

Earn gift cards/discounts by submitting a publication using this product:
www.novusbio.com/publications

