

# Product Datasheet

## beta Tubulin Antibody NB100-56459

Unit Size: 0.1 mg

Store at 4C short term. Aliquot and store at -20C long term. Avoid freeze-thaw cycles.

[www.novusbio.com](http://www.novusbio.com)



[technical@novusbio.com](mailto:technical@novusbio.com)

### Publications: 11

Protocols, Publications, Related Products, Reviews, Research Tools and Images at:  
[www.novusbio.com/NB100-56459](http://www.novusbio.com/NB100-56459)

Updated 5/6/2020 v.20.1

Earn rewards for product  
reviews and publications.

Submit a publication at [www.novusbio.com/publications](http://www.novusbio.com/publications)

Submit a review at [www.novusbio.com/reviews/destination/NB100-56459](http://www.novusbio.com/reviews/destination/NB100-56459)



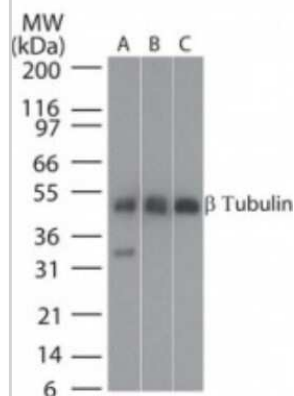
**NB100-56459**

beta Tubulin Antibody

Product Information	
Unit Size	0.1 mg
Concentration	1.0 mg/ml
Storage	Store at 4C short term. Aliquot and store at -20C long term. Avoid freeze-thaw cycles.
Clonality	Polyclonal
Preservative	0.05% Sodium Azide
Isotype	IgG
Purity	Protein G purified
Buffer	PBS
Product Description	
Host	Rabbit
Gene ID	203068
Gene Symbol	TUBB
Species	Human, Mouse, Rat, Bovine, Canine, Chicken, Feline, Monkey, Primate, Xenopus
Reactivity Notes	Feline reactivity reported in scientific literature (PMID: 25668772).
Specificity/Sensitivity	The amino acid sequence used as immunogen has 100% identity in beta I and beta II tubulin.
Immunogen	A synthetic peptide corresponding to a portion of amino acids 400-450 of human b-tubulin was used as immunogen for this antibody, GenBank no. gi 27227551 gb AAN85571.1 .
Product Application Details	
Applications	Western Blot, Simple Western, Immunohistochemistry, Immunohistochemistry-Paraffin
Recommended Dilutions	Western Blot 0.1 - 1 ug/mL, Simple Western 1:50, Immunohistochemistry 1:100 - 1:1000, Immunohistochemistry-Paraffin 5 - 10 ug/mL
Application Notes	In Simple Western only 10 - 15 uL of the recommended dilution is used per data point. Separated by Size.

## Images

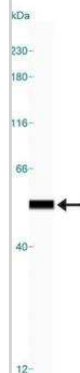
Western Blot: beta Tubulin Antibody [NB100-56459] - Analysis of beta-Tubulin in A: human brain, B: mouse brain and C: rat brain tissue lysates using the this antibody at 25 ug/mL.



Immunohistochemistry-Paraffin: beta Tubulin Antibody [NB100-56459] - Human kidney tubules stained with beta-Tubulin antibody at 10 ug/mL. Staining of formalin-fixed tissues is enhanced by boiling tissue sections in 10 mM sodium citrate buffer, pH 6.0 for 10-20 min followed by cooling at RT for 20 min.



Simple Western: beta Tubulin Antibody [NB100-56459] - Image shows a specific band for beta Tubulin in 0.5 mg/mL of Human Brain lysate. This experiment was performed under reducing conditions using the 12-230 kDa separation system.



## Publications

Cheramangalam RN, Anand T, Pandey P et al. Bendless is essential for PINK1-Park mediated Mitofusins degradation under mitochondrial stress caused by loss of LRPPRC PLoS genetics 2023-04-01 [PMID: 37098042] (WB, Drosophila)

Lima C, Andrade-Barros AI, Bernardo JTG et al. Natterin-Induced Neutrophilia Is Dependent on cGAS/STING Activation via Type I IFN Signaling Pathway International journal of molecular sciences [PMID: 35408954] (WB, Mouse)

Krisko TI, Nicholls HT, Bare CJ et al. Dissociation of Adaptive Thermogenesis from Glucose Homeostasis in Microbiome-Deficient Mice Cell Metab. 2020-02-12 [PMID: 32084379]

R Goulet C, Bernard G, Tremblay S et al. Exosomes Induce Fibroblast Differentiation into Cancer-associated Fibroblasts through TGF $\beta$  Signaling. Mol. Cancer Res. 2018-04-10 [PMID: 29636362] (WB)

Chen M, Arumugam TV, Leanage G et al. Disease-modifying effect of intravenous immunoglobulin in an experimental model of epilepsy Sci Rep. 2017-01-11 [PMID: 28074934] (WB, Mouse)

Williams K, Balsor JL, Beshara S et al. Experience-dependent central vision deficits: Neurobiology and visual acuity Vision Res. 2015-02-07 [PMID: 25668772] (WB, Feline)

### Details:

beta-Tubulin antibody used at 1:4000 dilution in WB application for analysing 25ug lysates of the central, peripheral, and monocular regions of visual cortex /V1 section obtained from the brain tissues of 5 week old Feline/Cats which were subjected to 6 hours to 7 days of monocular deprivation (Fig. 1).

Murphy KM, Balsor J, Beshara S et al. A high-throughput semi-automated preparation for filtered synaptoneurosomes J. Neurosci. Methods. 2014-07-02 [PMID: 24997341] (WB, Canine, Rat)

### Details:

beta Tubulin antibody used at 1:4000 dilution in WB on whole homogenate and synaptoneurosomes from somatosensory cortex of Long Evans rats and adult cat/feline frontal cortex.

Kamal A, Sreekanth K, Kumar PP et al. Synthesis and potential cytotoxic activity of new phenanthrylphenol-pyrrolobenzodiazepines. Eur J Med Chem. 2010-06-01 [PMID: 20171761]

### Details:

Products cited for western blot: 1. PARP (IMG-401A): MCF-7 cells treated with numerous compounds, Fig 7. 2. B-Tubulin (IMG-5180A): MCF-7 cells treated with PP-PBDs, Fig 6 and Fig 7. 3. Cytochrome C (IMG-101A): MCF-7 cells treated with numerous compounds,

Boniface K, Diveu C, Morel F et al. Oncostatin M secreted by skin infiltrating T lymphocytes is a potent keratinocyte activator involved in skin inflammation. J Immunol. 2007-04-01 [PMID: 17372020]

Li R, Guan H, Yang K. Neuropeptide Y potentiates beta-adrenergic stimulation of lipolysis in 3T3-L1 adipocytes. Regul Pept. 2012-10-10 [PMID: 22750277]

Saha T. LAMP2A overexpression in breast tumors promotes cancer cell survival via chaperone-mediated autophagy. Autophagy. 2012-11-01 [PMID: 22874552]



### **Novus Biologicals USA**

10730 E. Briarwood Avenue  
Centennial, CO 80112  
USA

Phone: 303.730.1950  
Toll Free: 1.888.506.6887  
Fax: 303.730.1966  
novus@novusbio.com

### **Bio-Techne Canada**

21 Canmotor Ave  
Toronto, ON M8Z 4E6  
Canada

Phone: 905.827.6400  
Toll Free: 855.668.8722  
Fax: 905.827.6402  
canada.inquires@bio-techne.com

### **Bio-Techne Ltd**

19 Barton Lane  
Abingdon Science Park  
Abingdon, OX14 3NB, United Kingdom

Phone: (44) (0) 1235 529449  
Free Phone: 0800 37 34 15  
Fax: (44) (0) 1235 533420  
info.EMEA@bio-techne.com

### **General Contact Information**

www.novusbio.com  
Technical Support: technical@novusbio.com  
Orders: orders@novusbio.com  
General: novus@novusbio.com

### **Products Related to NB100-56459**

---

NB820-59177	Human Brain Whole Tissue Lysate (Adult Whole Normal)
HAF008	Goat anti-Rabbit IgG Secondary Antibody [HRP]
NB7160	Goat anti-Rabbit IgG (H+L) Secondary Antibody [HRP]
NBP2-24891	Rabbit IgG Isotype Control

---

### **Limitations**

This product is for research use only and is not approved for use in humans or in clinical diagnosis. Primary Antibodies are guaranteed for 1 year from date of receipt.

For more information on our 100% guarantee, please visit [www.novusbio.com/guarantee](http://www.novusbio.com/guarantee)

Earn gift cards/discounts by submitting a review: [www.novusbio.com/reviews/submit/NB100-56459](http://www.novusbio.com/reviews/submit/NB100-56459)

Earn gift cards/discounts by submitting a publication using this product:  
[www.novusbio.com/publications](http://www.novusbio.com/publications)

