

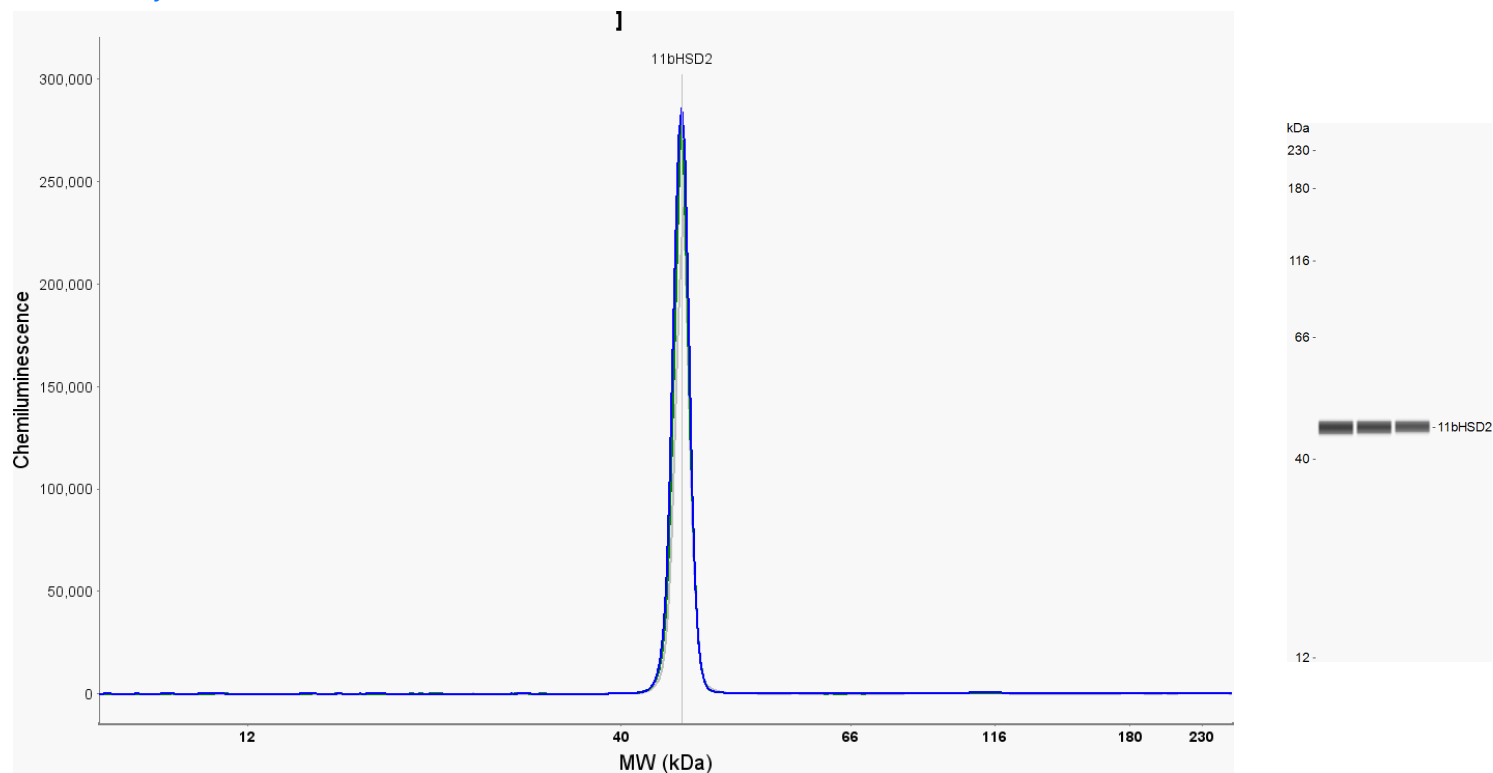
## Simple Western Antibody Datasheet

# Human 11 $\beta$ -HSD2

Vendor: R&D Systems

Catalog #: MAB8630

[View Antibody Link](#)



## Antibody

Target:	Human 11 $\beta$ -HSD2
Host:	Mouse
Clonality:	Monoclonal
Type:	Primary

## Assay

Assay Type:	Size
Antibody Dilution:	1:100, 1:200, 1:400
Detection Mode:	Fluorescence
Separation Matrix:	12–230 kDa
Observed kDa:	46
Sample Concentration:	0.1 mg/mL
Sample Type / Preparation:	Primary Human term placenta / 5 °C, 5 minutes, reducing (+DTT)

## Citations (0)

For additional information on this antibody: [view antibody link](#).

This antibody is certified for Simple Western™ technology. Visit the links below to learn about Simple Western technology, find validated antibodies, or submit new antibody validation data. For more information, contact: [instrument.support@bio-techne.com](mailto:instrument.support@bio-techne.com)

[Simple Western Systems](#)

[Simple Western Antibody Database](#)

[Submit Antibody Validation Data](#)

**R&Dsystems** by **biotechne**

For Research Use or Manufacturing Purposes Only.

R&D Systems™ and Bio-Techne® are trademarks or registered trademarks of Bio-Techne Corporation and affiliated entities. All other trademarks, service marks, and trade names are the property of their respective owners. Any use of third-party names, logos, or marks does not imply affiliation, sponsorship, or endorsement. © 2026 Bio-Techne.