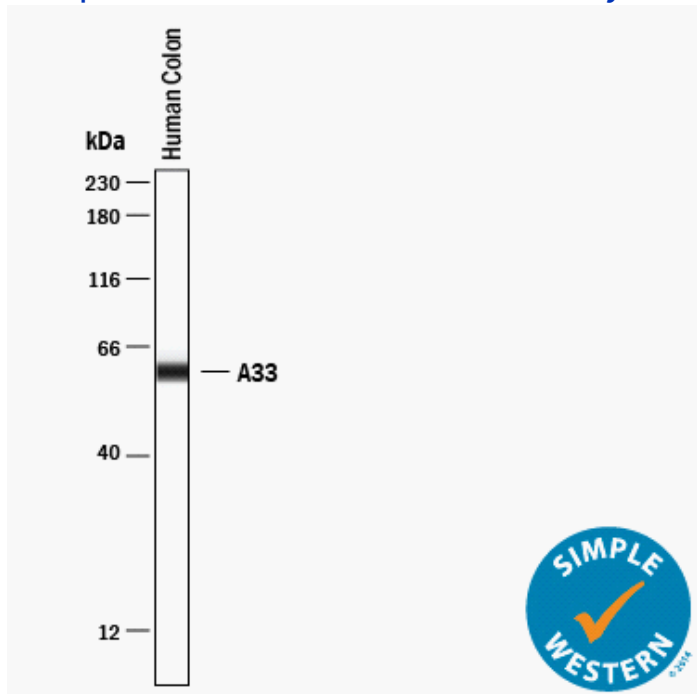


Simple Western Certified Antibody Datasheet



Simple Western™ lane view shows lysates of Human Colon, loaded at 0.2 mg/mL. A specific band was detected for A33 at approximately 40 kDa (as indicated) using 50 µg/mL of Rabbit Anti-Human A33 Monoclonal Antibody (Catalog # MAB30803). This experiment was conducted under reducing conditions using the 12–230 kDa Separation Module.

**Antibody**

<b>Target</b>	A33
<b>Host</b>	Rabbit
<b>Clonality</b>	Monoclonal
<b>Type</b>	Primary

**Assay**

<b>Antibody Dilution</b>	1:50
<b>Separation</b>	Size
<b>Matrix</b>	12–230 kDa
<b>Observed kDa</b>	40
<b>Sample Concentration</b>	0.2 mg/mL
<b>Sample Type</b>	Human Colon

For additional information on this antibody [view antibody link](#).

This antibody is certified for Simple Western™ technology. To learn about Simple Western technology, available antibodies, or to submit new antibodies, visit the links below. For additional information, please contact [support@proteinsimple.com](mailto:support@proteinsimple.com).

[Simple Western Systems](#)

[Simple Western Antibody Database](#)

[Antibody Validation Submission](#)