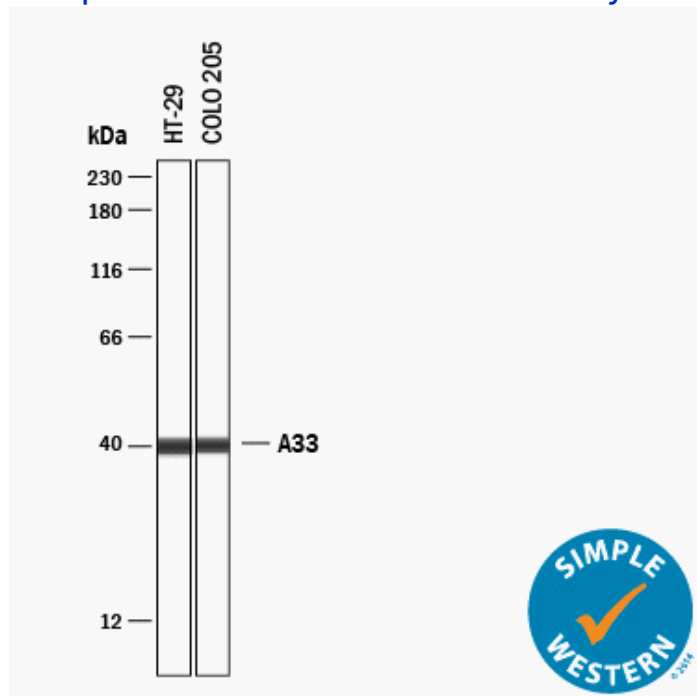


Simple Western Certified Antibody Datasheet



Simple Western™ lane view shows lysates of HT-29, COLO 205, loaded at 0.2 mg/mL. A specific band was detected for A33 at approximately 40 kDa (as indicated) using 50 µg/mL of Mouse Anti-Human A33 Monoclonal Antibody (Catalog # MAB30802). This experiment was conducted under reducing conditions using the 12–230 kDa Separation Module.

Antibody

Target	A33
Host	Mouse
Clonality	Monoclonal
Type	Primary

Assay

Antibody Dilution	1:50
Separation	Size
Matrix	12–230 kDa
Observed kDa	40
Sample Concentration	0.2 mg/mL
Sample Type	HT-29, COLO 205

For additional information on this antibody [view antibody link](#).

This antibody is certified for Simple Western™ technology. To learn about Simple Western technology, available antibodies, or to submit new antibodies, visit the links below. For additional information, please contact support@proteinsimple.com.

[Simple Western Systems](#)

[Simple Western Antibody Database](#)

[Antibody Validation Submission](#)