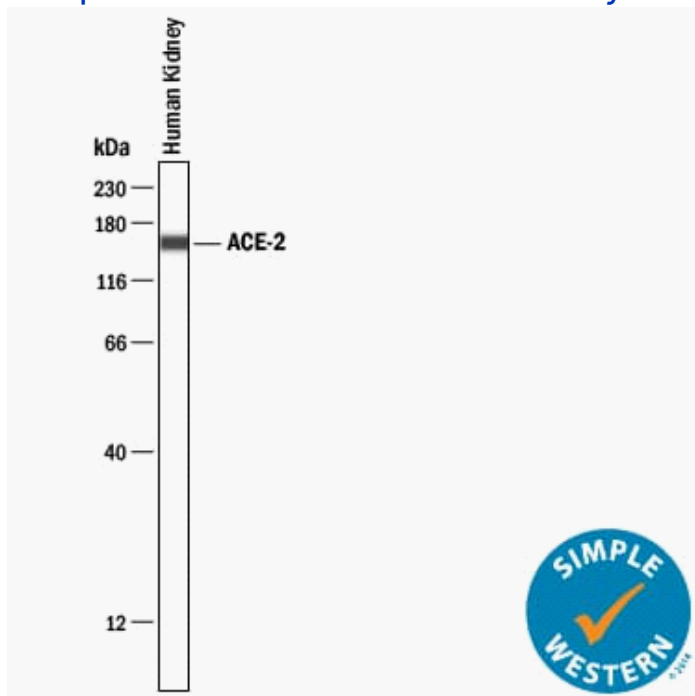


Simple Western Certified Antibody Datasheet



Simple Western™ lane view shows lysates of human kidney, loaded at 0.2 mg/mL. A specific band was detected for ACE-2 at approximately 153 kDa (as indicated) using 20 µg/mL of Mouse Anti-Human ACE-2 Monoclonal Antibody (Catalog # MAB10821) . This experiment was conducted under reducing conditions and using the 12–230 kDa Separation Module.

**Antibody**

|                  |            |
|------------------|------------|
| <b>Target</b>    | ACE-2      |
| <b>Host</b>      | Mouse      |
| <b>Clonality</b> | Monoclonal |
| <b>Type</b>      | Primary    |

**Assay**

|                             |              |
|-----------------------------|--------------|
| <b>Antibody Dilution</b>    | 20 µg/mL     |
| <b>Separation</b>           | Size         |
| <b>Matrix</b>               | 12–230 kDa   |
| <b>Observed kDa</b>         |              |
| <b>Sample Concentration</b> | 0.2 mg/mL    |
| <b>Sample Type</b>          | Human kidney |

For additional information on this antibody [view antibody link](#).

This antibody is certified for Simple Western™ technology. To learn about Simple Western technology, available antibodies, or to submit new antibodies, visit the links below. For additional information, please contact [support@proteinsimple.com](mailto:support@proteinsimple.com).

[Simple Western Systems](#)

[Simple Western Antibody Database](#)

[Antibody Validation Submission](#)