

## DESCRIPTION

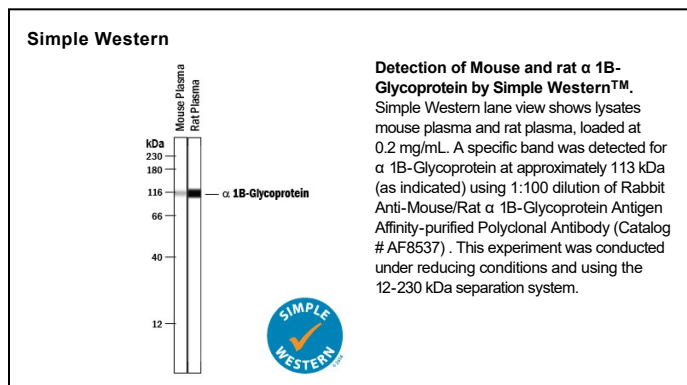
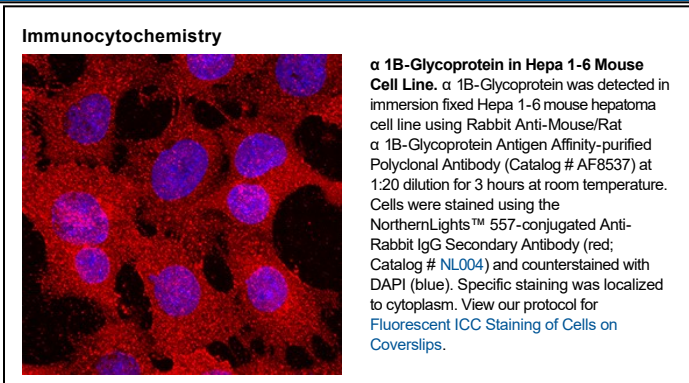
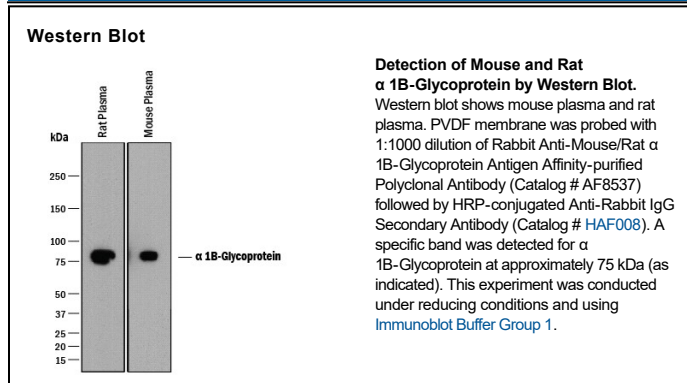
<b>Species Reactivity</b>	Mouse/Rat
<b>Specificity</b>	Detects mouse and rat $\alpha$ 1B-Glycoprotein in direct ELISAs and Western blots. In direct ELISAs, less than 1% cross-reactivity with recombinant human $\alpha$ 1B-Glycoprotein observed.
<b>Source</b>	Polyclonal Rabbit IgG
<b>Purification</b>	Antigen Affinity-purified
<b>Immunogen</b>	Mouse myeloma cell line NS0-derived recombinant mouse $\alpha$ 1B-Glycoprotein Leu21-Gly512 Accession # Q19LI2
<b>Formulation</b>	Supplied as a solution in PBS containing BSA, Glycerol and Sodium Azide. See Certificate of Analysis for details. *Small pack size (-SP) is supplied either lyophilized or as a 0.2 $\mu$ m filtered solution in PBS.

## APPLICATIONS

**Please Note:** Optimal dilutions should be determined by each laboratory for each application. *General Protocols* are available in the *Technical Information* section on our website.

	Recommended Concentration	Sample
<b>Western Blot</b>	1:1000 dilution	See Below
<b>Immunocytochemistry</b>	1:20-1:50 dilution	See Below
<b>Simple Western</b>	1:100 dilution	See Below

## DATA



## PREPARATION AND STORAGE

<b>Shipping</b>	The product is shipped with polar packs. Upon receipt, store it immediately at the temperature recommended below. *Small pack size (-SP) is shipped with polar packs. Upon receipt, store it immediately at -20 to -70 °C
<b>Stability &amp; Storage</b>	<b>Use a manual defrost freezer and avoid repeated freeze-thaw cycles.</b> <ul style="list-style-type: none"> <li>• 12 months from date of receipt, -20 to -70 °C, as supplied.</li> <li>• 1 month, 2 to 8 °C under sterile conditions after opening.</li> <li>• 6 months, -20 to -70 °C under sterile conditions after opening.</li> </ul>

## BACKGROUND

The  $\alpha$  1B-Glycoprotein is a plasma glycoprotein, encoded by the A1BG gene with an unknown function. The protein shows sequence similarity to the variable regions of some immunoglobulin supergene family member proteins.

**PRODUCT SPECIFIC NOTICES**

\* Contains <0.1% Sodium Azide, which is not hazardous at this concentration according to GHS classifications. Refer to SDS for additional information and handling instructions.