

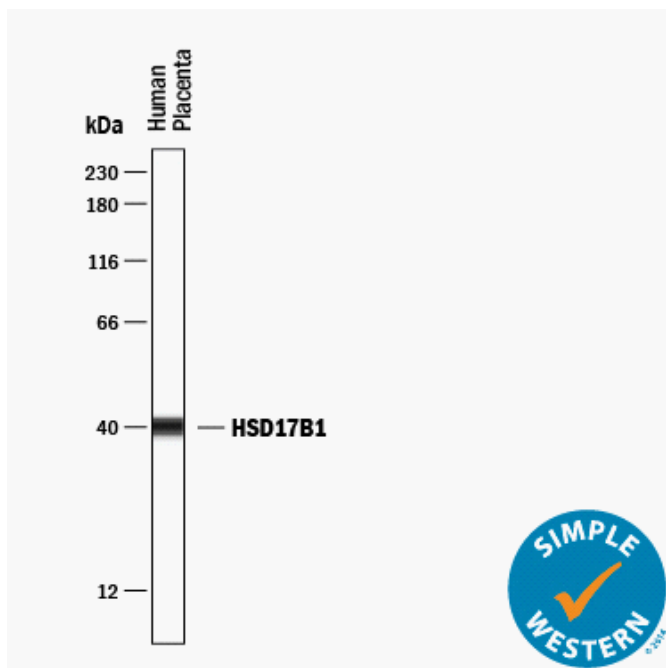
## Simple Western Certified Antibody Datasheet

### HSD17B1

Vendor: R&D Systems

Catalog #: AF7178

[View Antibody Link](#)



Simple Western™ lane view shows lysates of human placenta, loaded at 0.2 mg/mL. A specific band was detected for 17  $\beta$ HSD1/HSD17B1 at approximately 40 kDa (as indicated) using 2.5  $\mu$ g/mL of Sheep Anti-Human 17  $\beta$ HSD1/HSD17B1 Antigen Affinity-purified Polyclonal Antibody (Catalog # AF7178) followed by 1:50 dilution of HRP-conjugated Anti-Sheep IgG Secondary Antibody (Catalog # HAF016). This experiment was conducted under reducing conditions using the 12–230 kDa Separation Module.

### Antibody

Target:	HSD17B1
Host:	Sheep
Clonality:	Polyclonal
Type:	Primary

### Assay

Antibody Dilution:	2.5 $\mu$ g/mL
Separation:	Size
Matrix:	12–230 kDa
Observed kDa:	40
Sample Concentration:	0.2 mg/mL
Sample Type:	Human placenta

## Citations (0)

For additional information on this antibody [view antibody link](#).

This antibody is certified for Simple Western™ technology. Visit the links below to learn about Simple Western technology, find validated antibodies, or submit new antibody validation data.

[Simple Western Systems](#)

[Simple Western Antibody Database](#)

[Submit Antibody Validation Data](#)

**R&Dsystems** by **biotechne**

For Research Use or Manufacturing Purposes Only.

R&D Systems™ and Bio-Techne® are trademarks or registered trademarks of Bio-Techne Corporation and affiliated entities. All other trademarks, service marks, and trade names are the property of their respective owners. Any use of third-party names, logos, or marks does not imply affiliation, sponsorship, or endorsement. © 2026 Bio-Techne.