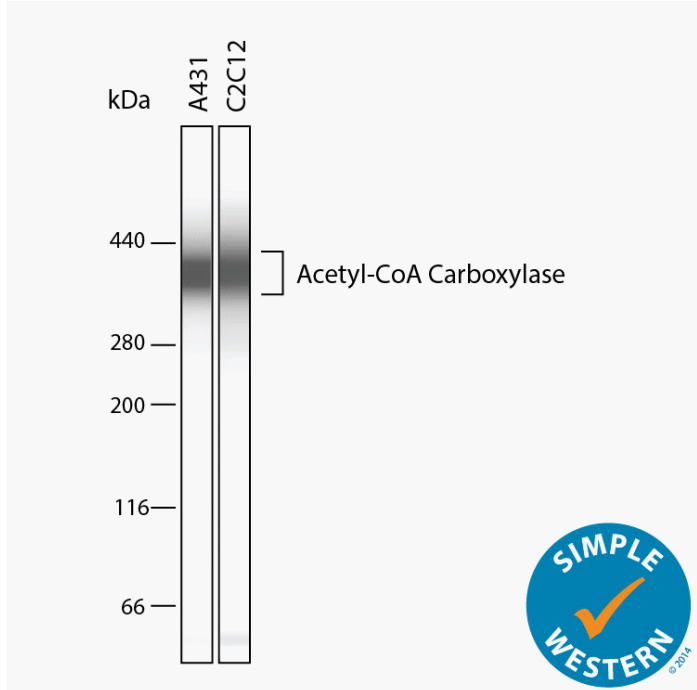


Simple Western Certified Antibody Datasheet



Simple Western™ lane view shows lysates of A431 human epithelial carcinoma cells and C2C12 mouse myoblast cells, loaded at 0.2 mg/mL. A specific band was detected for AcetylCoA Carboxylase α /ACACA at approximately 380-400 kDa (as indicated) using 20 μ g/mL of Sheep Anti-Human/Mouse/Rat AcetylCoA Carboxylase α /ACACA Antigen Affinity-purified Polyclonal Antibody (Catalog # AF6898) followed by 1:50 dilution of HRP-conjugated Anti-Sheep IgG Secondary Antibody (Catalog# HAF016). This experiment was conducted under reducing conditions using the 66-440 kDa Separation Module.

Antibody

Target	Acetyl-CoA Carboxylase
Host	Sheep
Clonality	Polyclonal
Type	Primary

Assay

Antibody Dilution	1:20
Separation	Size
Matrix	66-440 kDa
Observed kDa	380-400
Sample Concentration	0.2 mg/mL
Sample Type	A431 human epithelial carcinoma cells and C2C12 mouse myoblast cells

For additional information on this antibody [view antibody link](#).

This antibody is certified for Simple Western™ technology. To learn about Simple Western technology, available antibodies, or to submit new antibodies, visit the links below. For additional information, please contact support@proteinsimple.com.

[Simple Western Systems](#)

[Simple Western Antibody Database](#)

[Antibody Validation Submission](#)