

SIMPLE WESTERN VALIDATED ANTIBODY DATASHEET

[View
Antibody Link](#)

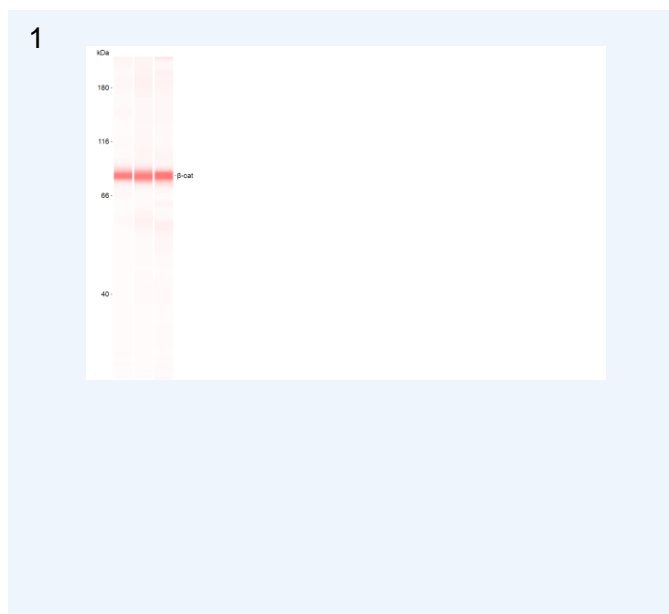


Figure 1: Simple Western Lane view shows β-catenin antibody at 1:25, 1:100, 1:400 dilution in HL60 Cell Lysates at 2.0 mg/mL using 12 - 230 kDa separation system . Customer submitted data.

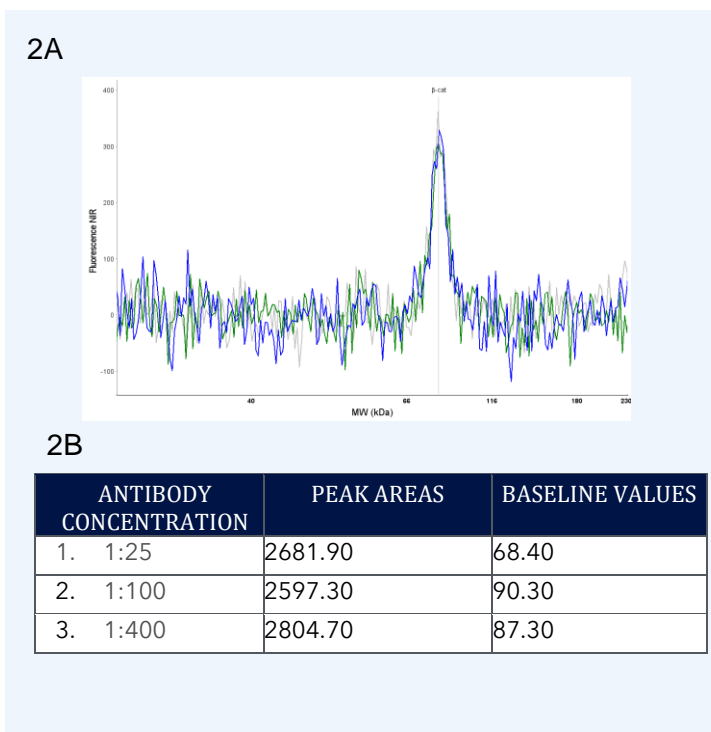


Figure 2A: Simple Western Electropherogram of β-catenin antibody was used at 1:25, 1:100, 1:400 dilution in HL60 Cell Lysates at 2.0 mg/mL. Customer submitted data.

Figure 2B: Table range of antibody concentrations tested and peak areas and baseline values. Customer submitted data.

PROTEIN TARGET/ANTIBODY	
Protein Target	β -catenin
Protein Isoform	
Antibody Type	Primary
Host Species/Clonality	Rabbit Monoclonal
ASSAY	
Sample Type	HL60 Cell Lysates
Sample Concentration	0.125-2 mg/mL
Antibody Concentration	1:25 ; 1:100; 1:400
Antibody Diluent	
Detection Mode	Fluorescence
Separation Type	Size
Matrix	12 - 230 kDa
Observed kDa	85

PUBLICATIONS	

This antibody is validated for Gel-Free, Blot Free, Hands Free Simple Western Systems. To learn about Simple Western Systems, available Simple Western antibodies, or new antibody submissions visit the links below. For additional information, please contact support@proteinsimple.com.

[Simple Western Systems](#)

[Simple Western Antibody Database](#)

[Simple Western Antibody Submission](#)