

## SIMPLE WESTERN CERTIFIED ANTIBODY DATASHEET

[View Antibody Link](#)

1

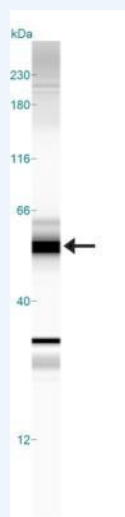


Figure 1: beta-Arrestin 2 Antibody [NBP2-24569] - Simple Western lane view shows a specific band for beta Arrestin in 0.5 mg/mL of Jurkat lysate. This experiment was performed under reducing conditions using the 12-230 kDa separation system.

2

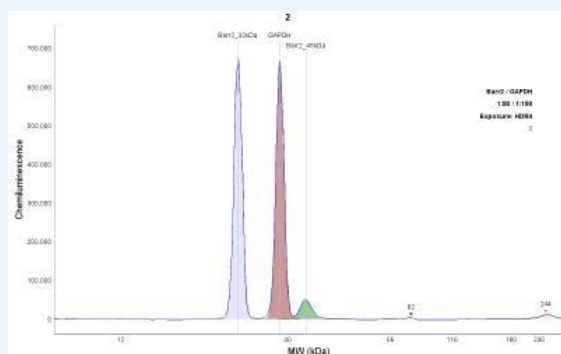


Figure 2: beta-Arrestin 2 Antibody [NBP2-24569] - Beta-arrestin antibody detects 2 peaks at 32 and 45 kDa using Simple Western. Traditional size of beta-arrestin 2 is ~55 kDa. Image from verified customer review.

PROTEIN TARGET/ANTIBODY	
Protein Target	Beta arrestin
Protein Isoform	Beta arrestin
Antibody Type	Primary
Host Species/Clonality	Rabbit polyclonal
ASSAY	
Sample Type	Jurkat lysate 0.5 mg/ml
Sample Concentration	0.5 mg/ml
Antibody Concentration	1:100
Antibody Diluent	
Detection Mode	Chemiluminescence
Separation Type	Size
Matrix	12-230 kDa
Observed kDa	54

PUBLICATIONS
None Listed

This antibody is validated for Gel-Free, Blot Free, Hands Free Simple Western Systems. To learn about Simple Western Systems, available Simple Western antibodies, or new antibody submissions visit the links below. For additional information, please contact [support@proteinsimple.com](mailto:support@proteinsimple.com).

[Simple Western Systems](#)

[Simple Western Antibody Database](#)

[Simple Western Antibody Submission](#)