

SIMPLE WESTERN CERTIFIED ANTIBODY DATASHEET

[View Antibody Link](#)



Figure 1: beta-Actin Antibody [NB600-503] - Simple Western lane view shows a specific band for Beta Actin in 0.1 mg/ml of HeLa lysate. This experiment was performed under reducing conditions using the 12-230 kDa separation system.

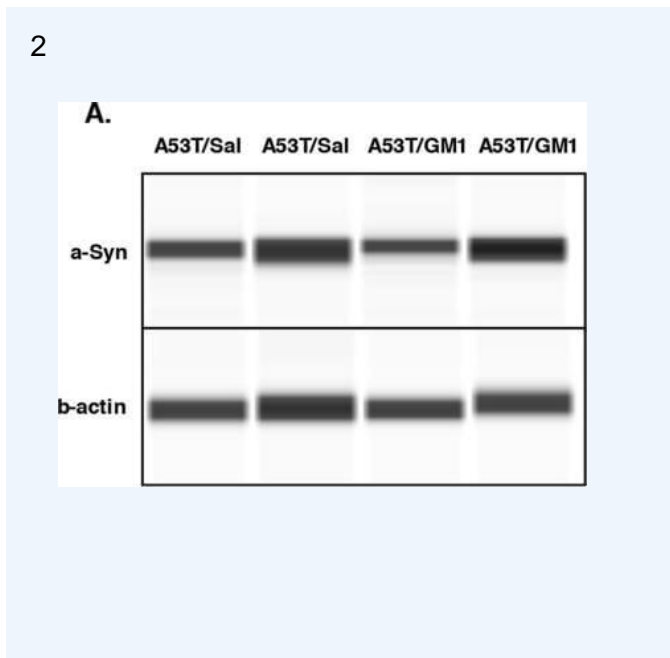


Figure 2: beta-Actin Antibody [NB600-503] - Early start GM1 administration did not affect alpha-synuclein expression or transport to the striatum. When assessed 1 week following AAV-A53T alpha-synuclein injection, levels of striatal alpha-synuclein were no different

PROTEIN TARGET/ANTIBODY	
Protein Target	Beta actin
Protein Isoform	Beta actin
Antibody Type	Primary
Host Species/Clonality	Rabbit polyclonal
ASSAY	
Sample Type	HeLa lysate 0.1 mg/ml
Sample Concentration	0.1 mg/ml
Antibody Concentration	1:12.5
Antibody Diluent	
Detection Mode	Chemiluminescence
Separation Type	Size
Matrix	12-230 kDa
Observed kDa	50

PUBLICATIONS
None Listed

This antibody is validated for Gel-Free, Blot Free, Hands Free Simple Western Systems. To learn about Simple Western Systems, available Simple Western antibodies, or new antibody submissions visit the links below. For additional information, please contact support@proteinsimple.com.

[Simple Western Systems](#)

[Simple Western Antibody Database](#)

[Simple Western Antibody Submission](#)