

SIMPLE WESTERN CERTIFIED ANTIBODY DATASHEET

[View
Antibody Link](#)

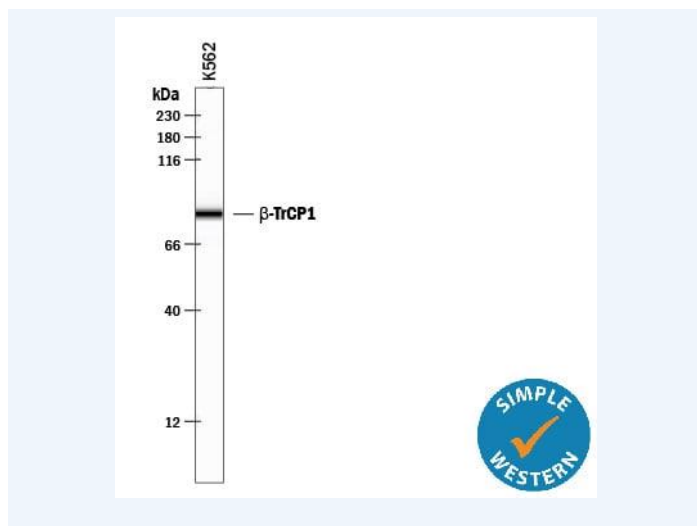


Figure1 Simple Western lane view shows lysates of K562 human chronic myelogenous leukemia cell line, loaded at 0.5 mg/mL. A specific band was detected for β -TrCP1/BTRC at approximately 84 kDa (as indicated) using 10 μ g/mL of Mouse Anti-Human β -TrCP1/BTRC Monoclonal Antibody (Catalog # MAB7675). This experiment was conducted under reducing conditions and using the 12-230 kDa separation system.

PROTEIN TARGET/ANTIBODY	
Protein Target	Beta-TrCP1/BTRC
Protein Isoform	beta-TrCP1/BTRC
Antibody Type	Primary
Host Species/Clonality	Mouse Monoclonal
ASSAY	
Sample Type	K562 human chronic myelogenous leukemia cell line
Sample Concentration	0.5 mg/mL
Antibody Concentration/Dilution	10 μ g/mL
Antibody Diluent	
Detection Mode	Chemiluminescence
Separation Type	Size
Matrix	12-230 kDa
Observed kDa	84
Publications	None listed

This antibody is certified for Gel-Free, Blot Free, Hands Free Simple Western Systems. To learn about Simple Western Systems, available Simple Western antibodies, or new antibody submissions visit the links below. For additional information, please contact support@proteinsimple.com.

[Simple Western Systems](#)

[Simple Western Antibody Database](#)

[Simple Western Antibody Submission](#)