

## SIMPLE WESTERN CERTIFIED ANTIBODY DATASHEET

[...View  
Antibody Link](#)

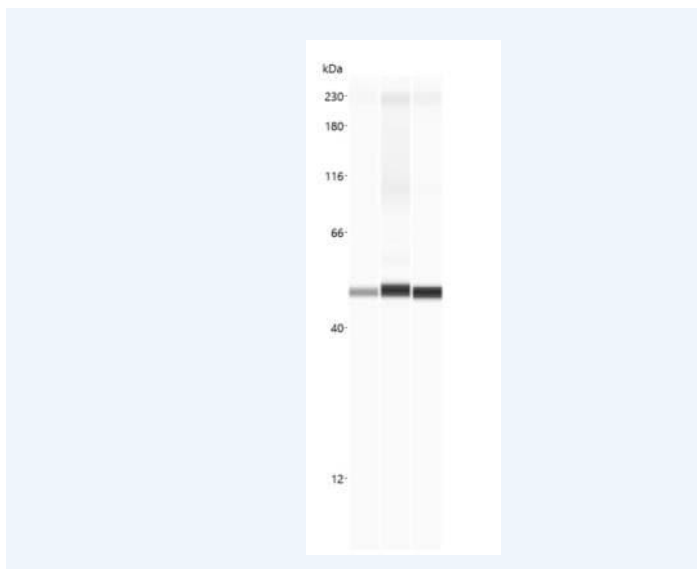


Figure1 Simple Western: beta-Actin Antibody [NB600-532] - Simple Western lane view shows a specific band for Beta Actin using NB600-532 at 1:200 in A431, C2C12 and C6 cell lysates. This experiment was performed under reducing conditions using the 12-230 kDa separation system.

PROTEIN TARGET/ANTIBODY	
Protein Target	Beta-Actin
Protein Isoform	Beta-Actin
Antibody Type	Primary
Host Species/Clonality	Rabbit Polyclonal
ASSAY	
Sample Type	Titrated to saturation using various models
Sample Concentration	
Antibody Concentration/Dilution	1:200
Antibody Diluent	
Detection Mode	Chemiluminescence
Separation Type	Size
Matrix	12-230 kDa
Observed kDa	
Publications	None listed

This antibody is validated for Gel-Free, Blot Free, Hands Free Simple Western Systems. To learn about Simple Western Systems, available Simple Western antibodies, or new antibody submissions visit the links below. For additional information, please contact [support@proteinsimple.com](mailto:support@proteinsimple.com).

[Simple Western Systems](#)

[Simple Western Antibody Database](#)

[Simple Western Antibody Submission](#)