

SIMPLE WESTERN CERTIFIED ANTIBODY DATASHEET

[...View
Antibody Link](#)

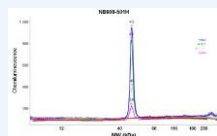


Figure1 Simple Western: beta-Actin Antibody (AC-15) [HRP] [NB600-501H] - Electropherogram image(s) of corresponding Simple Western lane view. Beta-Actin antibody was used at 1:500 dilution on Hela, MCF-7, SH-SY5Y, & Jurkat lysate(s).

PROTEIN TARGET/ANTIBODY	
Protein Target	Beta-Actin
Protein Isoform	Beta-Actin
Antibody Type	Primary
Host Species/Clonality	Mouse Monoclonal
ASSAY	
Sample Type	Hela, MCF-7, SH-SY5Y, & Jurkat lysates
Sample Concentration	
Antibody Concentration/Dilution	1:500
Antibody Diluent	
Detection Mode	Chemiluminescence
Separation Type	Size
Matrix	12 - 230 kDa
Observed kDa	49 kDa
Publications	None listed

This antibody is validated for Gel-Free, Blot Free, Hands Free Simple Western Systems. To learn about Simple Western Systems, available Simple Western antibodies, or new antibody submissions visit the links below. For additional information, please contact support@proteinsimple.com.

[Simple Western Systems](#)

[Simple Western Antibody Database](#)

[Simple Western Antibody Submission](#)