

SIMPLE WESTERN CERTIFIED ANTIBODY DATASHEET

[View
Antibody Link](#)

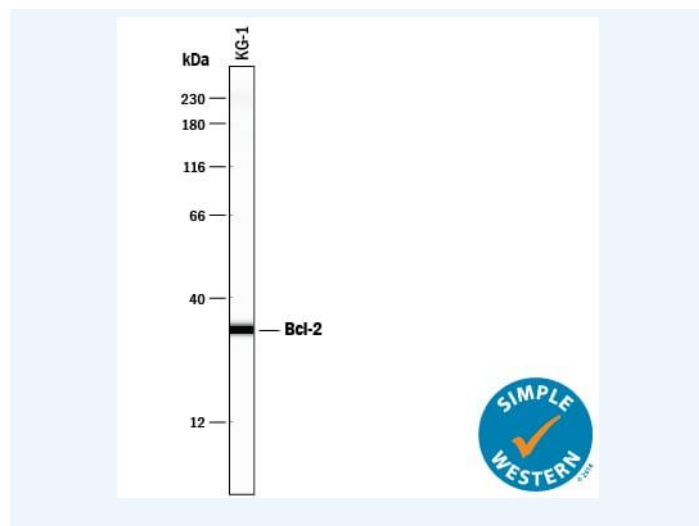


Figure1 Simple Western lane view shows lysates of KG-1 human acute myelogenous leukemia cell line, loaded at 0.2 mg/mL. A specific band was detected for Bcl-2 at approximately 33 kDa (as indicated) using 50 µg/mL of Goat Anti-Human/Mouse Bcl-2 Antigen Affinity-purified Polyclonal Antibody (Catalog # AF810) followed by 1:50 dilution of HRP-conjugated Anti-Goat IgG Secondary Antibody (Catalog # HAF109). This experiment was conducted under reducing conditions and using the 12-230 kDa separation system.

PROTEIN TARGET/ANTIBODY	
Protein Target	BCL-2
Protein Isoform	BCL-2
Antibody Type	Primary
Host Species/Clonality	Goat Polyclonal
ASSAY	
Sample Type	KG-1 human acute myelogenous leukemia cell line
Sample Concentration	0.2 mg/mL
Antibody Concentration/Dilution	50 µg/mL
Antibody Diluent	
Detection Mode	Chemiluminescence
Separation Type	Size
Matrix	12-230 kDa
Observed kDa	33 kDa
Publications	None listed

This antibody is certified for Gel-Free, Blot Free, Hands Free Simple Western Systems. To learn about Simple Western Systems, available Simple Western antibodies, or new antibody submissions visit the links below. For additional information, please contact support@proteinsimple.com.

[Simple Western Systems](#)

[Simple Western Antibody Database](#)

[Simple Western Antibody Submission](#)