

SIMPLE WESTERN CERTIFIED ANTIBODY DATASHEET

[View
Antibody Link](#)

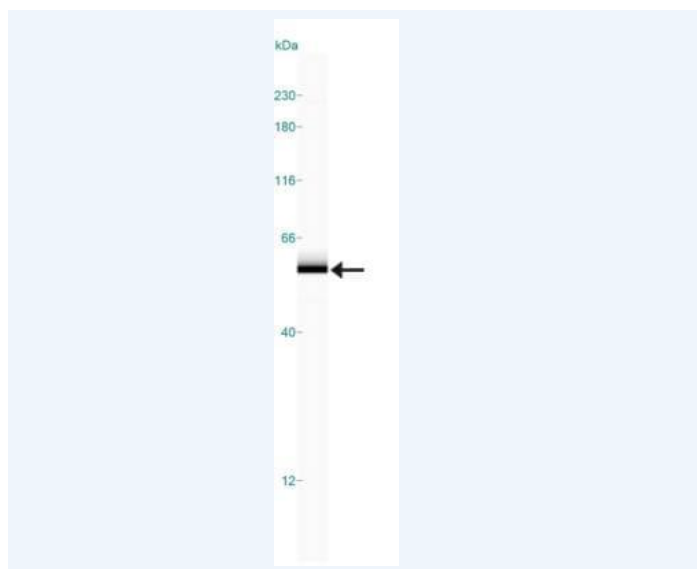


Figure1 Simple Western: BCAS1 Antibody [NB100-681] - Simple Western lane view shows a specific band for BCAS1 in 0.05 mg/ml of MCF-7 lysate. This experiment was performed under reducing conditions using the 12-230 kDa separation system.

PROTEIN TARGET/ANTIBODY	
Protein Target	BCAS1
Protein Isoform	BCAS1
Antibody Type	Primary
Host Species/Clonality	Rabbit Polyclonal
ASSAY	
Sample Type	MCF-7 lysate 0.05 mg/ml
Sample Concentration	0.05 mg/ml
Antibody Concentration/Dilution	1:5000
Antibody Diluent	
Detection Mode	Chemiluminescence
Separation Type	Size
Matrix	12-230 kDa
Observed kDa	57
Publications	None listed

This antibody is validated for Gel-Free, Blot Free, Hands Free Simple Western Systems. To learn about Simple Western Systems, available Simple Western antibodies, or new antibody submissions visit the links below. For additional information, please contact support@proteinsimple.com.

[Simple Western Systems](#)

[Simple Western Antibody Database](#)

[Simple Western Antibody Submission](#)