

## SIMPLE WESTERN CERTIFIED ANTIBODY DATASHEET

[View Antibody Link](#)

1

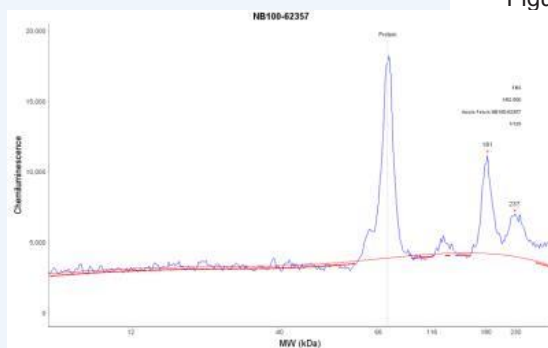


Figure 1: Asialofetuin Antibody [NB100-62357] - Electropherogram of corresponding Simple Western lane view. Asialofetuin antibody was used at 1:125 dilution on fetal Bovine serum.

2

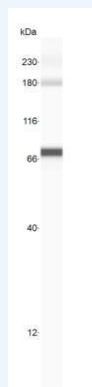


Figure 2: Asialofetuin Antibody [NB100-62357] - Simple Western lane view shows a specific band for Asialofetuin of fetal Bovine serum. This experiment was performed under reducing conditions using the 12-230 kDa separation system.

PROTEIN TARGET/ANTIBODY	
Protein Target	Asialofetuin
Protein Isoform	Asialofetuin Antibody
Antibody Type	Primary
Host Species/Clonality	Sheep Polyclonal
ASSAY	
Sample Type	Fetal Bovine serum
Sample Concentration	
Antibody Concentration	1:125
Antibody Diluent	
Detection Mode	Chemiluminescence
Separation Type	Size
Matrix	12-230 kDa
Observed kDa	

PUBLICATIONS
None Listed

This antibody is validated for Gel-Free, Blot Free, Hands Free Simple Western Systems. To learn about Simple Western Systems, available Simple Western antibodies, or new antibody submissions visit the links below. For additional information, please contact [support@proteinsimple.com](mailto:support@proteinsimple.com).

[Simple Western Systems](#)

[Simple Western Antibody Database](#)

[Simple Western Antibody Submission](#)