

SIMPLE WESTERN CERTIFIED ANTIBODY DATASHEET

[View Antibody Link](#)

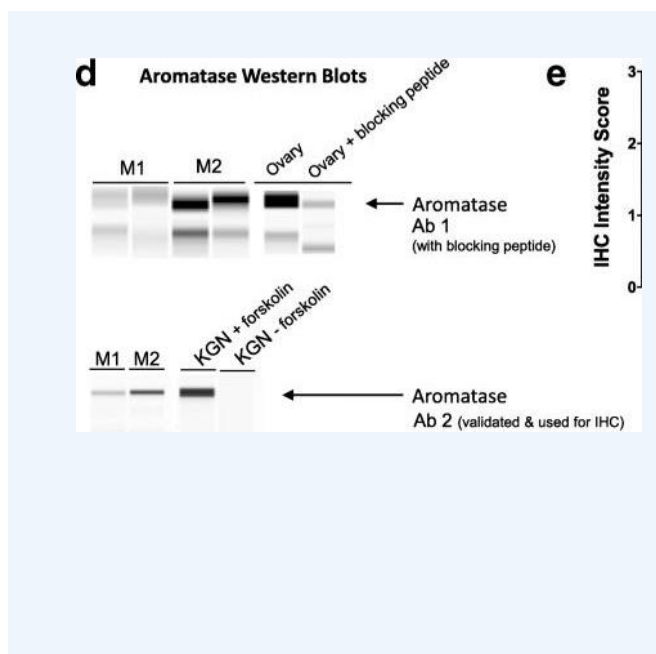


Figure: Metformin decreases aromatase-positive, tumor-associated macrophages. a Quantification of aromatase-positive cells and b CD68-positive (CD68+) macrophages costaining for aromatase in the tumor border of tissues from control or metformin-treated rats. c Representative control and metformin-treated IHC images of CD68 and aromatase dual staining in tissue bordering mammary tumors (T) (arrows: yellow = CD68+aromatase+, brown = CD68+ scale bar = 50um). d Aromatase expression by Western blotting (WES system) from in vitro activated M1 and M2 rat macrophages using two different primary antibodies (Ab #1: Novus NB100-1596 Ab #2: clone 677, Baylor College of Medicine). Controls include ovary (positive control) and ovary in which the primary antibody was preincubated with an aromatase blocking peptide for 1 h, as well as KGN cells with (positive control) and without (negative control) forskolin treatment. e IHC intensity score for ER and PR (0 = no stain 1 = weak 2 = moderate 3 = strong staining). *p < 0.05

PROTEIN TARGET/ANTIBODY	
Protein Target	Aromatase
Protein Isoform	Unmodified
Antibody Type	Primary
Host Species/Clonality	Rabbit Polyclonal
ASSAY	
Sample Type	Blood,Bone marrow,Ovaries
Sample Concentration	Not_Stated
Antibody Concentration/Dilution	1:50
Antibody Diluent	
Detection Mode	Chemiluminescence
Separation Type	Size
Matrix	Not_Stated
Observed kDa	Not_Stated

*Image collected and cropped by CiteAb from the following publication <https://dx.plos.org/10.1371/journal.pone.0230375> licensed under a CC-BY license

PUBLICATIONS

1. Giles, E. D., Jindal, S., et al. Metformin inhibits stromal aromatase expression and tumor progression in a rodent model of postmenopausal breast cancer. Breast Cancer Res. 2018 Jun 14;20(1):50. 10.1186/S13058-018-0974-2. PMID:29898754.
- 2.
- 3.
- 4.
- 5.
- 6.

This antibody is validated for Gel-Free, Blot Free, Hands Free Simple Western Systems. To learn about Simple Western Systems, available Simple Western antibodies, or new antibody submissions visit the links below. For additional information, please contact support@proteinsimple.com.

[Simple Western Systems](#)

[Simple Western Antibody Database](#)

[Simple Western Antibody Submission](#)

PAGE 2/2

bio-technne[®]

bio-technne.com

Global info@bio-technne.com bio-technne.com/find-us/distributors TEL +1 612 379 2956
North America TEL 800 343 7475 **Europe | Middle East | Africa** TEL +44 (0)1235 529449
China info.cn@bio-technne.com TEL +86 (21) 52380373

Trademarks and registered trademarks are the property of their respective owners.