

SIMPLE WESTERN CERTIFIED ANTIBODY DATASHEET

[View
Antibody Link](#)

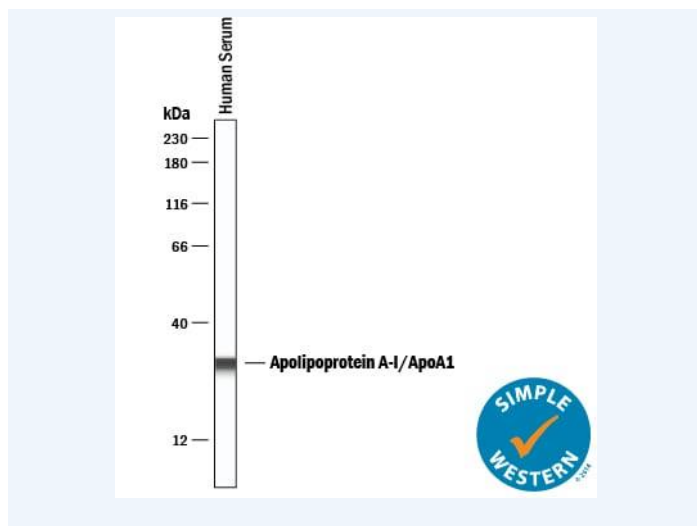


Figure1 Simple Western lane view shows lysates of human serum, loaded at 1:5000. A specific band was detected for Apolipoprotein A-I/ApoA1 at approximately 32 kDa (as indicated) using 5 µg/mL of Goat Anti-Human Apolipoprotein A-I/ApoA1 Antigen Affinity-purified Polyclonal Antibody (Catalog # AF3664) followed by 1:50 dilution of HRP-conjugated Anti-Goat IgG Secondary Antibody (Catalog # HAF109). This experiment was conducted under reducing conditions and using the 12-230 kDa separation system.

PROTEIN TARGET/ANTIBODY	
Protein Target	Apolipoprotein A-I/ApoA1
Protein Isoform	Apolipoprotein A-I/ApoA1
Antibody Type	Primary
Host Species/Clonality	Goat Polyclonal
ASSAY	
Sample Type	Human serum
Sample Concentration	1:5000
Antibody Concentration/Dilution	5 µg/mL
Antibody Diluent	
Detection Mode	Chemiluminescence
Separation Type	Size
Matrix	
Observed kDa	32 kDa
Publications	None listed

This antibody is certified for Gel-Free, Blot Free, Hands Free Simple Western Systems. To learn about Simple Western Systems, available Simple Western antibodies, or new antibody submissions visit the links below. For additional information, please contact support@proteinsimple.com.

[Simple Western Systems](#)

[Simple Western Antibody Database](#)

[Simple Western Antibody Submission](#)