

SIMPLE WESTERN CERTIFIED ANTIBODY DATASHEET

[View
Antibody Link](#)

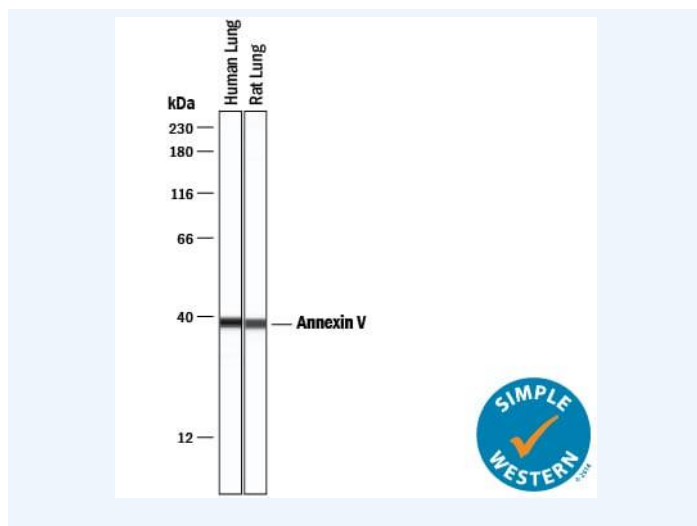


Figure1 Simple Western lane view shows lysates of human lung tissue and rat lung tissue, loaded at 0.2 mg/mL. A specific band was detected for Annexin V at approximately 39 kDa (as indicated) using 2.5 µg/mL of Mouse Anti-Human/Rat Annexin V Monoclonal Antibody (Catalog # MAB399) . This experiment was conducted under reducing conditions and using the 12-230 kDa separation system.

PROTEIN TARGET/ANTIBODY	
Protein Target	Annexin V
Protein Isoform	Annexin V
Antibody Type	Primary
Host Species/Clonality	Mouse Monoclonal
ASSAY	
Sample Type	Human lung tissue and rat lung tissue
Sample Concentration	0.2 mg/mL
Antibody Concentration/Dilution	2.5 µg/mL
Antibody Diluent	
Detection Mode	Chemiluminescence
Separation Type	Size
Matrix	12-230 kDa
Observed kDa	39 kDa
Publications	None listed

This antibody is certified for Gel-Free, Blot Free, Hands Free Simple Western Systems. To learn about Simple Western Systems, available Simple Western antibodies, or new antibody submissions visit the links below. For additional information, please contact support@proteinsimple.com.

[Simple Western Systems](#)

[Simple Western Antibody Database](#)

[Simple Western Antibody Submission](#)